



Montanaro Court, Coleman Fields, London, N1 7AD

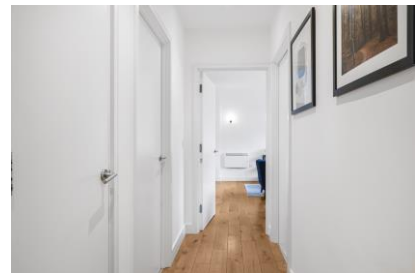
Asking Price: £640,000 Leasehold

Stylish and modern, this ground floor flat, with courtyard garden, is offered for sale with no onward chain in the heart of Islington.

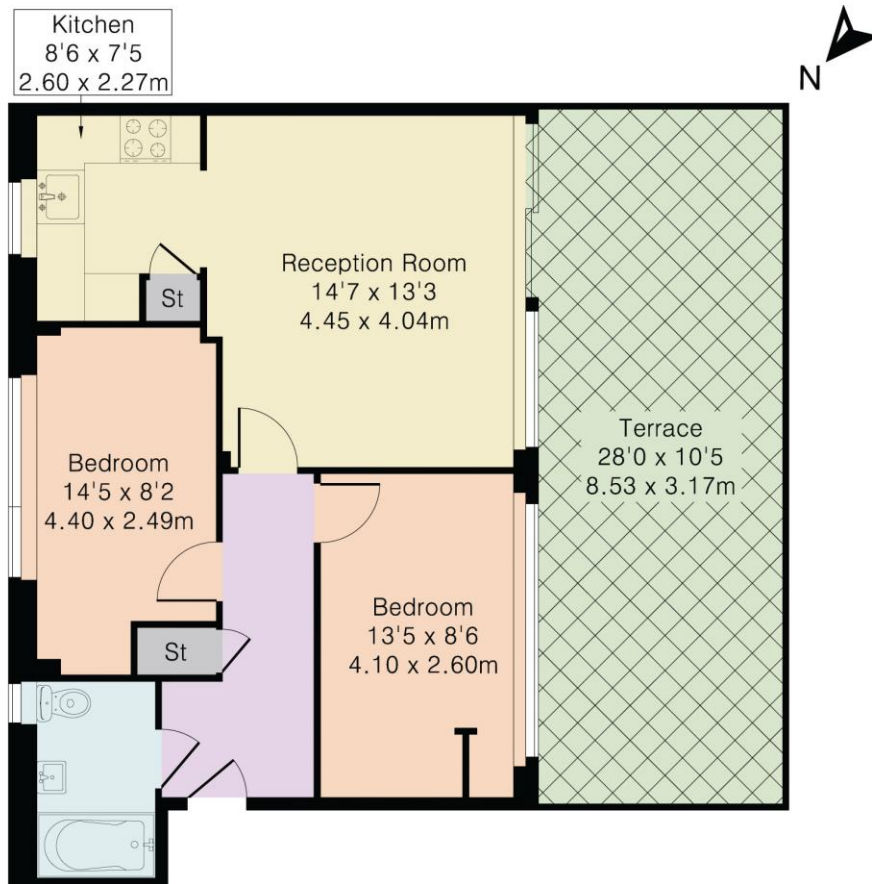
- Leasehold
- 2 Bedrooms
- 1 Reception Room
- 1 Bathroom



Montanaro Court, Coleman Fields, London, N1 7AD



Approximate Gross Internal Area 612 sq ft – 57 sq m



Ground Floor Flat

Whilst every attempt has been made to ensure the accuracy of the floor plans contained here, measurements of doors, windows and rooms are approximate and no responsibility is taken for any error, omission or mis-statement. These plans are for representation purposes only as defined by RICS Code of Measuring Practice and should be used as such by any prospective purchaser. The services, systems and appliances listed in this specification have not been tested and no guarantee as to their operating ability or their efficiency can be given.

