



Coleman Fields, Islington, London, N1 7AD

Asking Price: £675,000 Leasehold

2 Bedrooms | 1 Reception Room | 2 Bathrooms

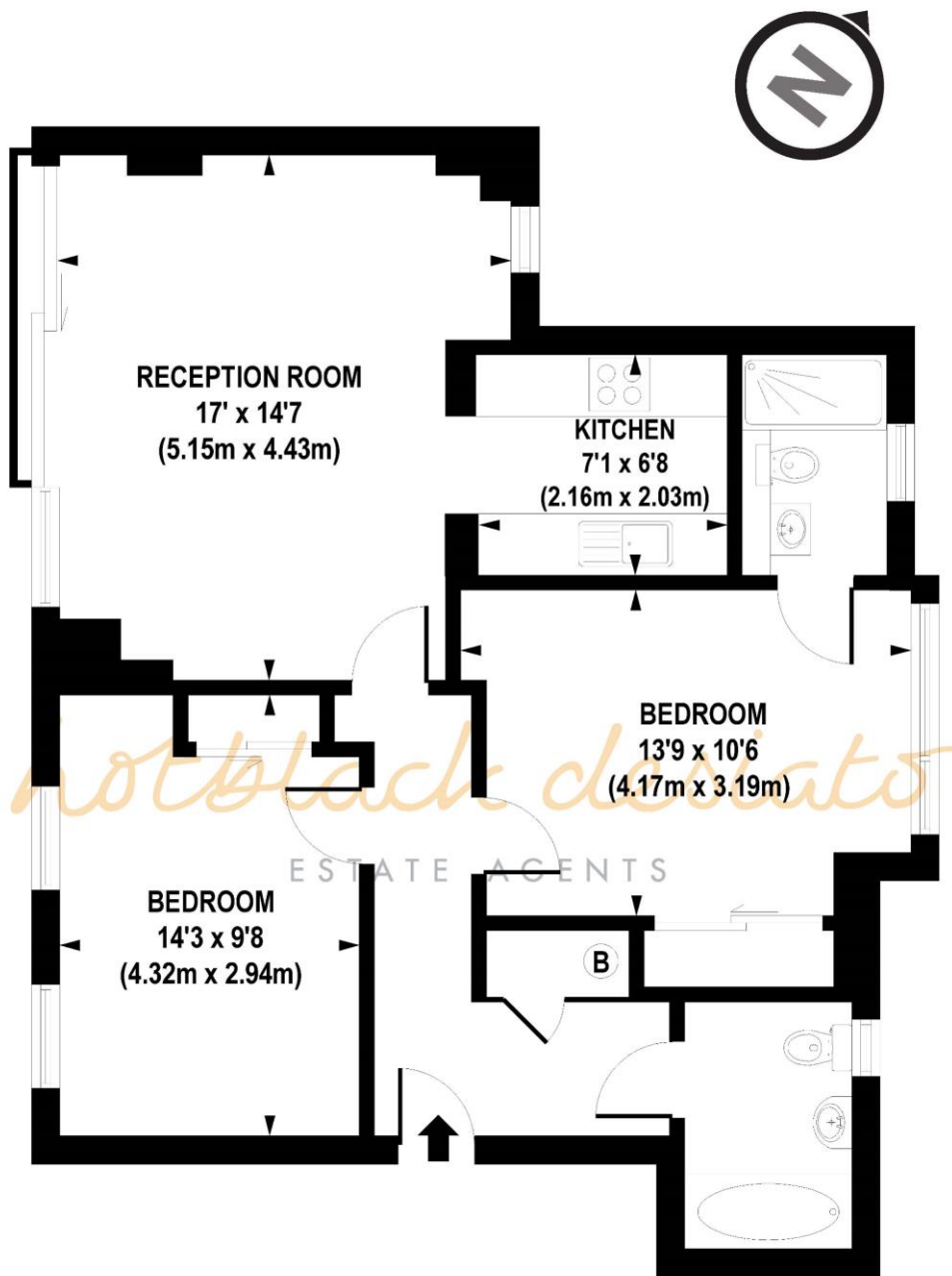
Stylish and modern, this first floor flat is offered for sale with no onward chain in the heart of Islington.

- Stunning modern apartment featuring chic, polished concrete, full height windows and high ceilings
- Fantastic Arlington Square location, quiet yet close to Angel & Shoreditch Park
- Great access to Old St, Northern Line via Angel and Overground at Essex Road
- Long leasehold, EPC – C, service charge £1500 pa



Coleman Fields, Islington, London, N1 7AD





FIRST FLOOR

APPROX. GROSS INTERNAL FLOOR AREA 782 sq. ft / 72.67 sq. m

Floorplan is for illustrative purposes only and is not to scale.
 Every attempt has been made to ensure the accuracy of the floorplan shown, however all measurements, fixtures, fittings and data shown are an approximate interpretation for illustrative purposes only.
 Liability for errors, omissions or mis-statement through negligence or otherwise is hereby excluded.

Whilst every attempt has been made to ensure the accuracy of the floor plans contained here, measurements of doors, windows and rooms are approximate and no responsibility is taken for any error, omission or mis-statement. These plans are for representation purposes only as defined by RICS Code of Measuring Practice and should be used as such by any prospective purchaser. The services, systems and appliances listed in this specification have not been tested and no guarantee as to their operating ability or their efficiency can be given.

