



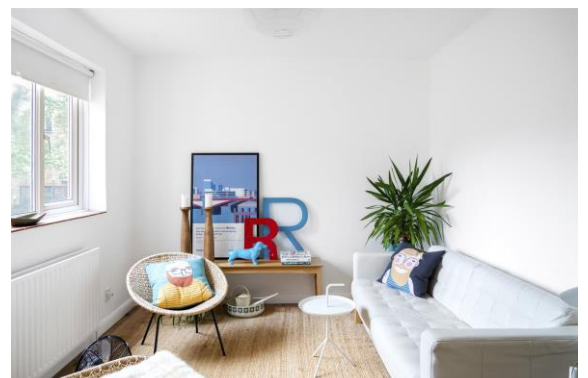
Ashurst Lodge, Highbury London, N5 1HN

Asking Price: £415,000 SoFH

1 Bedroom | 1 Reception | 1 Bathroom

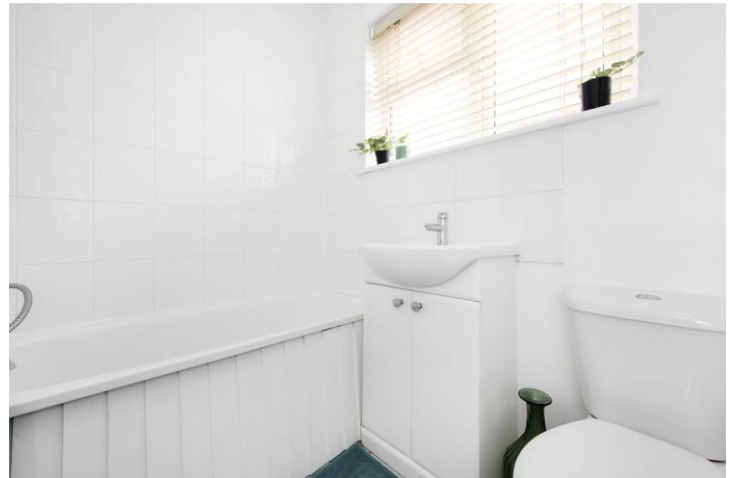
A smart, practical mid-century modern one bedroom flat in a private block with sensible service charges, immaculate communal areas a stone's throw from Highbury Fields, Upper St and Highbury & Islington station.

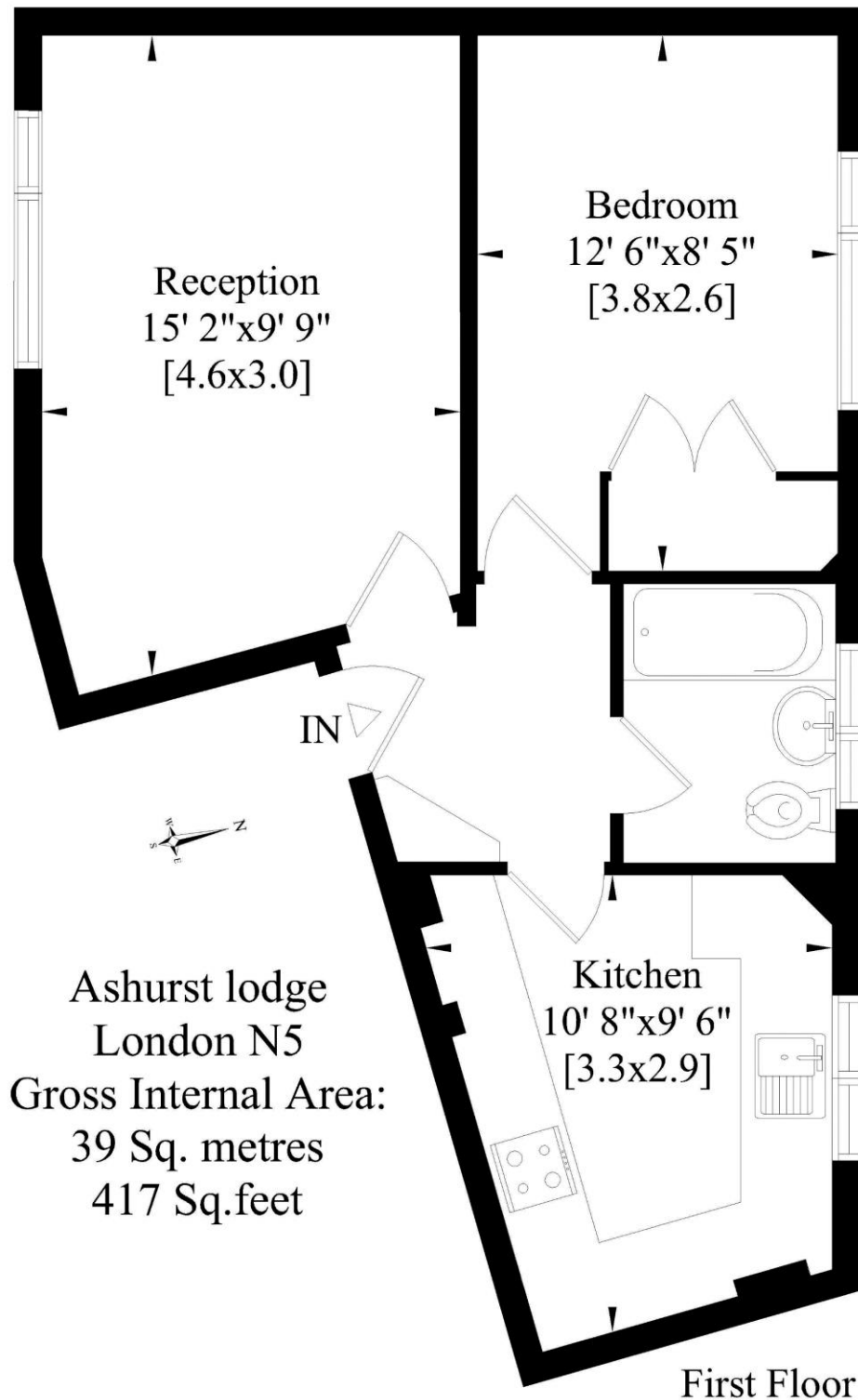
- Bright, well proportioned first floor flat in small, private block
- Great location on prime Highbury street leading to Highbury Fields 2 minutes away
- Safe, quick access to Upper Street and Highbury and Islington station for Victoria, National Rail and Overground lines



10 Ashurst Lodge, 145 Highbury Grove, Highbury, London, N5

A brilliant first floor one bedroom apartment in a quiet, private, purpose built block two minutes' walk from Highbury Fields and five minutes from Upper Street shops and restaurants and Highbury and Islington tube.





Whilst every attempt has been made to ensure the accuracy of this floor plan, measurements of doors, windows, rooms and Sq. footage are approximate within 5% accuracy. For identification purposes only. Walls with small angles drawn straight. Not to be used as part of the decision to buy. You must recheck all details before purchase and only purchase when you have confirmed them. Price on application for a 90 day licence to use this plan. No appliances tested. Not to scale. © www.steele.london - Email: patricia@steele.london - Tel: 07847 219401

Whilst every attempt has been made to ensure the accuracy of the floor plans contained here, measurements of doors, windows and rooms are approximate and no responsibility is taken for any error, omission or mis-statement. These plans are for representation purposes only as defined by RICS Code of Measuring Practice and should be used as such by any prospective purchaser. The services, systems and appliances listed in this specification have not been tested and no guarantee as to their operating ability or their efficiency can be given.

