



Anglers Lane, NW5 3DD

Asking Price: £1,075,000

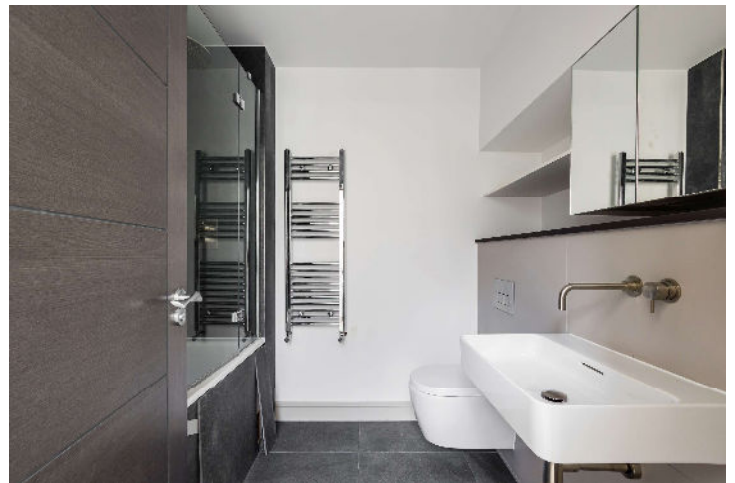
2 Bedrooms | 1 Reception Room

An impressive conversion of a 1930's built former school into a selection of 2 and 3 bedroom freehold townhouses. High ceilings, large windows and wooden floors combine to provide light, airy and well-proportioned accommodation. Only 3 houses remain available, each with a Guest WC, patio garden, high quality bathroom and well-equipped kitchen fitted with Bosch appliances.

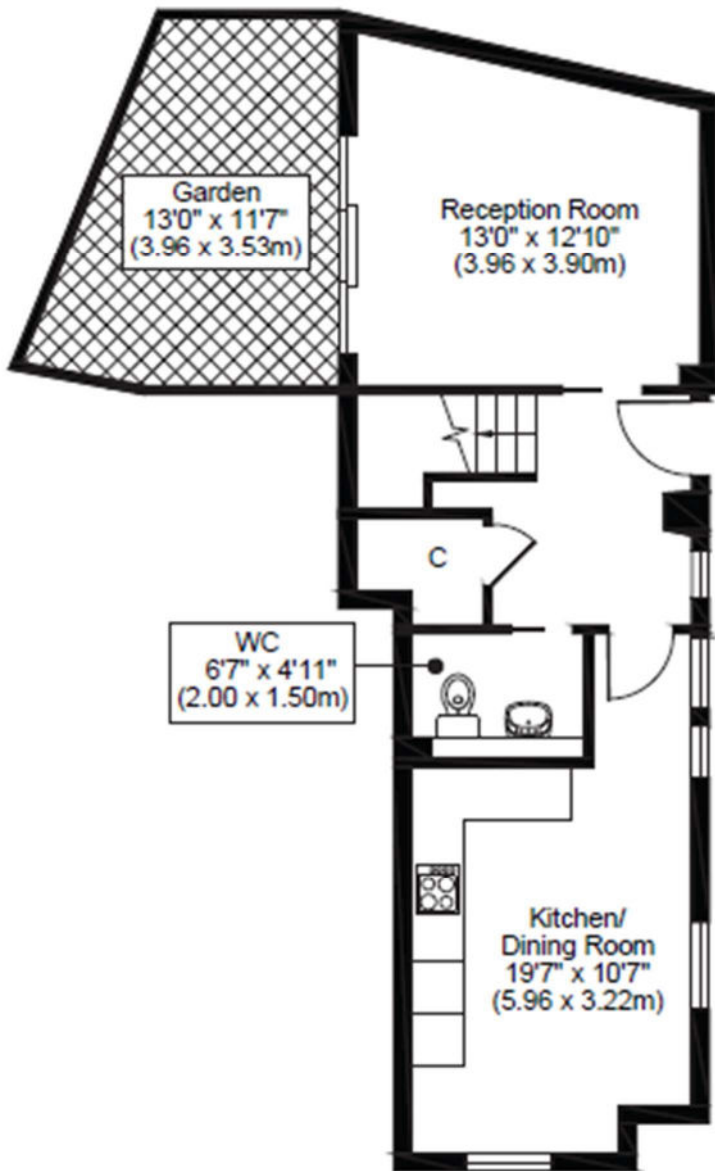
- 2 bedrooms
- Open plan kitchen
- Open plan reception/dining room
- Guest WC
- Wood floors
- Patio garden
- Quiet and desirable location
-

Anglers Lane, NW5 3DD

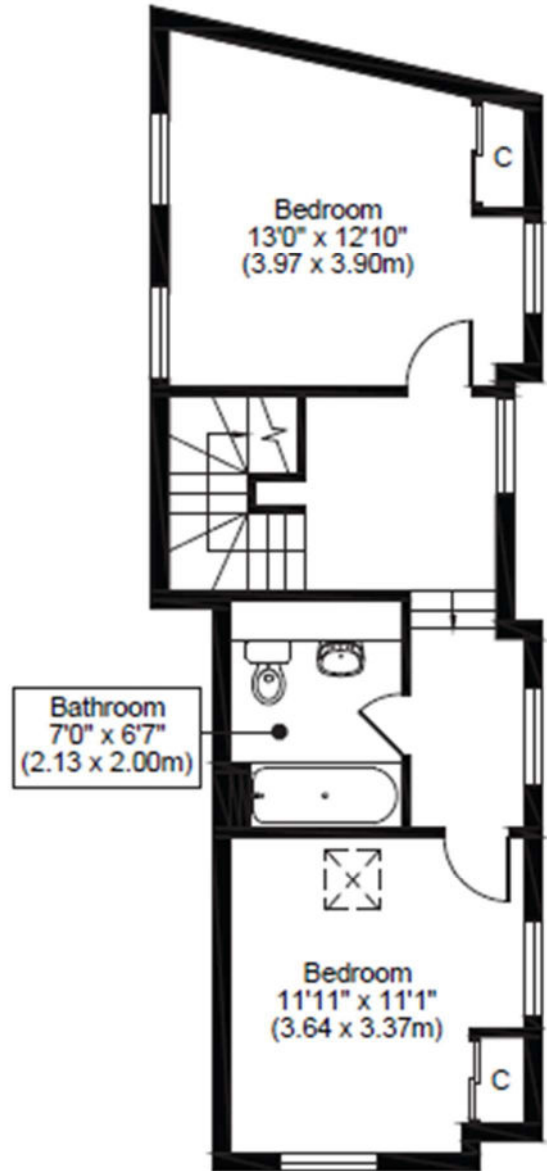
A quiet street of attractive Victorian terraced housing convenient for all modes of public transport and only a stone's throw from the hustle and bustle of Kentish Town Road which is lined with independent shops, cafes and restaurants together with many high street brands. The properties are being sold by an locally based award winning company and include a 10 year building warranty.



RAGLAN HOUSE, NW5
TOTAL APPROX FLOOR PLAN AREA 952 SQ.FT (88 SQ.M)



GROUND FLOOR

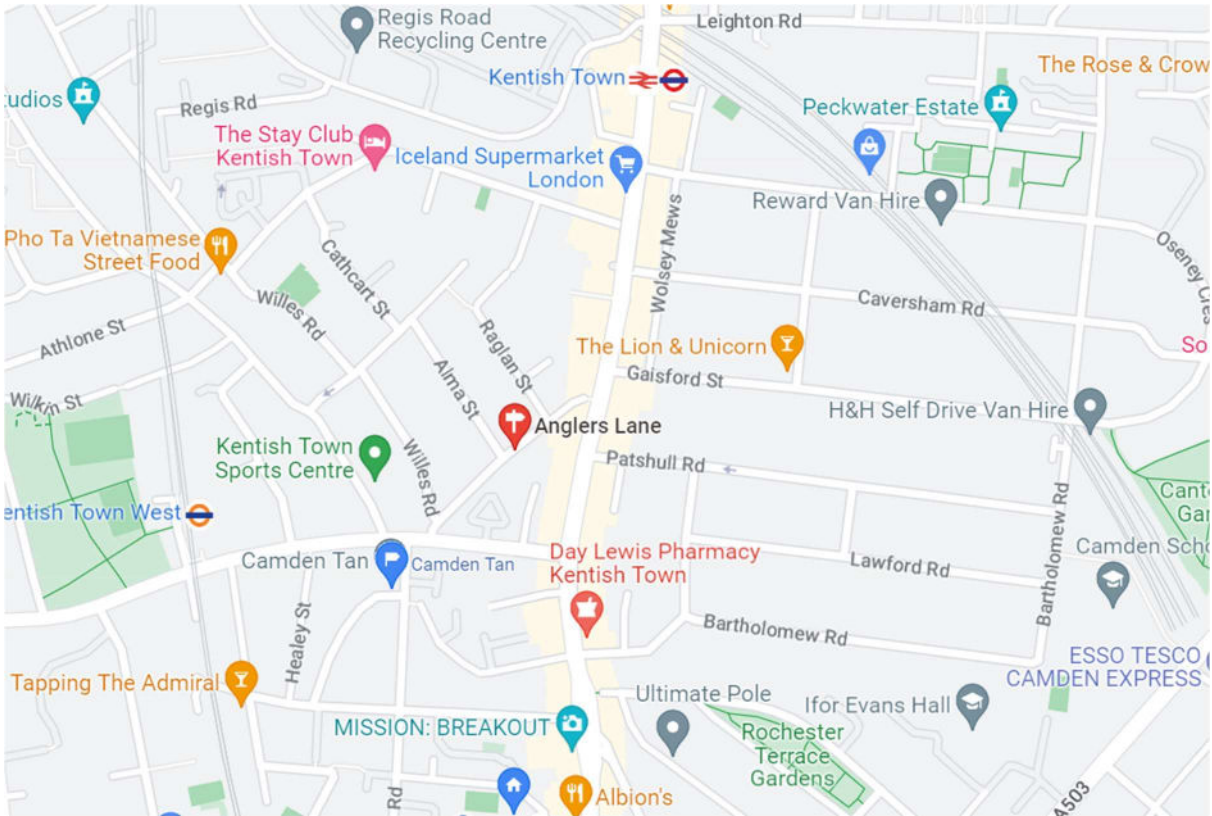


FIRST FLOOR

All measurements, walls, doors, windows, fittings and their appliances, their size and locations are shown conventionally and are approximate only and cannot be regarded as being a representation either by the seller or his agent.



Whilst every attempt has been made to ensure the accuracy of the floor plans contained here, measurements of doors, windows and rooms are approximate and no responsibility is taken for any error, omission or mis-statement. These plans are for representation purposes only as defined by RICS Code of Measuring Practice and should be used as such by any prospective purchaser. The services, systems and appliances listed in this specification have not been tested and no guarantee as to their operating ability or their efficiency can be given.



Score	Energy rating	Current	Potential
92+	A		
81-91	B		90 B
69-80	C	78 C	
55-68	D		
39-54	E		
21-38	F		
1-20	G		