



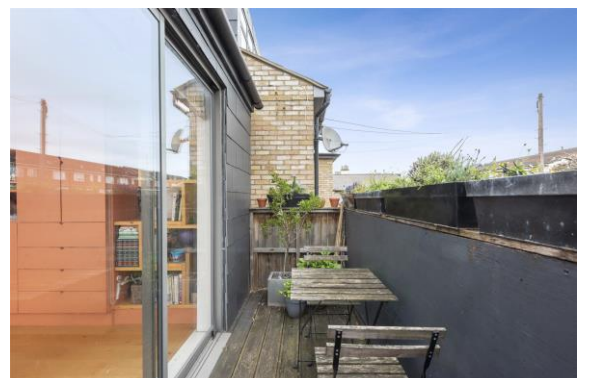
## Church Walk, London, N16 8QR

Asking Price: £725,000 Share of  
Freehold

**2 Bedrooms | 1 Reception Room | 2 Bathrooms**

Situated on a quiet street leading from Newington Green, this charming and peaceful dwelling enjoys tranquility whilst still being close to the action.

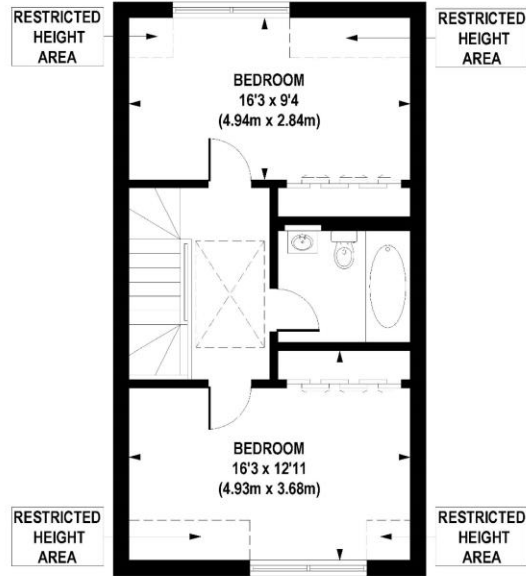
- Share of Freehold
- Service charge: % of outgoings
- Ground rent: n/a



## 33b Church Walk, London, N16 8QR

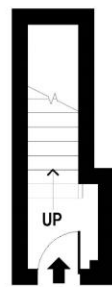
A bright, modern upper split level maisonette with balcony on a quiet street between Clissold Park and Newington Green



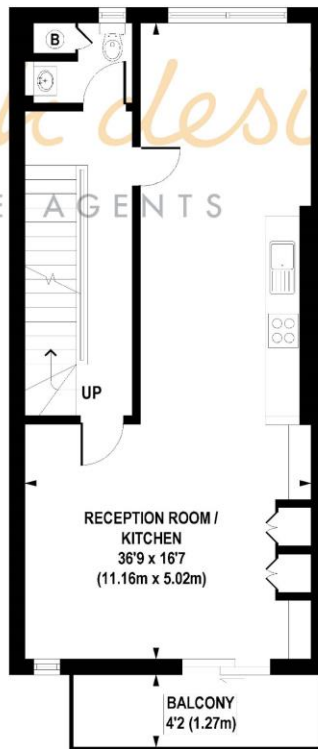


SECOND FLOOR  
GROSS INTERNAL  
FLOOR AREA 506 SQ FT

*hotblack desuato*  
ESTATE AGENTS



GROUND FLOOR  
GROSS INTERNAL  
FLOOR AREA 47 SQ FT



FIRST FLOOR  
GROSS INTERNAL  
FLOOR AREA 604 SQ FT

**APPROX. GROSS INTERNAL AREA FLOOR 1157 sq. ft / 107.48 sq. m (Including Restricted Height Area)**  
**APPROX. GROSS INTERNAL AREA FLOOR 1114 sq. ft / 103.45 sq. m (Excluding Restricted Height Area)**

Floorplan is for illustrative purposes only and is not to scale.  
Every attempt has been made to ensure the accuracy of the floorplan shown, however all measurements, fixtures, fittings and data shown are an approximate interpretation for illustrative purposes only.  
Liability for errors, omissions or mis-statement through negligence or otherwise is hereby excluded.

Whilst every attempt has been made to ensure the accuracy of the floor plans contained here, measurements of doors, windows and rooms are approximate and no responsibility is taken for any error, omission or mis-statement. These plans are for representation purposes only as defined by RICS Code of Measuring Practice and should be used as such by any prospective purchaser. The services, systems and appliances listed in this specification have not been tested and no guarantee as to their operating ability or their efficiency can be given.

