



## Highbury Park, London, N5 1TH

Offers Over: £900,000 Leasehold

**2 Total Bedrooms | 1 Reception Room | 1  
Bathroom**

Nestled in the heart of the Highbury conservation area, this split level period conversion boasts spacious and bright accommodation.

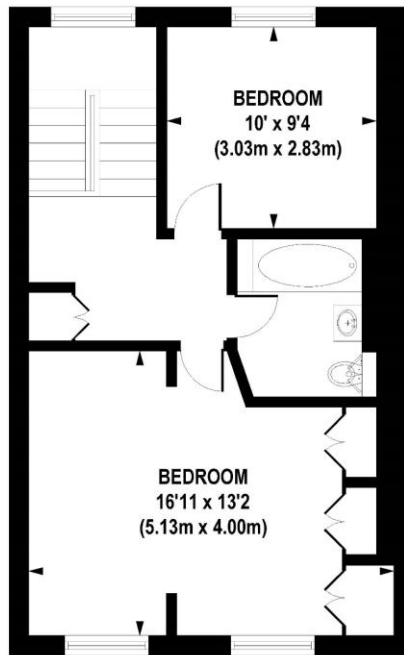
- Leasehold
- 2 Bedrooms
- 1 Reception Room
- 1 Bathroom



# Highbury Park, London, N5 1TH



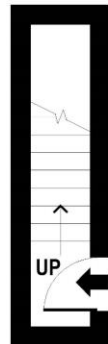




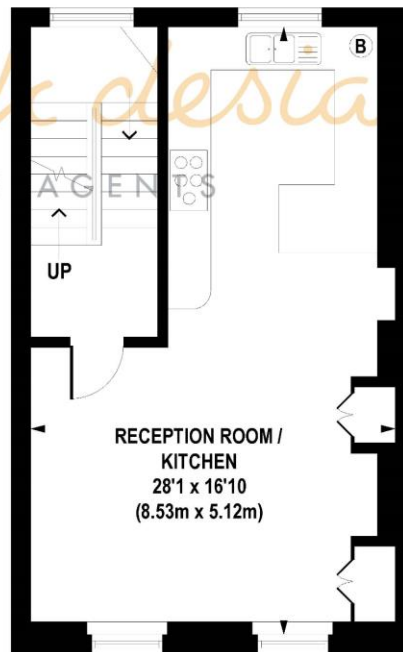
THIRD FLOOR  
GROSS INTERNAL  
FLOOR AREA 472 SQ FT

*hotblack estates*

ESTATE AGENTS



FIRST FLOOR  
GROSS INTERNAL  
FLOOR AREA 38 SQ FT



SECOND FLOOR  
GROSS INTERNAL  
FLOOR AREA 470 SQ FT

**APPROX. GROSS INTERNAL FLOOR AREA 980 sq. ft / 91.12 sq. m**

Floorplan is for illustrative purposes only and is not to scale.  
Every attempt has been made to ensure the accuracy of the floorplan shown, however all measurements, fixtures, fittings and data shown are an approximate interpretation for illustrative purposes only.  
Liability for errors, omissions or mis-statement through negligence or otherwise is hereby excluded.

Whilst every attempt has been made to ensure the accuracy of the floor plans contained here, measurements of doors, windows and rooms are approximate and no responsibility is taken for any error, omission or mis-statement. These plans are for representation purposes only as defined by RICS Code of Measuring Practice and should be used as such by any prospective purchaser. The services, systems and appliances listed in this specification have not been tested and no guarantee as to their operating ability or their efficiency can be given.

