



Highbury Hill, London, N5 1AP

Offers Over: £800,000 Share of
Freehold

**2 Total Bedrooms | 1 Reception Room | 1
Bathroom**

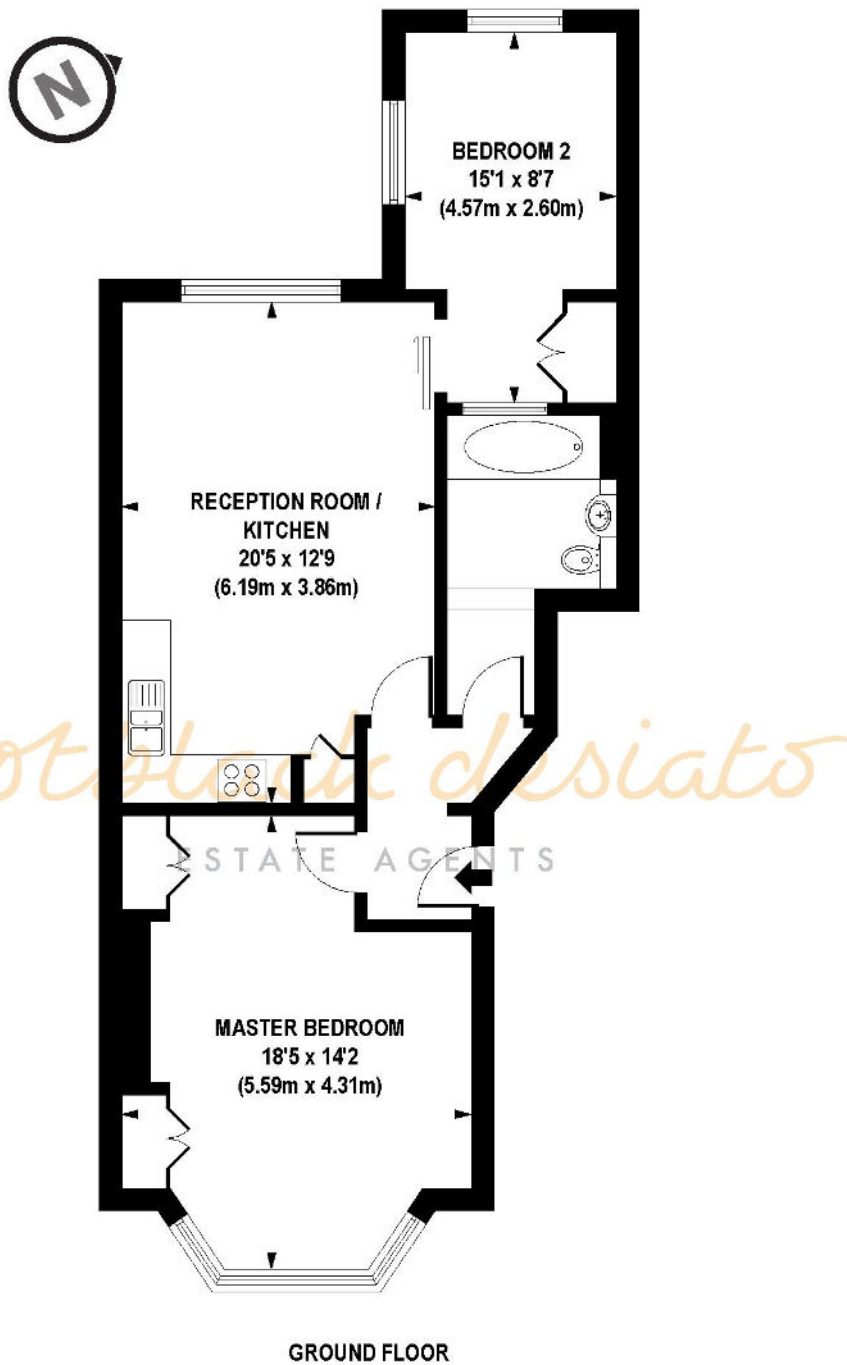
This lovely raised ground floor flat is on the popular upper section of Highbury Hill leading to the Barn and Fields. Presented thoughtfully and stylishly, this dwelling enjoys spacious rooms, wonderful high ceilings, bay windows and contemporary decor.

- Share of Freehold
- 2 Bedrooms
- 1 Reception Room



Highbury Hill, London, N5 1AP





APPROX. GROSS INTERNAL FLOOR AREA 713 sq. ft / 66.24 sq. m

Floorplan is for illustrative purposes only and is not to scale.
Every attempt has been made to ensure the accuracy of the floorplan shown, however all measurements, fixtures, fittings and data shown are an approximate interpretation for illustrative purposes only.
Liability for errors, omissions or mis-statement through negligence or otherwise is hereby excluded.

CP CREATIVE
PROPERTY MARKETING

Whilst every attempt has been made to ensure the accuracy of the floor plans contained here, measurements of doors, windows and rooms are approximate and no responsibility is taken for any error, omission or mis-statement. These plans are for representation purposes only as defined by RIICS Code of Measuring Practice and should be used as such by any prospective purchaser. The services, systems and appliances listed in this specification have not been tested and no guarantee as to their operating ability or their efficiency can be given.

