

# hotblack desiato

ESTATE AGENTS

RIVERSDALE ROAD, N5 2SU

£550,000



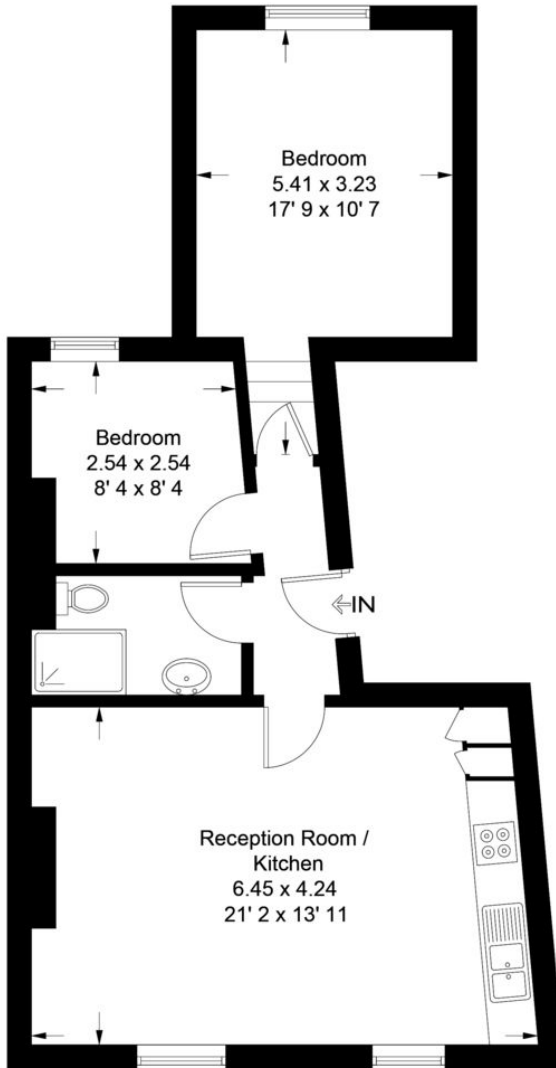
Stunning first floor apartment close to Clissold Park, Piccadilly, Victoria and Overground

- First Floor Apartment
- Two bedrooms
- Open plan living/ kitchen
- Bedroom
- Share of Freehold
- Service Charge: Shared costs
- Ground Rent: n/a
- Approx. Sq Ft: 596 sq ft



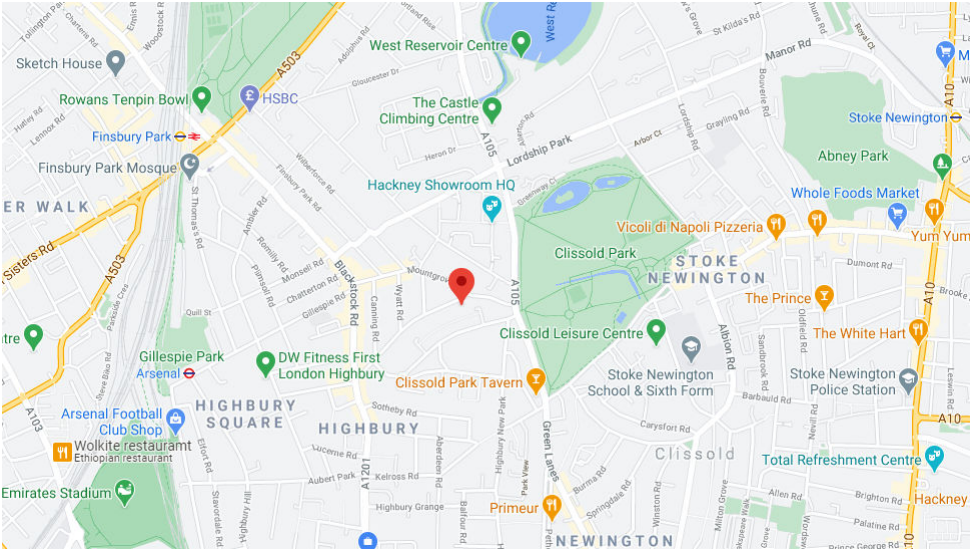
# Riversdale Road

Approximate Gross Internal Area = 596 sq ft / 55.4 sq m



**First Floor**

Not to scale, for guidance only and must not be relied upon as a statement of fact  
All measurements and areas are approximate only and have been prepared in  
accordance with the current edition of the RICS Code of Measuring Practice



**Islington Office**  
 314 Upper Street  
 London N1 2XQ

T 020 7226 0160  
 E [Islington.sales@hotblack.co.uk](mailto:Islington.sales@hotblack.co.uk)  
 E [Islington.lettings@hotblack.co.uk](mailto:Islington.lettings@hotblack.co.uk)

**Camden Office**  
 67 Parkway  
 London NW1 7PP

T 020 7482 2894  
 E [Camden.sales@hotblack.co.uk](mailto:Camden.sales@hotblack.co.uk)  
 E [Camden.lettings@hotblack.co.uk](mailto:Camden.lettings@hotblack.co.uk)

**Highbury Office**  
 2 Highbury Park  
 London N5 2AB

T 020 7288 9696  
 E [Highbury.sales@hotblack.co.uk](mailto:Highbury.sales@hotblack.co.uk)  
 E [Highbury.lettings@hotblack.co.uk](mailto:Highbury.lettings@hotblack.co.uk)

[WWW.HOTBLACKDESIATO.CO.UK](http://WWW.HOTBLACKDESIATO.CO.UK)

Hotblack Desiato Ltd wish to emphasise that:

1) these sales particulars do not constitute any part of an offer of contract, and are for the guidance of prospective purchasers only and should not be relied on as statements of fact, and

2) no representations are made in these particulars as to the property or as to whether any service or facilities are in good working order, and 3) all measurements are