

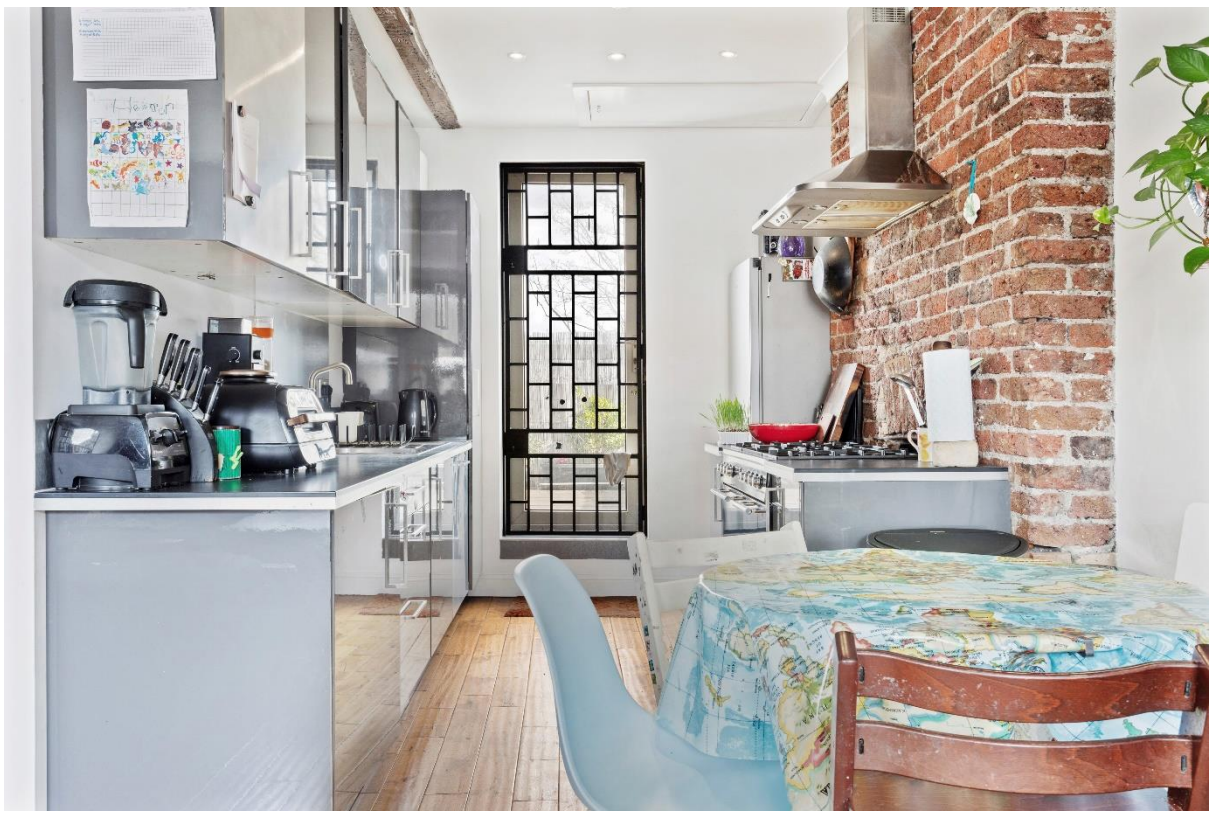


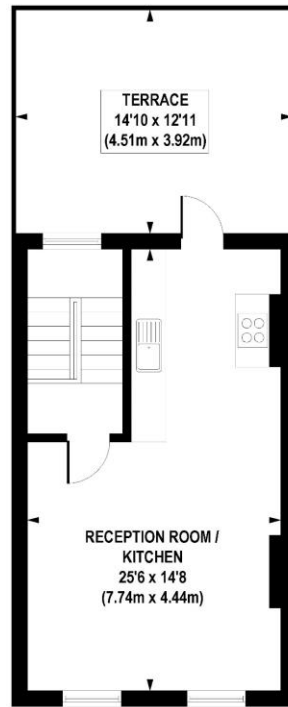
Highbury Park, N5 2AB

Asking Price: £900,000 Leasehold

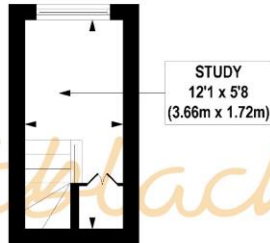
Nestled in the heart of the Highbury Barn, this split-level period conversion boasts spacious and bright accommodation. Standing at 1100 sq. ft. with your own private entrance on the ground floor, the property offers ample space with its own private roof terrace.

- Three Bedrooms
- Two Bathrooms
- Reception Room
- Private Roof Terrace
- Leasehold (986 years)
- Service Charge TBC
- Ground Rent TBC
- Approx 1,100 Sq Ft
- Council Tax Band D (Islington)

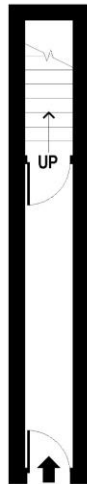




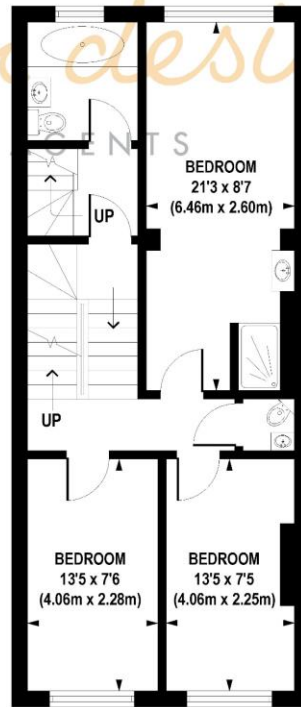
SECOND FLOOR
GROSS INTERNAL
FLOOR AREA 370 SQ FT



MEZZANINE
GROSS INTERNAL
FLOOR AREA 68 SQ FT



GROUND FLOOR
GROSS INTERNAL
FLOOR AREA 71 SQ FT



FIRST FLOOR
GROSS INTERNAL
FLOOR AREA 591 SQ FT

APPROX. GROSS INTERNAL FLOOR AREA 1100 sq. ft / 102.16 sq. m

Floorplan is for illustrative purposes only and is not to scale.
Every attempt has been made to ensure the accuracy of the floorplan shown, however all measurements, fixtures, fittings and data shown are an approximate interpretation for illustrative purposes only.
Liability for errors, omissions or mis-statement through negligence or otherwise is hereby excluded.

Whilst every attempt has been made to ensure the accuracy of the floor plans contained here, measurements of doors, windows and rooms are approximate and no responsibility is taken for any error, omission or mis-statement. These plans are for representation purposes only as defined by RICS Code of Measuring Practice and should be used as such by any prospective purchaser. The services, systems and appliances listed in this specification have not been tested and no guarantee as to their operating ability or their efficiency can be given.

