



Stock Orchard Crescent, Islington, London, N7 9SL

Offers Over: £450,000 Share of
Freehold

1 Bedroom | 1 Reception Room | 1 Bathroom

A bright and airy flat with balcony and direct access to garden, featuring a large double bedroom, high ceilings and exposed timber floorboards.

- Share of Freehold 81 years
- Service charge £1,000 pa

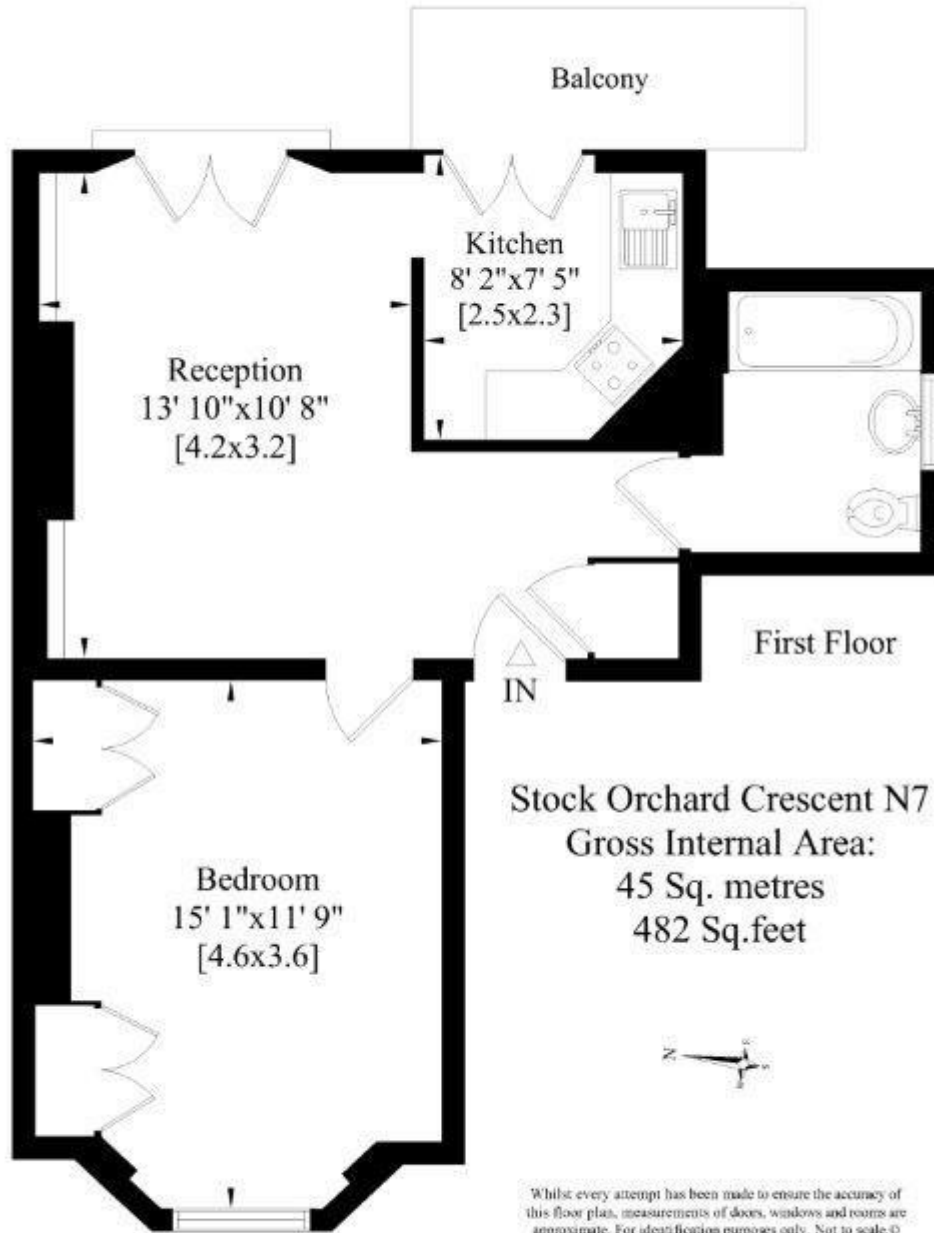


Stock Orchard Crescent, Islington, London, N7 9SL

This excellent one bedroom flat has a wrought iron balcony with a spiral staircase leading to a spacious shared garden.

Stock Orchard Crescent is a quiet road located only a few minutes' walk from Caledonian Road tube station and therefore within striking distance of Kings Cross and The City.





Whilst every attempt has been made to ensure the accuracy of the floor plans contained here, measurements of doors, windows and rooms are approximate and no responsibility is taken for any error, omission or mis-statement. These plans are for representation purposes only as defined by RICS Code of Measuring Practice and should be used as such by any prospective purchaser. The services, systems and appliances listed in this specification have not been tested and no guarantee as to their operating ability or their efficiency can be given.

