



**Shoreditch Heights 105,
Britannia Walk, Islington,
London, N1 7GN**

£750,000 leasehold

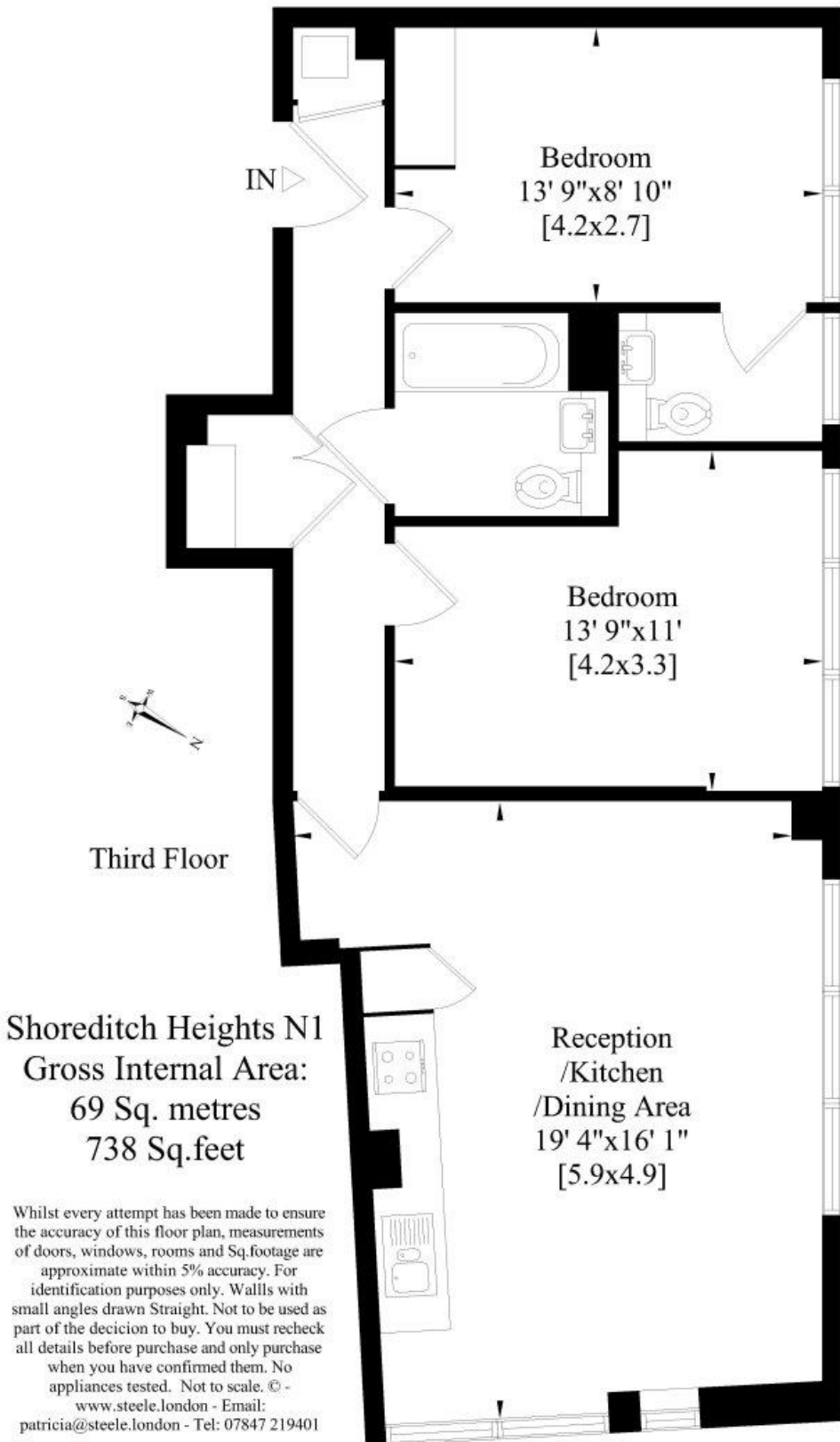
1 Reception Room | 2 Bedrooms

Stunning two-bedroom one bathroom third floor, leasehold apartment located in this modern development in the heart of the regeneration area of Shoreditch. Property has been made to a beautiful standard. and offers 738 sq ft of living space which consists of two double bedroom, spacious open plan kitchen and lounge, luxury bathroom, separate WC and luxury fixture and fittings throughout. Amenities of Angel and Old Street are minutes away.



Shoreditch Heights 105, Britannia Walk, Islington, London, N1





Whilst every attempt has been made to ensure the accuracy of the floor plans contained here, measurements of doors, windows and rooms are approximate and no responsibility is taken for any error, omission or mis-statement. These plans are for representation purposes only as defined by RIICS Code of Measuring Practice and should be used as such by any prospective purchaser. The services, systems and appliances listed in this specification have not been tested and no guarantee as to their operating ability or their efficiency can be given.

