



Liverpool Road, London, N1 1LA

Offers in excess of: £795,000 Share of Freehold

2 Total Bedrooms | 1 Reception Room | 2 Bathrooms

A rare opportunity to acquire a spacious and characterful two-bedroom share of freehold maisonette, benefitting from a private south-west facing roof terrace.

- Share of Freehold Upper Maisonette
- Moments from Upper Street & Barnsbury
- Private South-West Facing Roof Terrace
- Impressive 24ft Open-Plan Living Space
- Prime Islington Address



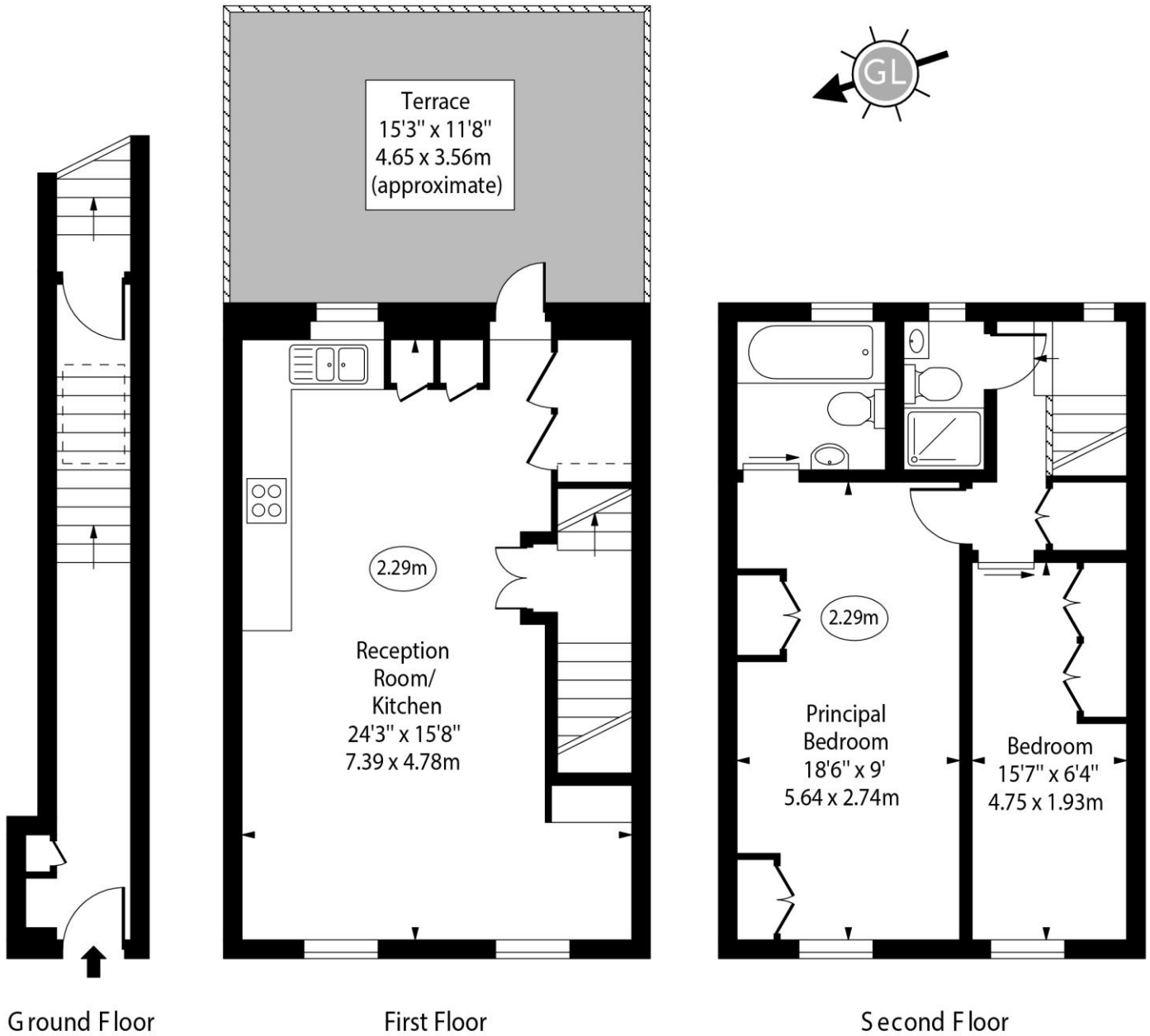
160A, Liverpool Road, London, N1 1LA

Arranged over the upper floors of an attractive period building, this beautifully presented home offers approximately 880 sq ft of bright and well-balanced accommodation. The impressive open-plan reception room and kitchen extends to over 24ft in length, creating an excellent entertaining space with direct access to the private roof terrace, which enjoys a sunny south-west aspect.



Liverpool Road, N1

○ - Ceiling Height

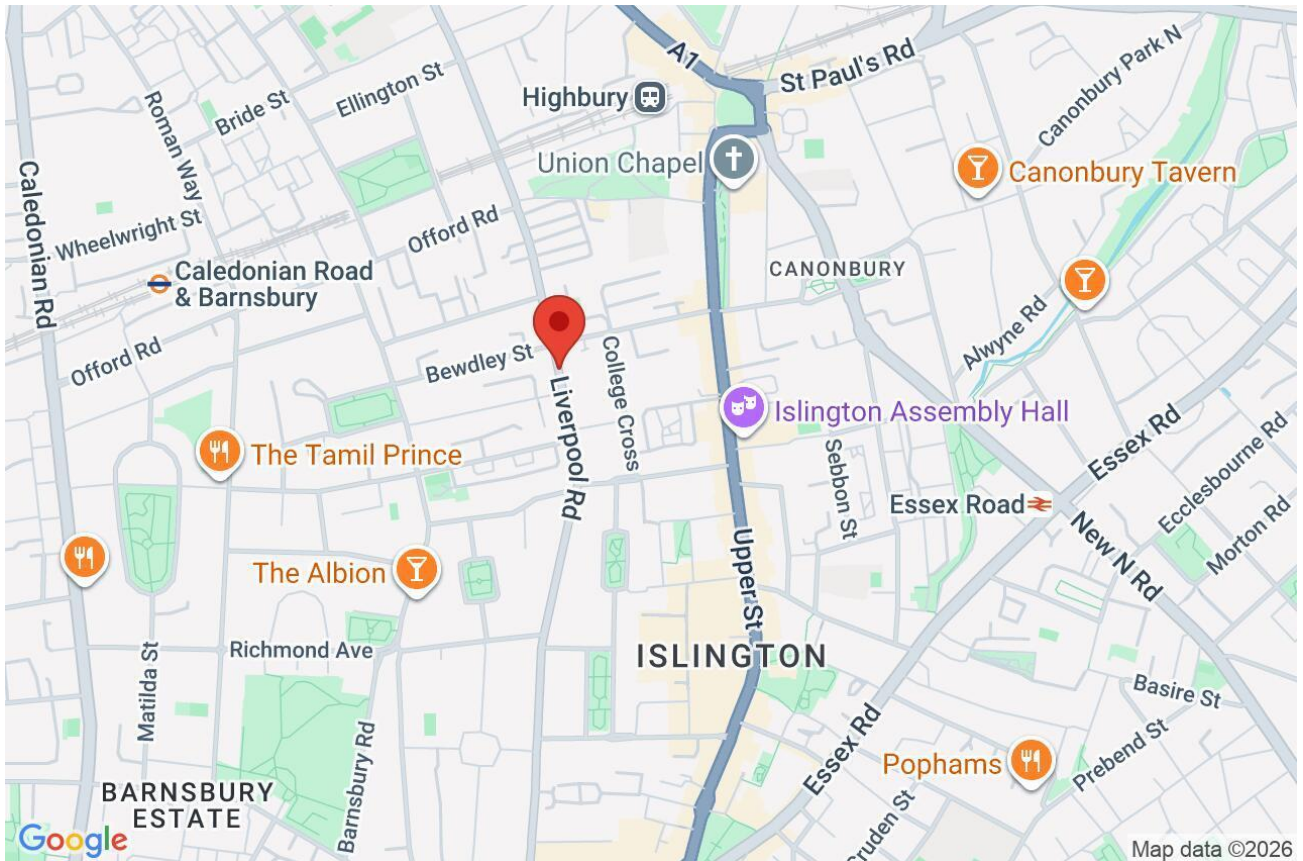


Approx Gross Internal Area 880 Sq Ft - 81.75 Sq M

Every attempt has been made to ensure the accuracy of the floor plan shown. However, all measurements, fixtures, fittings, and data shown are approximate interpretations and for illustrative purposes only. Measured according to the RICS. Not To Scale.

www.goldlens.co.uk
Ref. No. 032000E

Whilst every attempt has been made to ensure the accuracy of the floor plans contained here, measurements of doors, windows and rooms are approximate and no responsibility is taken for any error, omission or mis-statement. These plans are for representation purposes only as defined by RICS Code of Measuring Practice and should be used as such by any prospective purchaser. The services, systems and appliances listed in this specification have not been tested and no guarantee as to their operating ability or their efficiency can be given.



Score	Energy rating	Current	Potential
92+	A		
81-91	B		
69-80	C		73 C
55-68	D	66 D	
39-54	E		
21-38	F		
1-20	G		