



## Crowland Terrace, London, N1 3LP

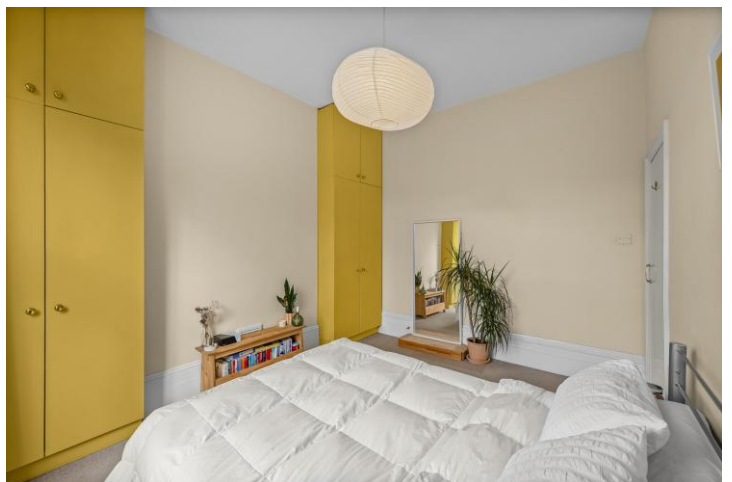
Asking Price: £525,000 Leasehold

**1 Bedrooms | 1 Reception Rooms | 1 Bathrooms**

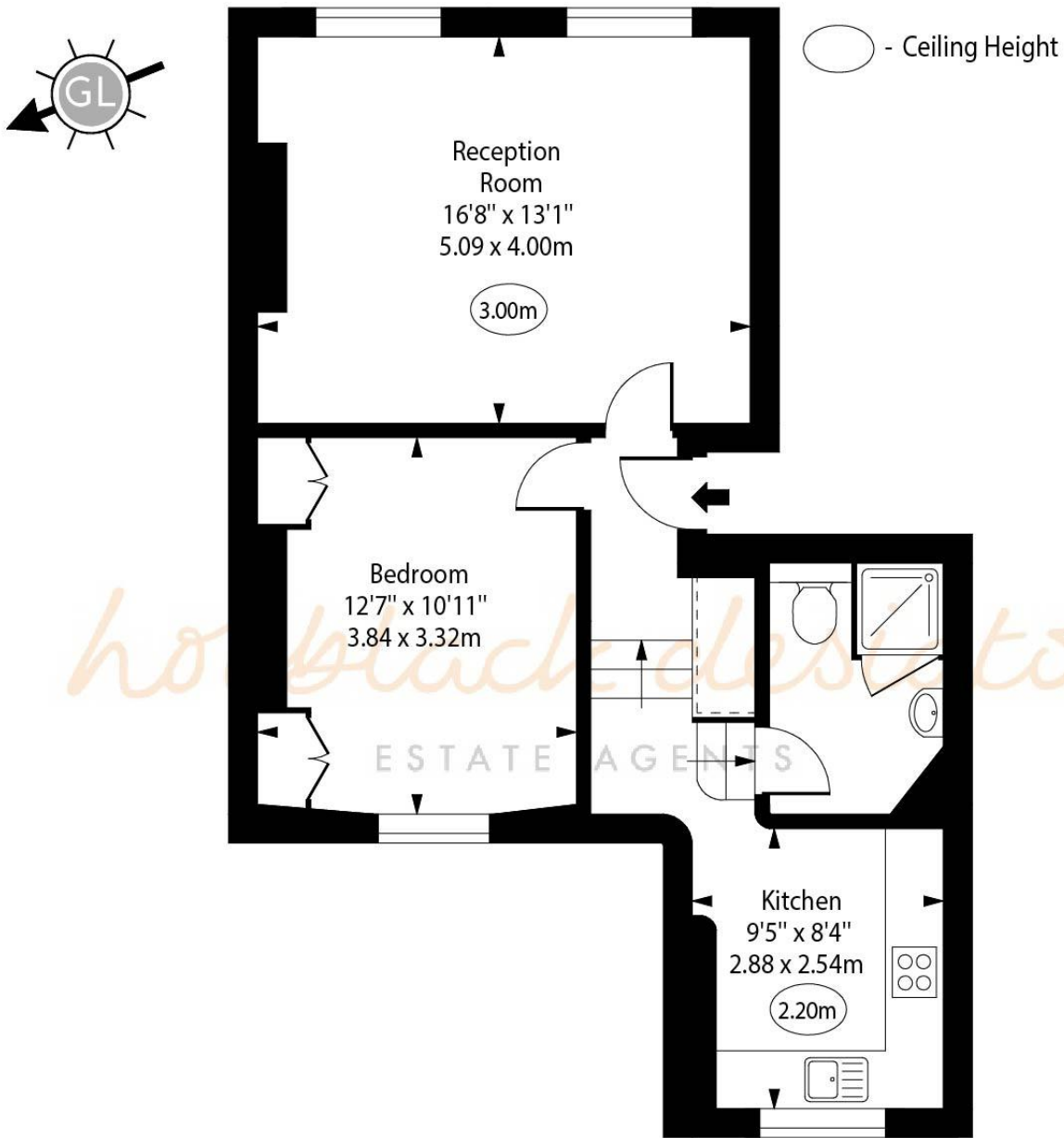
A spacious raised ground floor flat, front to back, with separate kitchen in a period conversion



## 5 Crowland Terrace, London, N1 3LP



# Crowland Terrace, N1



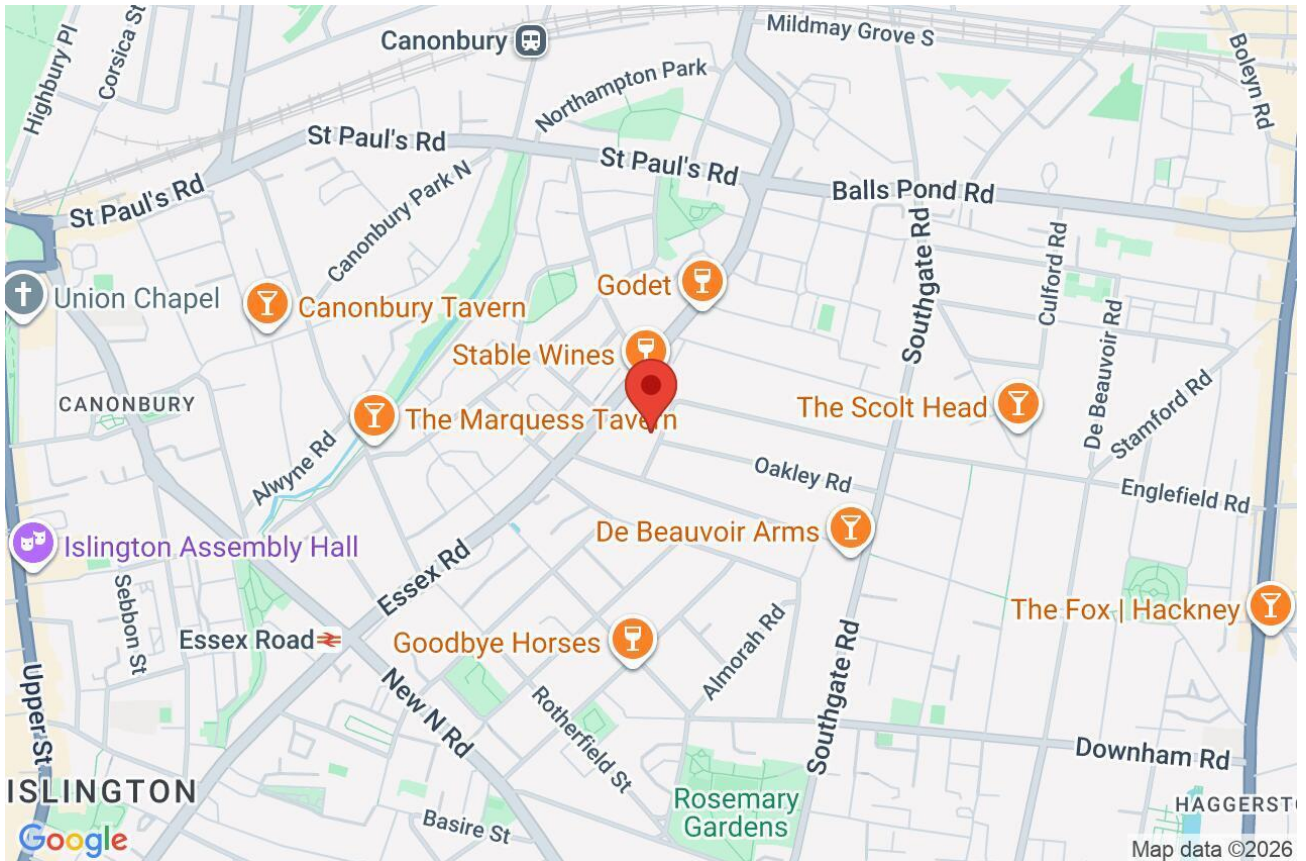
Upper Ground Floor

Approx Gross Internal Area      564 Sq Ft - 52.40 Sq M

Every attempt has been made to ensure the accuracy of the floor plan shown. However, all measurements, fixtures, fittings, and data shown are approximate interpretations and for illustrative purposes only. Measured according to the RICS. Not To Scale.

[www.goldlens.co.uk](http://www.goldlens.co.uk)  
Ref. No. 032195D

Whilst every attempt has been made to ensure the accuracy of the floor plans contained here, measurements of doors, windows and rooms are approximate and no responsibility is taken for any error, omission or mis-statement. These plans are for representation purposes only as defined by RICS Code of Measuring Practice and should be used as such by any prospective purchaser. The services, systems and appliances listed in this specification have not been tested and no guarantee as to their operating ability or their efficiency can be given.



Score	Energy rating	Current	Potential
92+	A		
81-91	B		
69-80	C	69 C	76 C
55-68	D		
39-54	E		
21-38	F		
1-20	G		