



Shepperton Road, London, N1 3DQ

Asking Price: £450,000 Share of
Freehold

1 Bedroom | 1 Reception Room | 1 Bathroom

A bright, spacious & smart one bedroom apartment with patio in a trendy part of town between Angel, De Beauvoir and Dalston

- Share of Freehold 104 years 7 months
- Garden Flat
- 480 Approx Sq Ft
- Service charge £750 pa

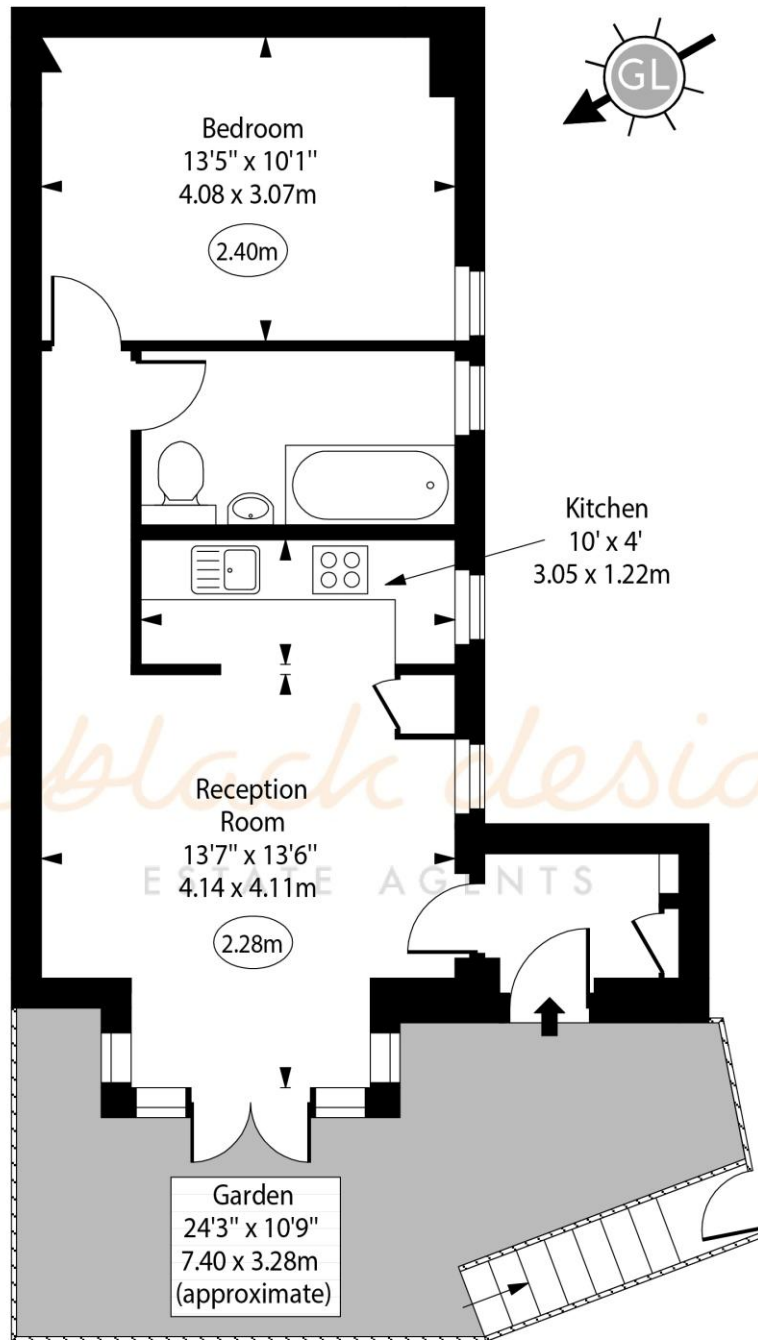


Shepperton Road, London, N1 3DQ



Shepperton Road, N1

○ - Ceiling Height



Lower Ground Floor

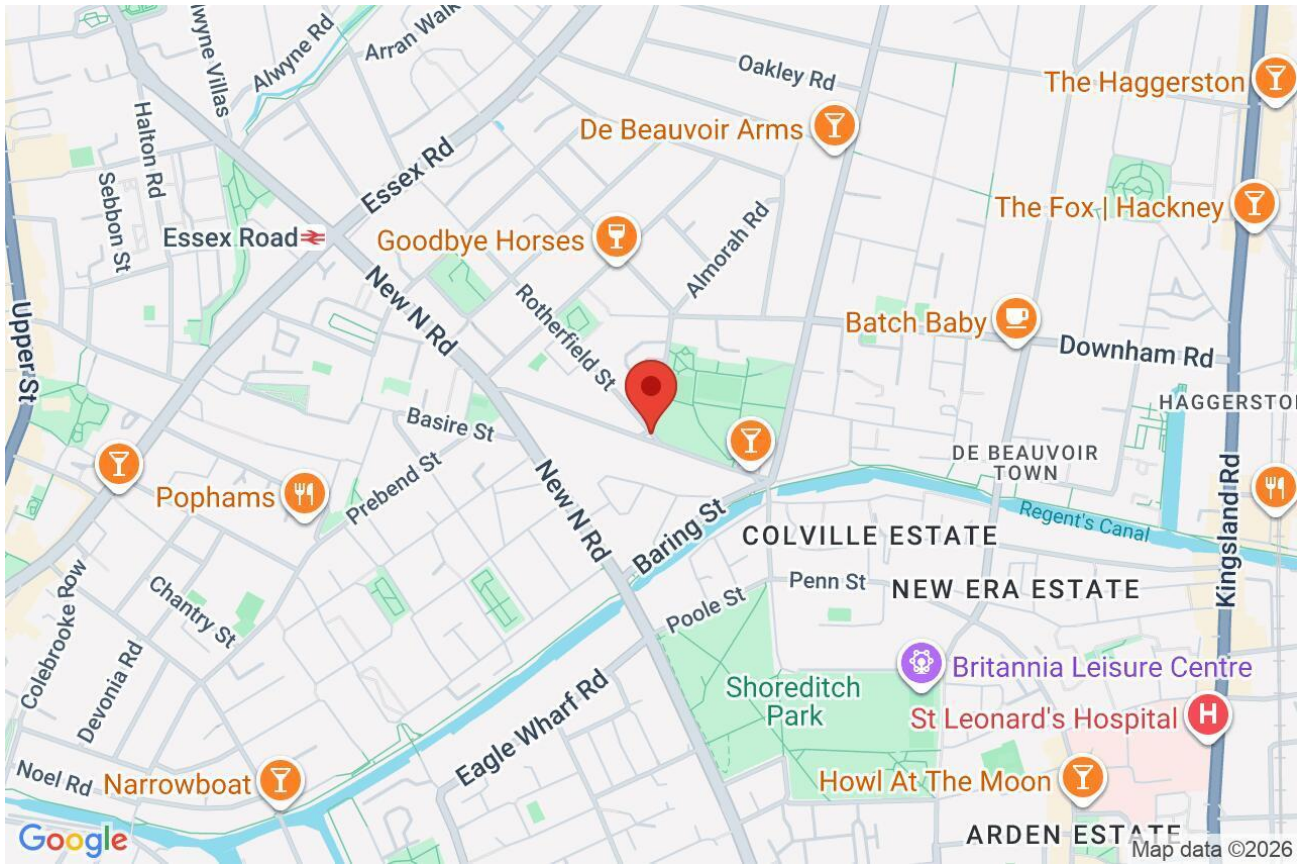
Approx Gross Internal Area 482 Sq Ft - 44.78 Sq M

Every attempt has been made to ensure the accuracy of the floor plan shown. However, all measurements, fixtures, fittings, and data shown are approximate interpretations and for illustrative purposes only. Measured according to the RICS. Not To Scale.

www.goldlens.co.uk

Ref. No. 031617R

Whilst every attempt has been made to ensure the accuracy of the floor plans contained here, measurements of doors, windows and rooms are approximate and no responsibility is taken for any error, omission or mis-statement. These plans are for representation purposes only as defined by RICS Code of Measuring Practice and should be used as such by any prospective purchaser. The services, systems and appliances listed in this specification have not been tested and no guarantee as to their operating ability or their efficiency can be given.



Score	Energy rating	Current	Potential
92+	A		
81-91	B		
69-80	C		
55-68	D	69 C	77 C
39-54	E		
21-38	F		
1-20	G		