



## Drayton Park, London, N5 1LU

Asking Price: £465,000 Share of Freehold

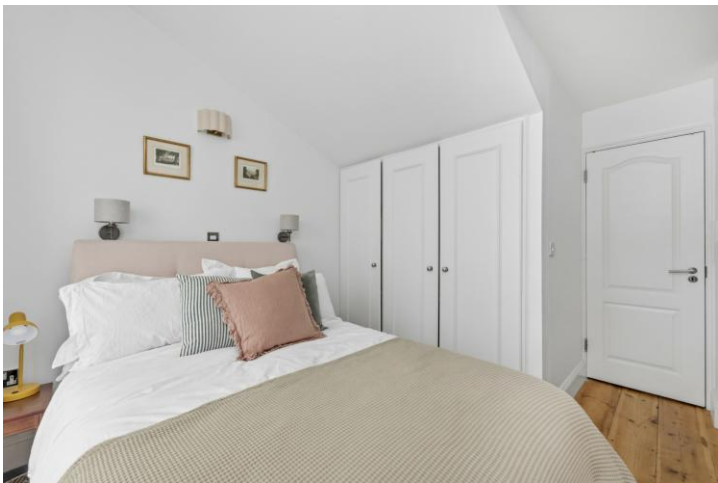
**1 Total Bedroom | 1 Reception Room | 1 Bathroom**

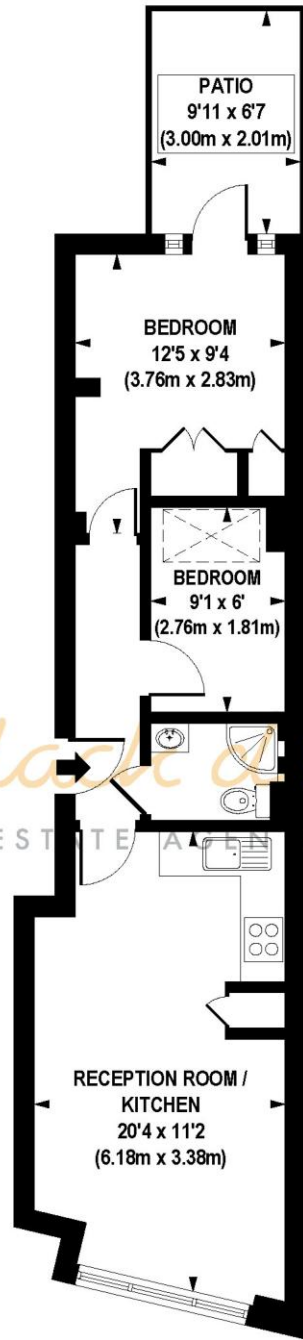
Charming, share of freehold period garden flat in a prime location. One good sized double bed and additional study. Drayton Park has become significantly more popular recently due to traffic calming measures and has great transport links, a Tesco Express and Highbury Fields a few moments away

- Share of Freehold 997 years
- Garden



# Drayton Park, London, N5 1LU





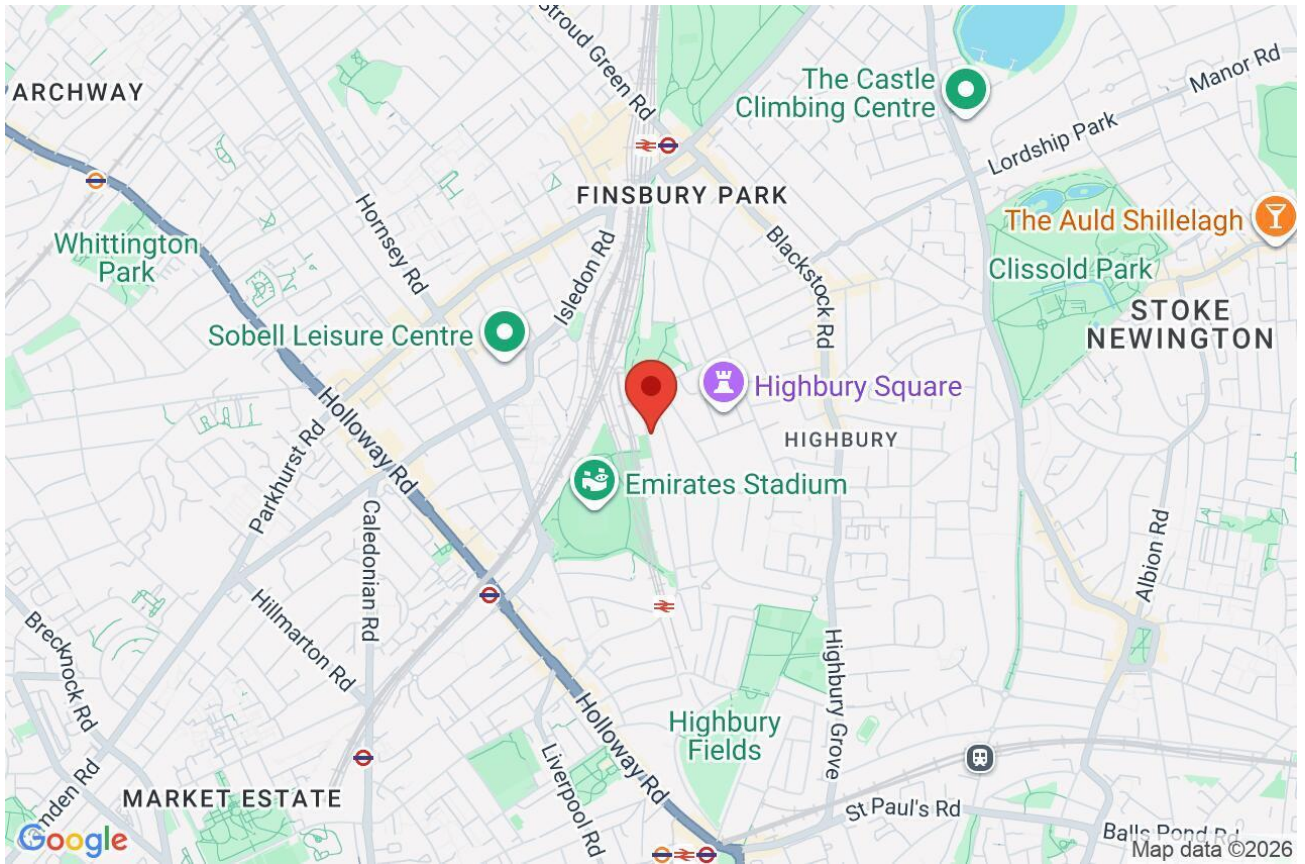
*hotblack asiato*  
ESTATE AGENTS

GROUND FLOOR

**APPROX. GROSS INTERNAL FLOOR AREA 448 sq. ft / 41.62 sq. m**

Floorplan is for illustrative purposes only and is not to scale.  
Every attempt has been made to ensure the accuracy of the floorplan shown, however all measurements, fixtures, fittings and data shown are an approximate interpretation for illustrative purposes only.  
Liability for errors, omissions or mis-statement through negligence or otherwise is hereby excluded.

Whilst every attempt has been made to ensure the accuracy of the floor plans contained here, measurements of doors, windows and rooms are approximate and no responsibility is taken for any error, omission or mis-statement. These plans are for representation purposes only as defined by RICS Code of Measuring Practice and should be used as such by any prospective purchaser. The services, systems and appliances listed in this specification have not been tested and no guarantee as to their operating ability or their efficiency can be given.



Score	Energy rating	Current	Potential
92+	<b>A</b>		
81-91	<b>B</b>		
69-80	<b>C</b>	70 C	75 C
55-68	<b>D</b>		
39-54	<b>E</b>		
21-38	<b>F</b>		
1-20	<b>G</b>		