



## Stavordale Road, London, N5 1NE

Asking Price: £625,000 Share of  
Freehold

**1 Bedroom | 1 Reception Room | 1 Bathroom**

A beautifully presented one-bedroom period conversion set within an attractive property on a quiet residential road in Highbury. The property offers a spacious reception room, separate fitted kitchen, bright double bedroom, modern bathroom, and a substantial cellar. Further benefits include access to approximately one-third of the garden, with only two flats in the building and a share of freehold.

- Share of Freehold 997 years  
10 months

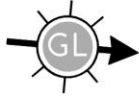


## Stavordale Road, London, N5 1NE

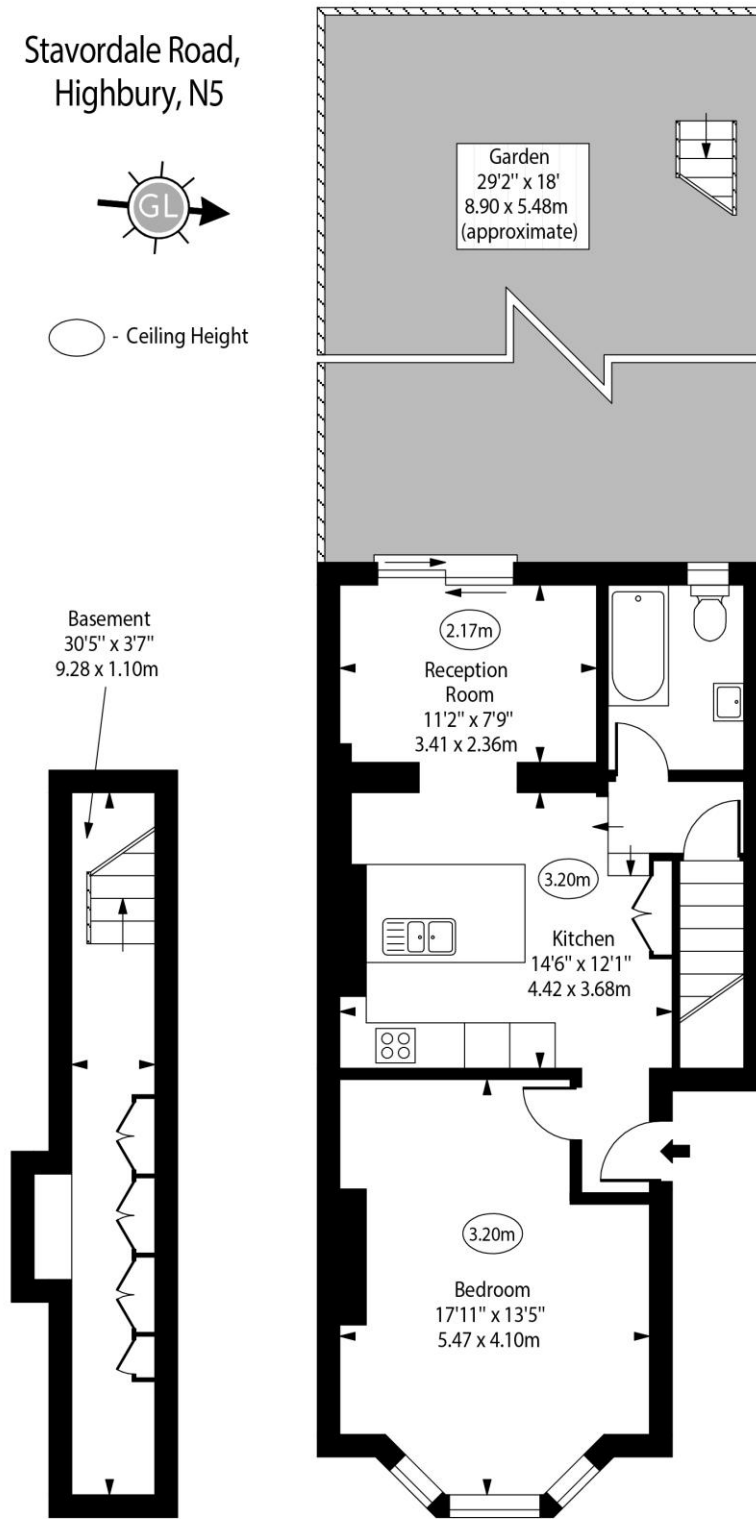
A beautifully presented one-bedroom period conversion, set within an attractive building on a quiet residential road in the heart of Highbury. The property offers well-balanced and generously proportioned accommodation throughout, including a spacious reception room, a separate fitted kitchen, a bright double bedroom and a modern bathroom.



Stavordale Road,  
Highbury, N5



○ - Ceiling Height



Basement

Ground Floor

Approx Gross Internal Area

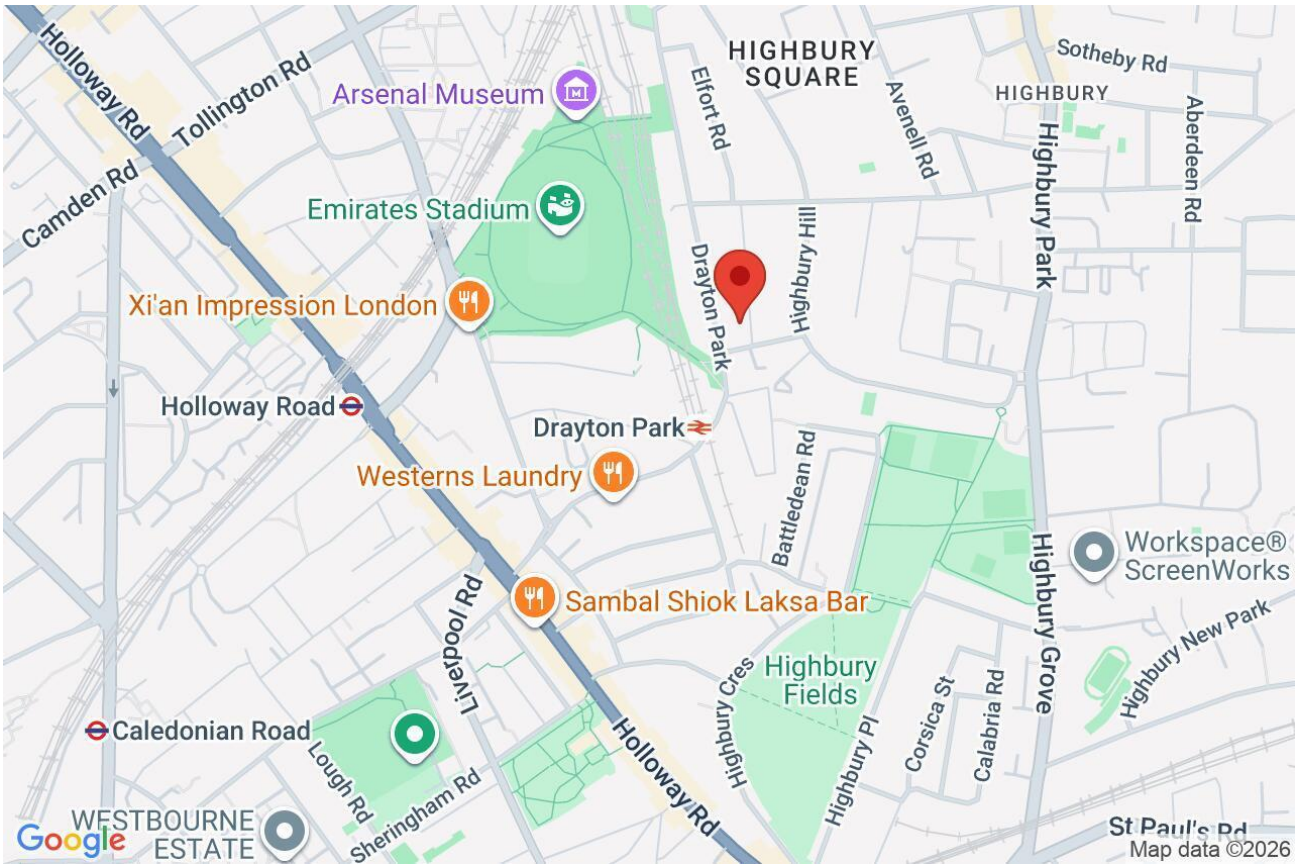
710 Sq Ft - 65.96 Sq M

Every attempt has been made to ensure the accuracy of the floor plan shown. However, all measurements, fixtures, fittings, and data shown are approximate interpretations and for illustrative purposes only. Measured according to the RICS. Not To Scale.

[www.goldlens.co.uk](http://www.goldlens.co.uk)

Ref. No. 031057D

Whilst every attempt has been made to ensure the accuracy of the floor plans contained here, measurements of doors, windows and rooms are approximate and no responsibility is taken for any error, omission or mis-statement. These plans are for representation purposes only as defined by RICS Code of Measuring Practice and should be used as such by any prospective purchaser. The services, systems and appliances listed in this specification have not been tested and no guarantee as to their operating ability or their efficiency can be given.



Score	Energy rating	Current	Potential
92+	A		
81-91	B		
69-80	C	74 C	79 C
55-68	D		
39-54	E		
21-38	F		
1-20	G		