



Framfield Road, London, N5 1UU

Asking Price: £2,250,000 Freehold

5 Bedrooms | 2 Bathrooms

Beautiful 5-bedroom period terraced house in a sought-after road adjacent to Highbury Fields. Peaceful, bright and spacious, this house is a short walk to Highbury & Islington tube, Highbury Barn and Drayton Park station (10 minutes to Moorgate)

- Freehold

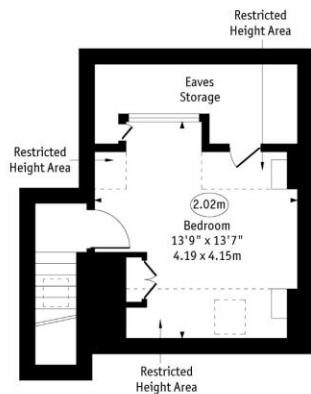
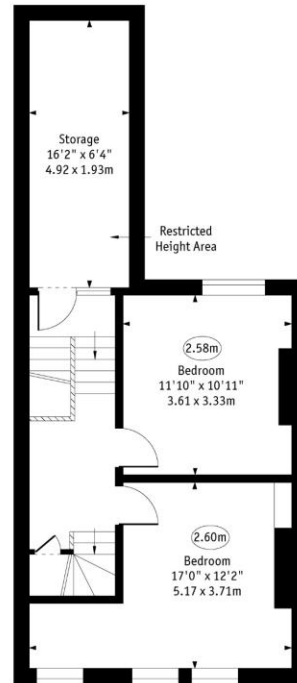
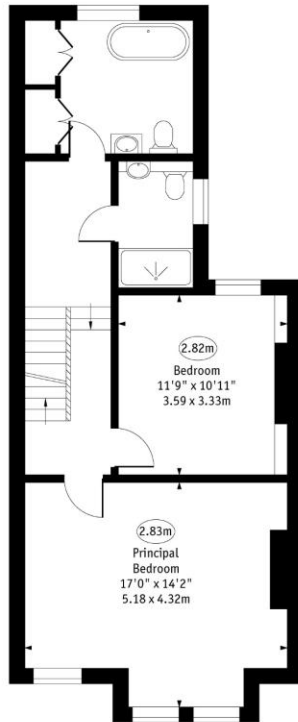
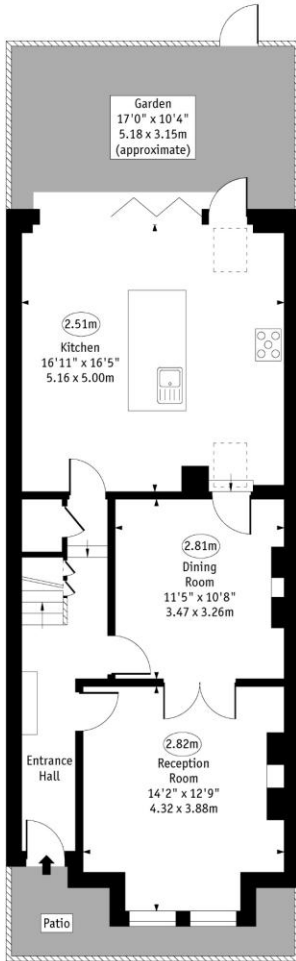


Framfield Road, London, N5 1UU



Framfield Road, N5

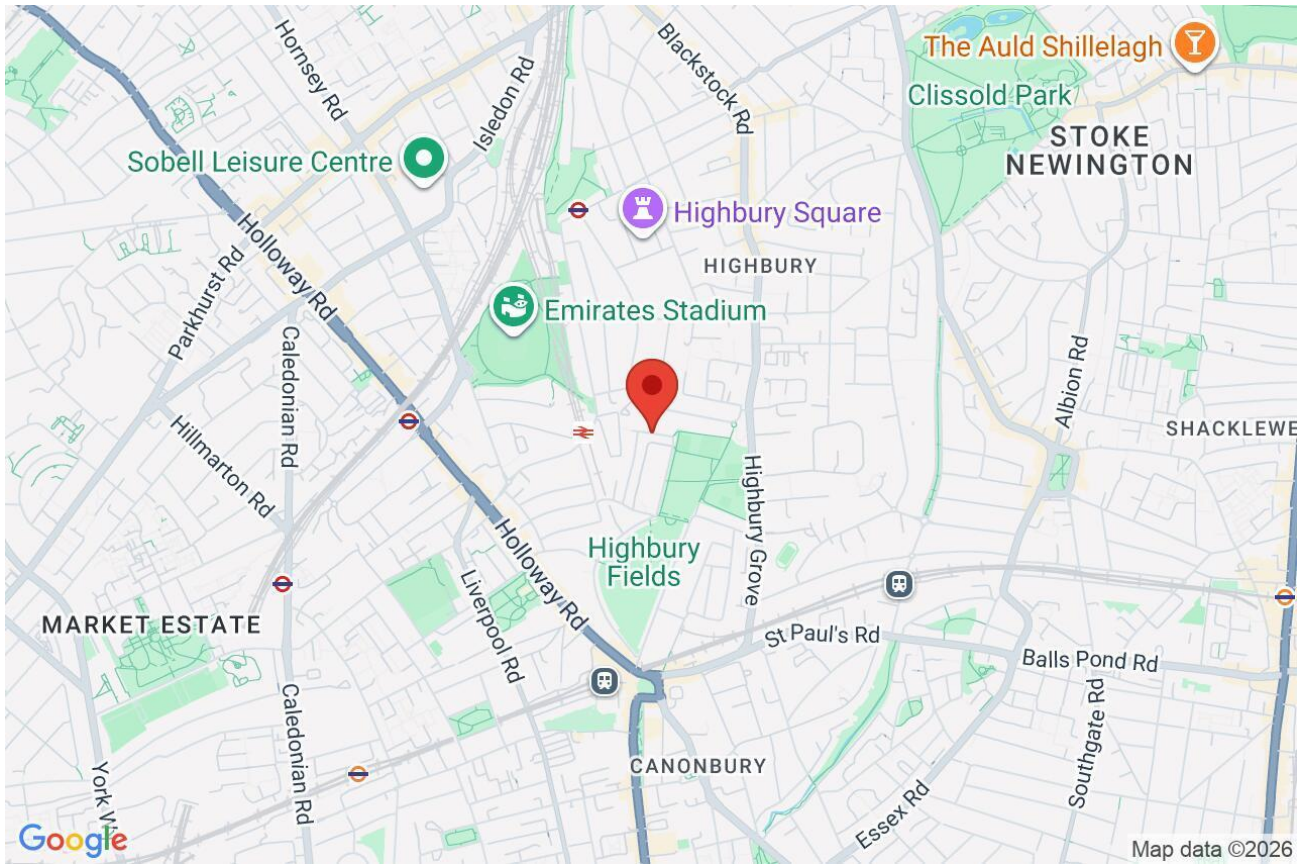
○ - Ceiling Height



Approx Gross Internal Area 1835 Sq Ft - 170.47 Sq M
 Approx. Floor Area Including Restricted Heights (Including Eaves Storage) 2055 Sq Ft - 190.91 Sq M

Every attempt has been made to ensure the accuracy of the floor plan shown. However, all measurements, fixtures, fittings, and data shown are approximate interpretations and for illustrative purposes only. Measured according to the RICS. Not To Scale.
 www.goldlens.co.uk
 Ref. No. 0315373H

Whilst every attempt has been made to ensure the accuracy of the floor plans contained here, measurements of doors, windows and rooms are approximate and no responsibility is taken for any error, omission or mis-statement. These plans are for representation purposes only as defined by RICS Code of Measuring Practice and should be used as such by any prospective purchaser. The services, systems and appliances listed in this specification have not been tested and no guarantee as to their operating ability or their efficiency can be given.



Score	Energy rating	Current	Potential
92+	A		
81-91	B		
69-80	C		79 C
55-68	D	66 D	
39-54	E		
21-38	F		
1-20	G		