



## Roseleigh Avenue, London, N5 1SP

Asking Price: £750,000 Share of  
Freehold

**2 Bedrooms | 1 Reception Room | 1 Bathroom**

A fantastic two bedroom upper maisonette property on the first floor of this period conversion situated on a quiet road. The property offers a bright reception with large bay windows, a fitted kitchen, bathroom, two double bedrooms

- Share of Freehold
- Service charge £500 pa



## Roseleigh Avenue, London, N5 1SP

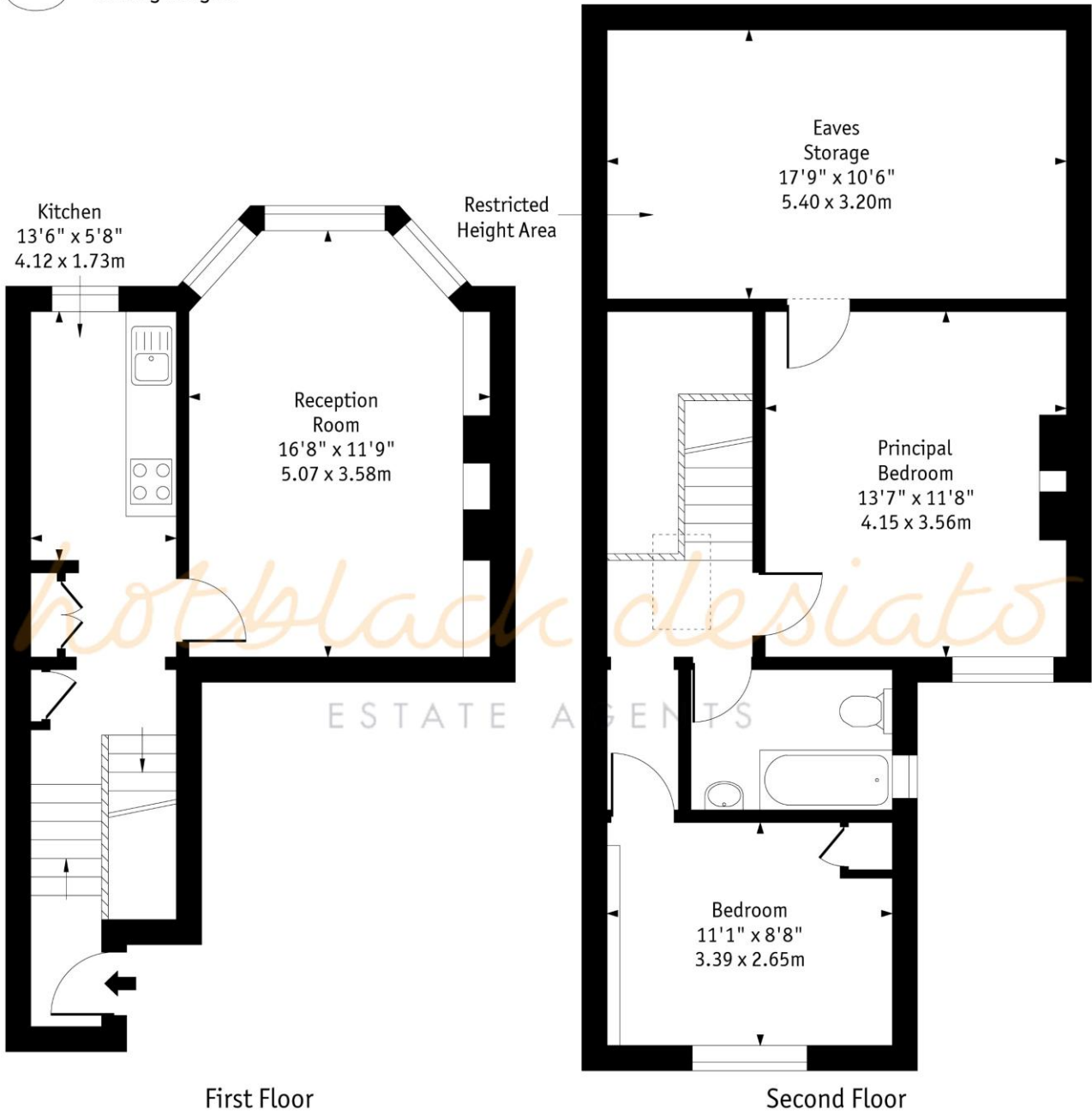
Roseleigh Avenue is a peaceful residential street close to Highbury Barn and Highbury Fields. Highbury Barn offers an exclusive array of boutiques and delis including Godfreys Butcher, Bournes Fishmonger, Da Mario delicatessen and La Fromagerie as well as a few convenience stores/newsagents.



# Roseleigh Avenue, N5



○ - Ceiling Height



First Floor

Second Floor

Approx Gross Internal Area      746 Sq Ft - 69.30 Sq M

Approx. Floor Area Including Restricted Heights      943 Sq Ft - 87.61 Sq M  
(Including Eaves Storage)

Every attempt has been made to ensure the accuracy of the floor plan shown. However, all measurements, fixtures, fittings, and data shown are approximate interpretations and for illustrative purposes only. Measured according to the RICS. Not To Scale.

[www.goldlens.co.uk](http://www.goldlens.co.uk)  
Ref. No. 030688JH

Whilst every attempt has been made to ensure the accuracy of the floor plans contained here, measurements of doors, windows and rooms are approximate and no responsibility is taken for any error, omission or mis-statement. These plans are for representation purposes only as defined by RICS Code of Measuring Practice and should be used as such by any prospective purchaser. The services, systems and appliances listed in this specification have not been tested and no guarantee as to their operating ability or their efficiency can be given.

