



Pitt House, Loxford Gardens, London, N5 1GG

Offers in excess of: £685,000 Leasehold

2 Total Bedrooms

Moments from La Lupa, Godfrey's butchers, La Fromagerie as well as Highbury Fields, this splendid modern two bedroom flat will suit perfectly for a young couple.

- Leasehold 111 years 9 months
- Service Charge including Ground Rent £4,931 pa
- First Floor

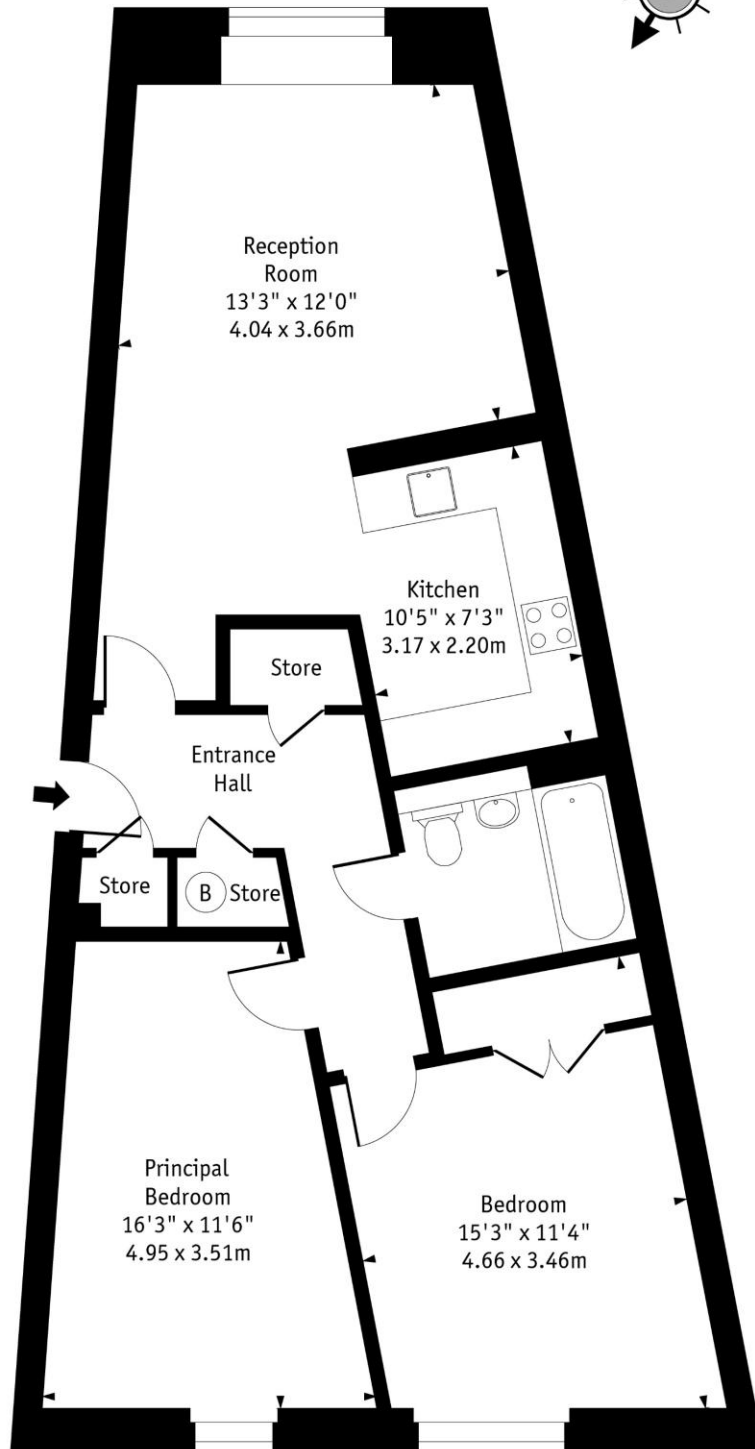


Pitt House, Loxford Gardens, London, N5 1GG

Set within a smart and well-maintained modern development in the heart of Highbury, this beautifully proportioned two-bedroom apartment offers a rare combination of space, comfort and superb connectivity. Bright, generous and larger than many modern flats, it is a home that feels immediately welcoming, equally suited to first-time buyers, professionals, downsizers, investors or anyone looking for a stylish London base in an exceptional neighbourhood.



Pitt House,
Loxford Gardens, N5



Second Floor

Approx Gross Internal Area 801 Sq Ft - 74.42 Sq M

Every attempt has been made to ensure the accuracy of the floor plan shown. However, all measurements, fixtures, fittings, and data shown are approximate interpretations and for illustrative purposes only. Measured according to the RICS. Not To Scale.

www.goldlens.co.uk
Ref. No. 030821JH

Whilst every attempt has been made to ensure the accuracy of the floor plans contained here, measurements of doors, windows and rooms are approximate and no responsibility is taken for any error, omission or mis-statement. These plans are for representation purposes only as defined by RICS Code of Measuring Practice and should be used as such by any prospective purchaser. The services, systems and appliances listed in this specification have not been tested and no guarantee as to their operating ability or their efficiency can be given.

