



Highbury Stadium Square, London, N5 1FN

£675,000 Leasehold

2 Bedrooms | 1 Reception Room | 2 Bathrooms

The pick of the bunch - a fabulous, 6th floor, pitch/ south facing two bedroom apartment with full width balcony.

- Leasehold 236 years
- Service charge: £4989 pa
- Ground rent: £450 pa
- NB: The Stadium Square development blocks do not currently have valid EWS 1 certificates, for which the necessary external remedial works are scheduled to be underway in 2026



Northstand Apartments, Highbury Stadium Square, London,

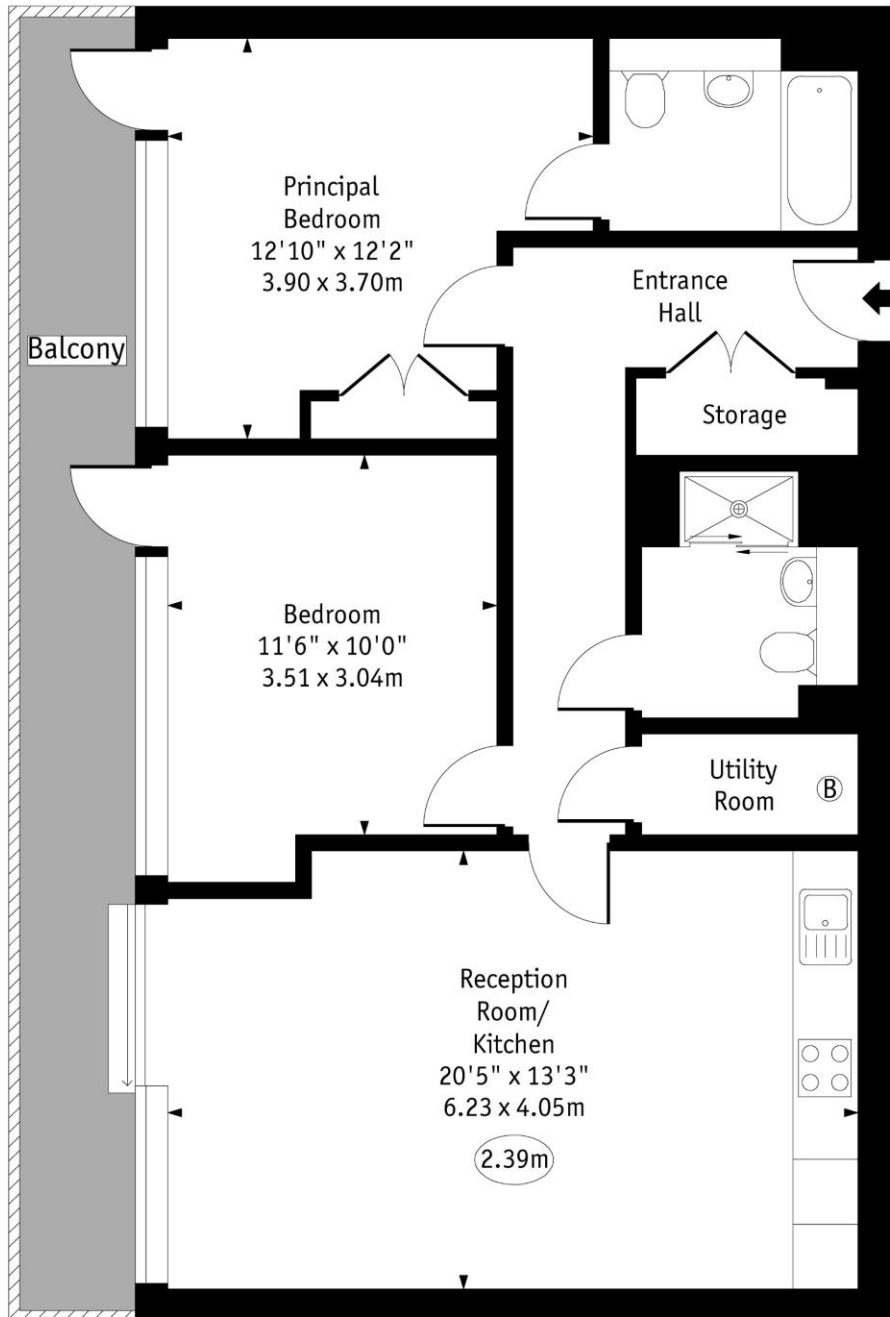
It is wonderfully peaceful up at the top of the Northstand. Difficult to believe you are in the heart of London as you overlook the immaculate landscaping of the old Highbury stadium football pitch.

This apartment boasts floor to ceiling windows in the living room and both bedrooms, bathing the whole dwelling in sunlight.



Northstand, N5

○ - Ceiling Height



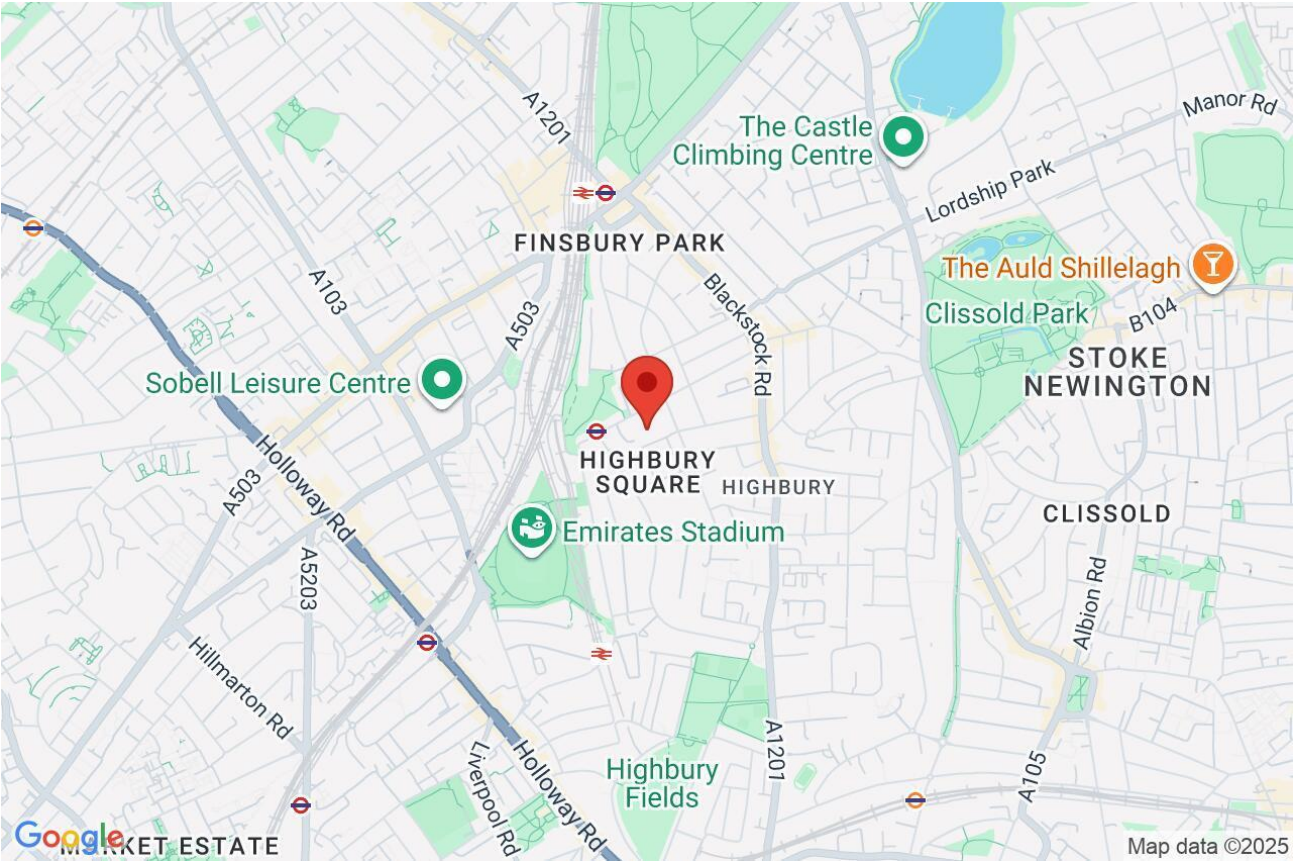
Sixth Floor

Approx Gross Internal Area 794 Sq Ft - 73.75 Sq M

Every attempt has been made to ensure the accuracy of the floor plan shown. However, all measurements, fixtures, fittings, and data shown are approximate interpretations and for illustrative purposes only. Measured according to the RICS. Not To Scale.

www.goldlens.co.uk
Ref. No. 029211DH

Whilst every attempt has been made to ensure the accuracy of the floor plans contained here, measurements of doors, windows and rooms are approximate and no responsibility is taken for any error, omission or mis-statement. These plans are for representation purposes only as defined by RICS Code of Measuring Practice and should be used as such by any prospective purchaser. The services, systems and appliances listed in this specification have not been tested and no guarantee as to their operating ability or their efficiency can be given.



Score	Energy rating	Current	Potential
92+	A		
81-91	B	84 B	86 B
69-80	C		
55-68	D		
39-54	E		
21-38	F		
1-20	G		