



Flat 2, 12-14 Newington Green Road, London, N1 4RX

Offers in the region of: £550,000
Leasehold

2 Total Bedrooms | 1 Reception Rooms | 1 Bathrooms

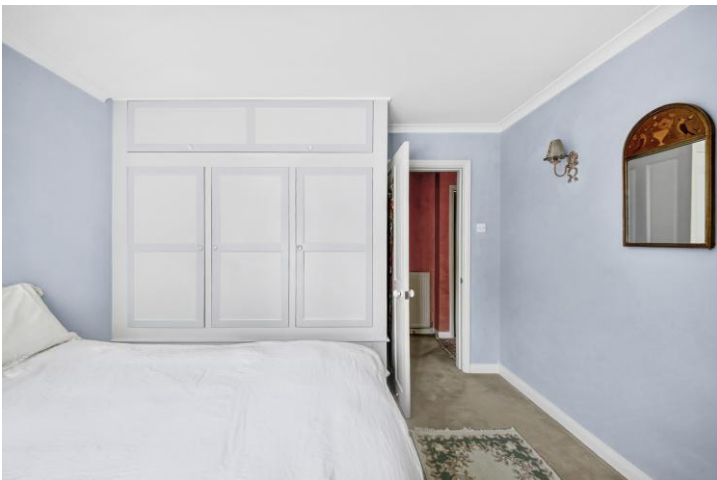
Perfectly positioned between the vibrant hubs of Islington and Stoke Newington, this bright and airy two-bedroom first floor apartment offers generous proportions, excellent transport links, and the charm of Clissold Park just around

- Leasehold 158 years
- Flat/Apartment
- 2 Total Bedrooms
- First Floor
- 1 Reception Rooms
- Communal Gardens
- 1 Bathrooms
- Resident Parking



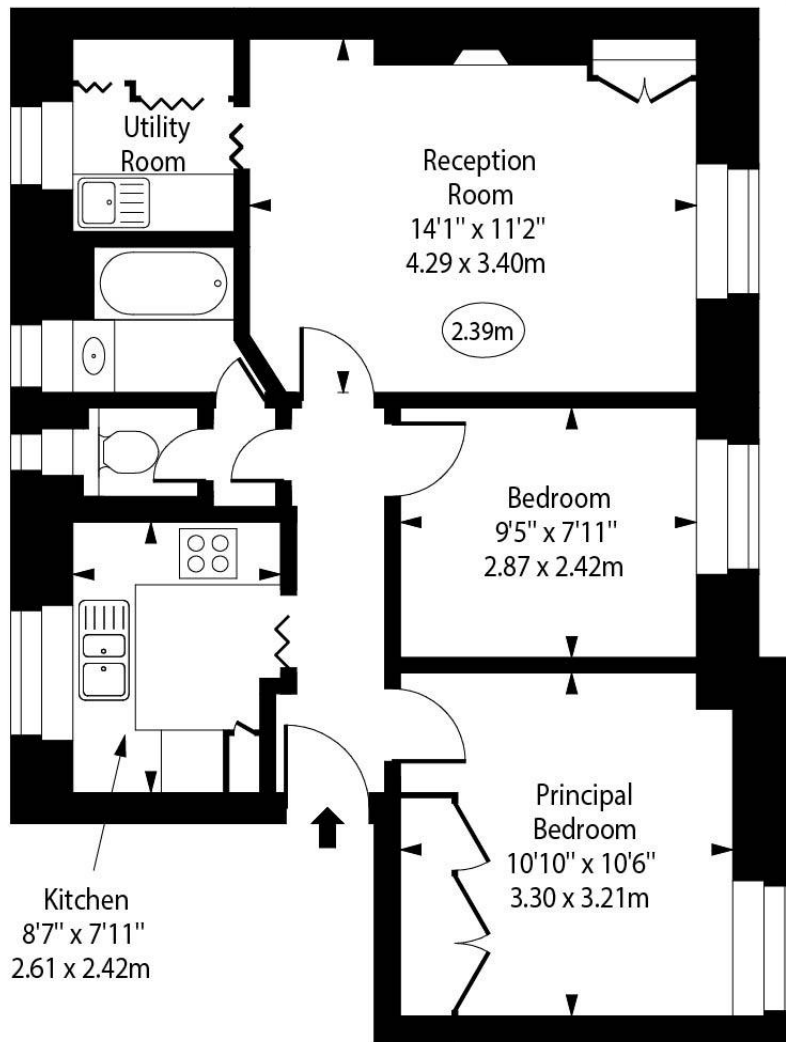
Flat 2, 12-14 Newington Green Road, London, N1 4RX

Inside, you'll find two well-sized double bedrooms, a handy separate utility room, and a spacious reception that enjoys views over the peaceful communal gardens. Spanning approximately 550 sq. ft, the flat is well-presented and filled with natural light, but also offers scope for cosmetic improvements to truly make it your own.



Newington Green Road, N1

○ - Ceiling Height



First Floor

Approx Gross Internal Area 545 Sq Ft - 50.63 Sq M

Every attempt has been made to ensure the accuracy of the floor plan shown. However, all measurements, fixtures, fittings, and data shown are approximate interpretations and for illustrative purposes only. Measured according to the RICS. Not To Scale.

www.goldlens.co.uk
Ref. No. 028829D

Whilst every attempt has been made to ensure the accuracy of the floor plans contained here, measurements of doors, windows and rooms are approximate and no responsibility is taken for any error, omission or mis-statement. These plans are for representation purposes only as defined by RICS Code of Measuring Practice and should be used as such by any prospective purchaser. The services, systems and appliances listed in this specification have not been tested and no guarantee as to their operating ability or their efficiency can be given.

