



Wakelin House, Sebbon Street, London, N1 2EF

Asking Price: £500,000 Leasehold

1 Total Bedrooms | 1 Reception Rooms | 1 Bathrooms

A beautifully presented one-bedroom apartment set on the third floor of this attractive period building, ideally positioned on the Islington/De Beauvoir border, offering bright, well-proportioned accommodation, access to communal gardens and lift service, all within easy reach of Islington, Dalston and De Beauvoir.

- Beautifully presented one-bedroom apartment
- Prime Islington/De Beauvoir border location
- Moments from Upper Street's cafés, restaurants and boutiques
- Access to attractive, well-maintained communal gardens



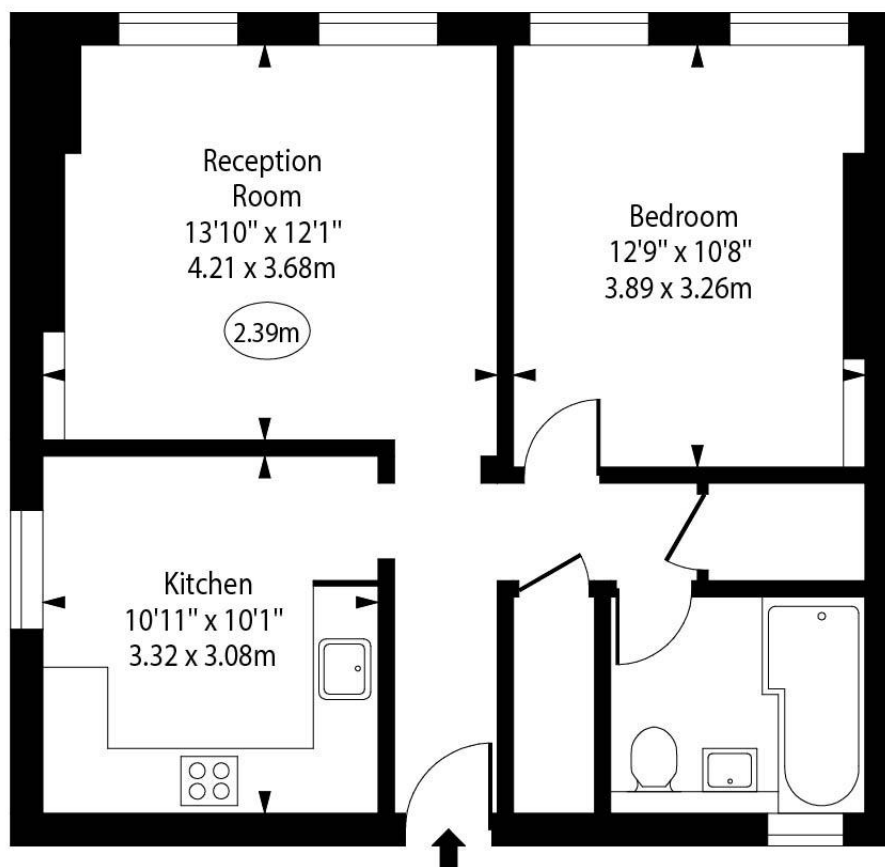
Wakelin House, Sebbon Street, London, N1 2EF

Set on the third floor of the well-maintained Wakelin House, this beautifully presented one-bedroom apartment offers spacious and thoughtfully arranged accommodation extending to approximately 581 sq ft, ideally positioned on the highly sought-after Islington/De Beauvoir border.



Wakelin House,
Sebbon Street, N1

○ - Ceiling Height



Third Floor

Approx Gross Internal Area

581 Sq Ft - 53.96 Sq M

Every attempt has been made to ensure the accuracy of the floor plan shown. However, all measurements, fixtures, fittings, and data shown are approximate interpretations and for illustrative purposes only. Measured according to the RICS. Not To Scale.

www.goldlens.co.uk

Ref. No. 030399WI

