



Batchelor Street, London, N1 0EG

Asking Price: £485,000 Leasehold

1 Total Bedroom | 1 Reception Room | 1 Bathroom

A beautifully presented first floor one-bedroom apartment, ideally located in one of Islington's most sought-after spots.

- Features a well-maintained shared patio space, offering a peaceful escape in the heart of Islington
- Chain Free
- Perched on the first floor, the apartment benefits from a naturally bright and airy ambiance throughout.
- First floor

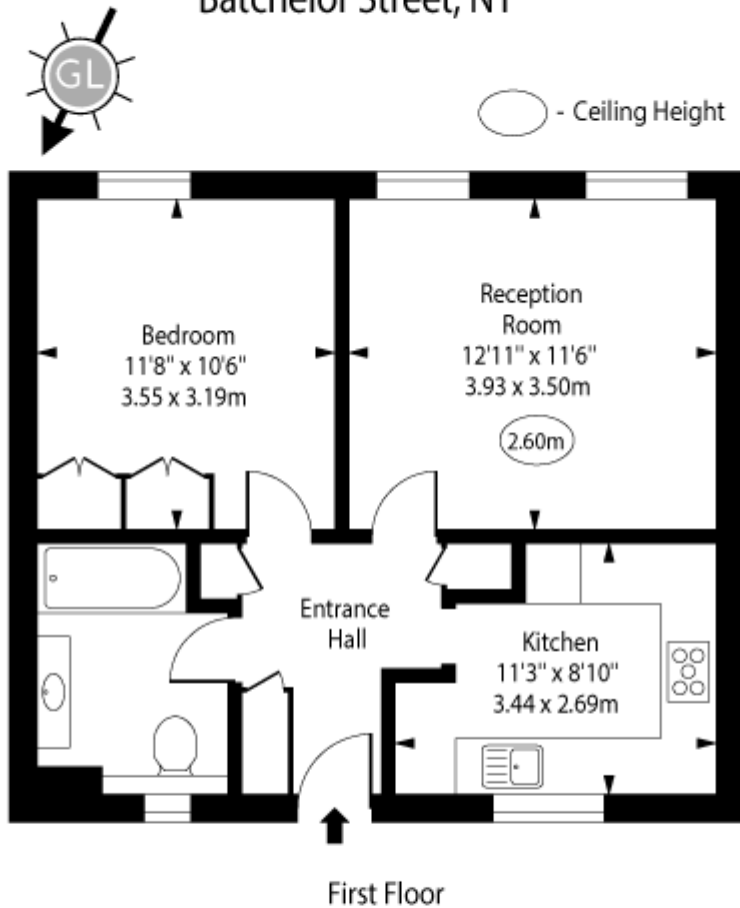


40 Batchelor Street, London, N1 0EG

This superb one-bedroom apartment boasts well-proportioned interiors throughout and is ideally positioned in a sought-after Islington location. The property features a generous double bedroom with ample space for storage, along with additional storage cupboards located throughout the flat, offering excellent practicality. Residents also benefit from access to a communal patio area, adding a pleasant outdoor space to this well-presented home.



Batchelor Street, N1



Approx Gross Internal Area

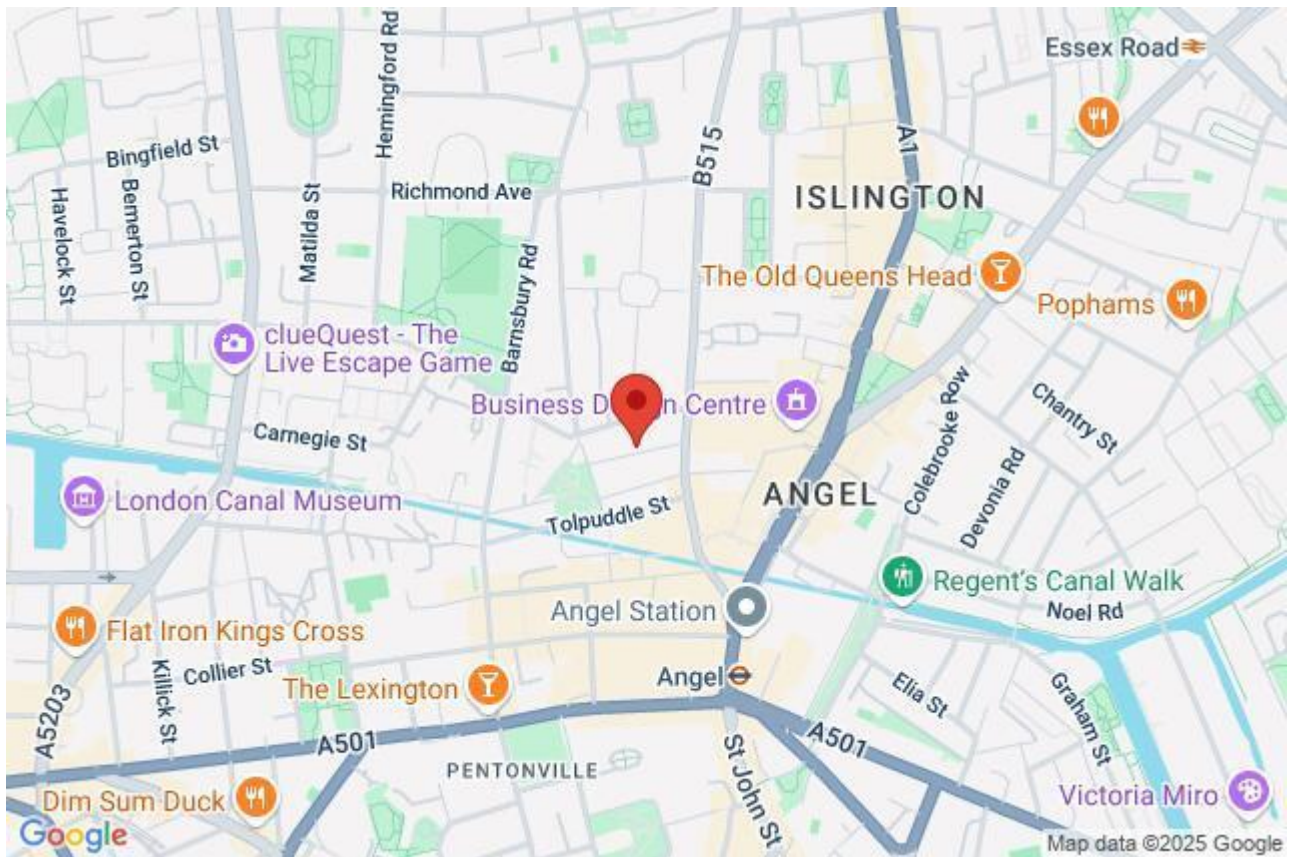
500 Sq Ft - 46.45 Sq M

Every attempt has been made to ensure the accuracy of the floor plan shown.
However, all measurements, fixtures, fittings, and data shown are approximate interpretations and
for illustrative purposes only.

Measured according to the RICS IPMS 2. Not To Scale.

www.goldlens.co.uk

Ref. No. 028310D



Energy Efficiency Rating		
	Current	Potential
Very energy efficient - lower running costs		
(92+) A		
(81-91) B		
(69-80) C		
(55-68) D	67	75
(39-54) E		
(21-38) F		
(1-20) G		
Not energy efficient - higher running costs		
England, Scotland & Wales	EU Directive 2002/91/EC	