



Aberdeen Park, London, N5 2BG

Asking Price: £325,000 Share of
Freehold

1 Bedroom | 1 Reception Room | 1 Bathroom

A fantastic, tastefully modernised one bedroom apartment on a beautiful sought after private road in Highbury. The property offers a bright reception with wooden floor, open plan, contemporary kitchen, large double bedroom and modern bathroom.

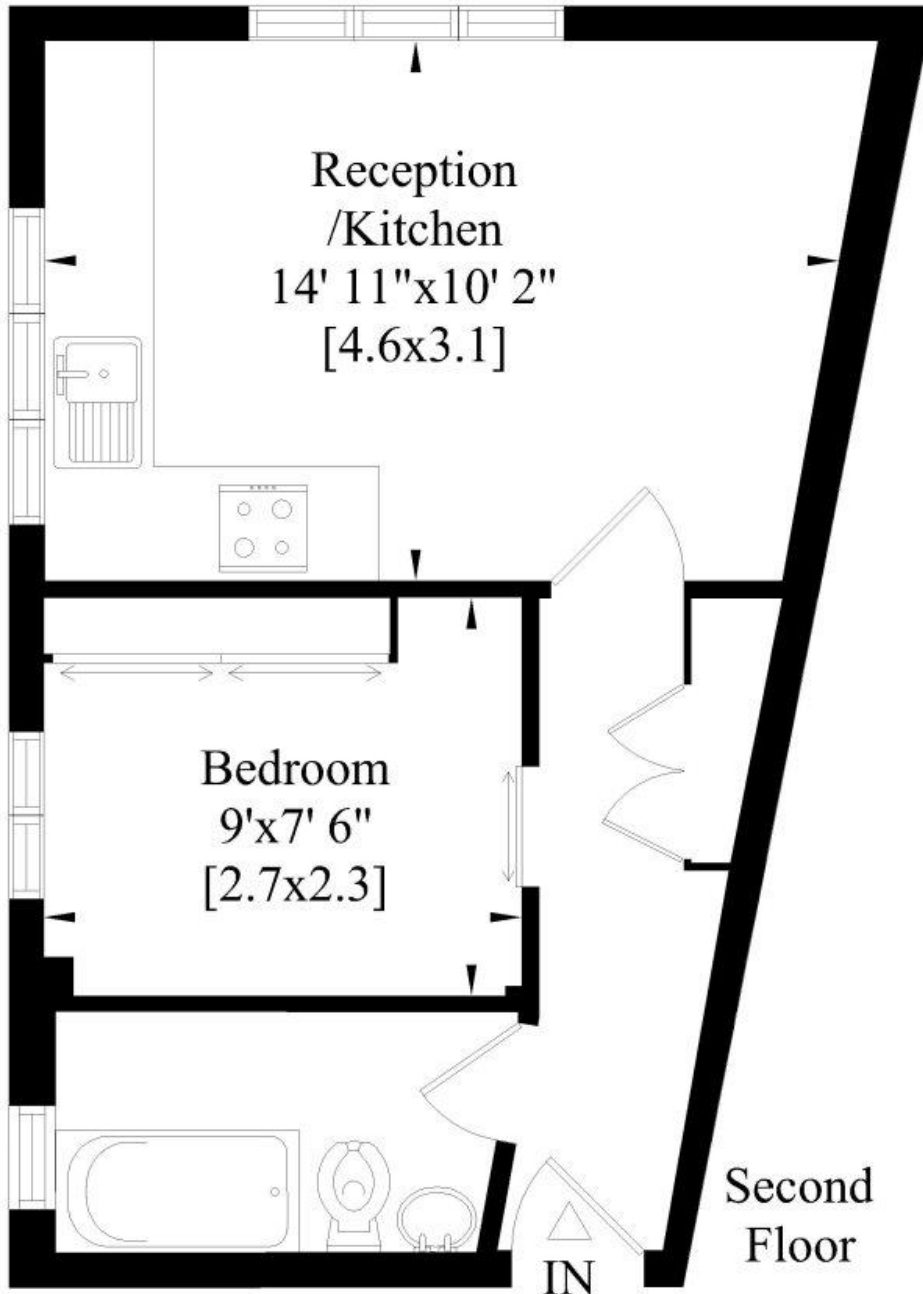
- Share of Freehold 937 years
- Service charge: 3220pa
- EPC: E



Aberdeen Park, London, N5 2BG



Mostyn Lodge N5
Gross Internal Area:
29 Sq. metres
312 Sq. feet



Whilst every attempt has been made to ensure the accuracy of this floor plan, measurements of doors, windows and rooms are approximate. For identification purposes only. Not to scale. © www.steele.london - Email: Info@steele.london - Tel: 07847 219401

Whilst every attempt has been made to ensure the accuracy of the floor plans contained here, measurements of doors, windows and rooms are approximate and no responsibility is taken for any error, omission or mis-statement. These plans are for representation purposes only as defined by RICS Code of Measuring Practice and should be used as such by any prospective purchaser. The services, systems and appliances listed in this specification have not been tested and no guarantee as to their operating ability or their efficiency can be given.

