



Garden Flat, 133 Petherton Road, London, N5 2RS

Asking Price: £750,000 Share of Freehold

2 Total Bedrooms | 1 Reception Room

A charming two-bedroom garden flat on this wide tree lined road in the heart of Highbury, consisting of a private garden approx. 100 feet.

- Beautiful garden flat, lovely condition throughout
- Access from own front door
- Fantastic access to Clissold Park, Stoke Newington Church St as well as Canonbury station, Highbury Fields
- Share of freehold
- Garden Flat

Aprox 100 foot private garden with a shed for storage at the back

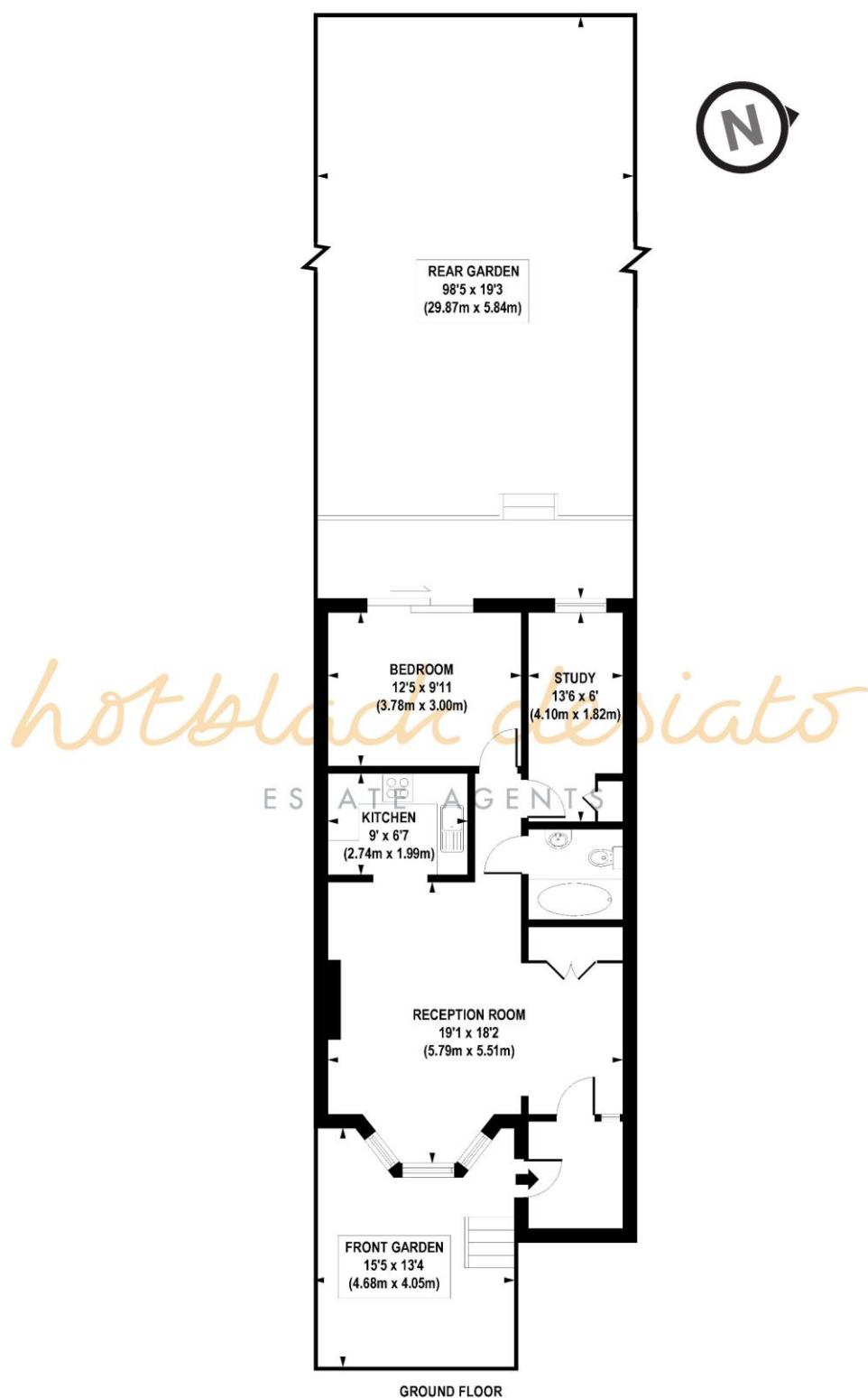


Garden Flat, 133 Petherton Road, London, N5 2RS

It's always lovely to enter a flat from its own front door and in this case, there is then a small lobby which opens into a large sitting room with a bay window.

The kitchen is separate with plenty of storage space. To the rear are the two bedrooms, the larger of the two with doors into the private garden.





APPROX. GROSS INTERNAL FLOOR AREA 677 sq. ft / 62.89 sq. m

Floorplan is for illustrative purposes only and is not to scale.
Every attempt has been made to ensure the accuracy of the floorplan shown, however all measurements, fixtures, fittings and data shown are an approximate interpretation for illustrative purposes only.
Liability for errors, omissions or mis-statement through negligence or otherwise is hereby excluded.

Whilst every attempt has been made to ensure the accuracy of the floor plans contained here, measurements of doors, windows and rooms are approximate and no responsibility is taken for any error, omission or mis-statement. These plans are for representation purposes only as defined by RICS Code of Measuring Practice and should be used as such by any prospective purchaser. The services, systems and appliances listed in this specification have not been tested and no guarantee as to their operating ability or their efficiency can be given.

