



## Plender Street, London, NW1 0LB

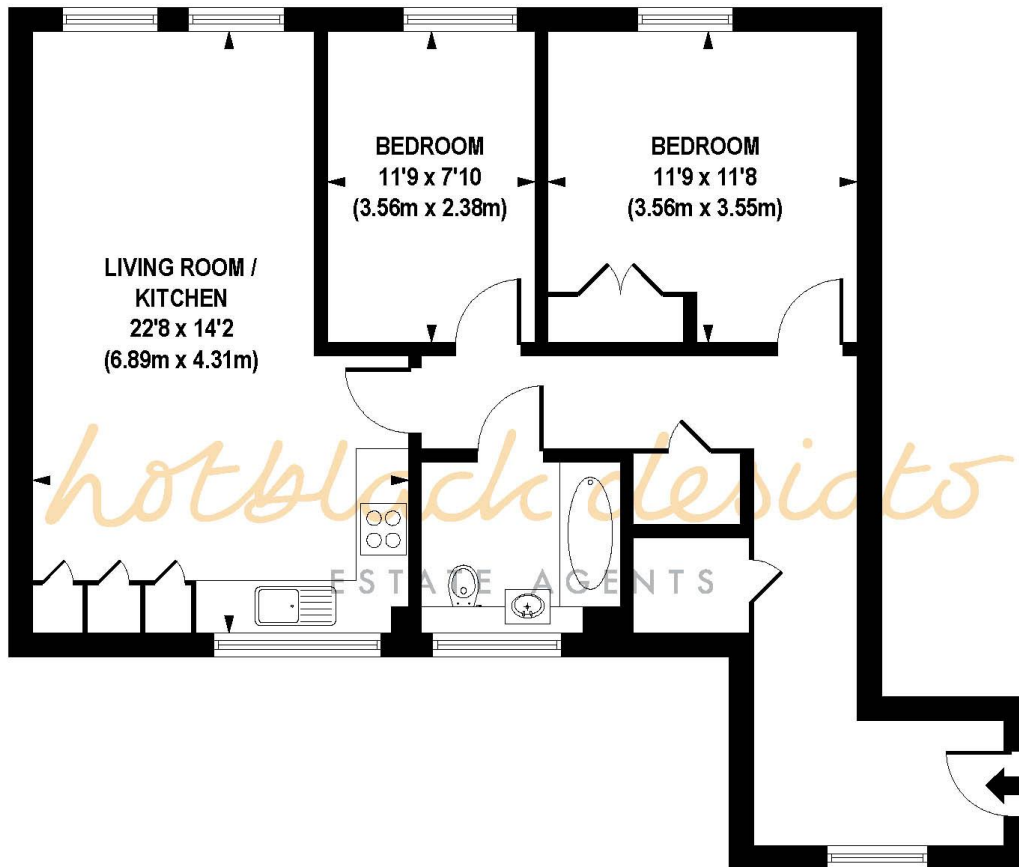
Asking Price: Offers In Excess Of £610,000 Leasehold

### 2 Bedrooms | Open Plan Living Room / Kitchen | 1 Bathroom

A stylish, contemporary designed, 2-bedroom flat on the 2nd floor of a modern purpose-built block. This bright and spacious flat is convenient for Camden High Street, Kings Cross, Granary Square and access into the City and West End. Camden Town and Mornington Crescent tube stations (Northern Line). are a few minutes away.

- Leasehold - 116 years
- 2 Double Bedrooms
- 1 Reception Room
- 1 Bathroom
- Modern Flat/Apartment
- Close to shops and tube
- 759 Approx Sq Ft
- Service charge £2,300 pa





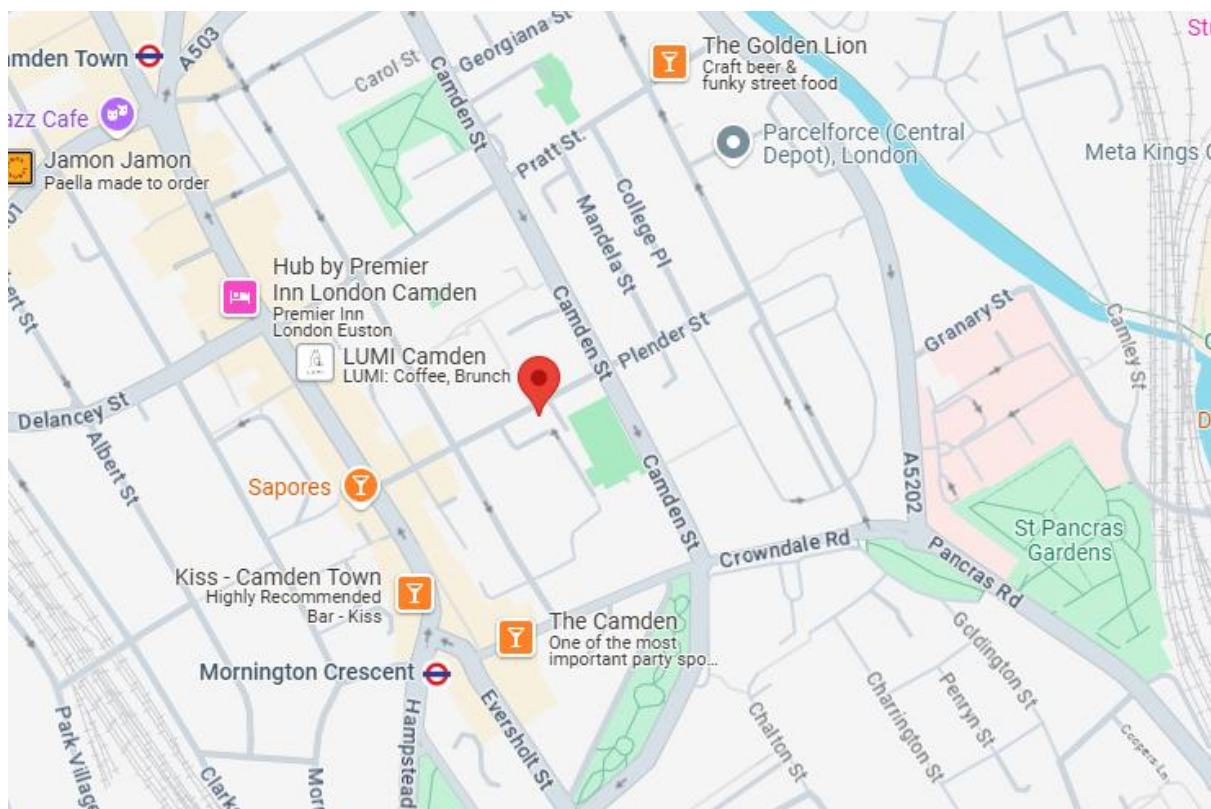
SECOND FLOOR

**APPROX. GROSS INTERNAL FLOOR AREA 759 sq. ft / 70.49 sq. m**

Floorplan is for illustrative purposes only and is not to scale.  
Every attempt has been made to ensure the accuracy of the floorplan shown, however all measurements, fixtures, fittings and data shown are an approximate interpretation for illustrative purposes only.  
Liability for errors, omissions or mis-statement through negligence or otherwise is hereby excluded.

Whilst every attempt has been made to ensure the accuracy of the floor plans contained here, measurements of doors, windows and rooms are approximate and no responsibility is taken for any error, omission or mis-statement. These plans are for representation purposes only as defined by RICS Code of Measuring Practice and should be used as such by any prospective purchaser. The services, systems and appliances listed in this specification have not been tested and no guarantee as to their operating ability or their efficiency can be given.





Score	Energy rating	Current	Potential
92+	A		
81-91	B	87 B	87 B
69-80	C		
55-68	D		
39-54	E		
21-38	F		
1-20	G		