



Lyme Street, Camden, London, NW1 0EH

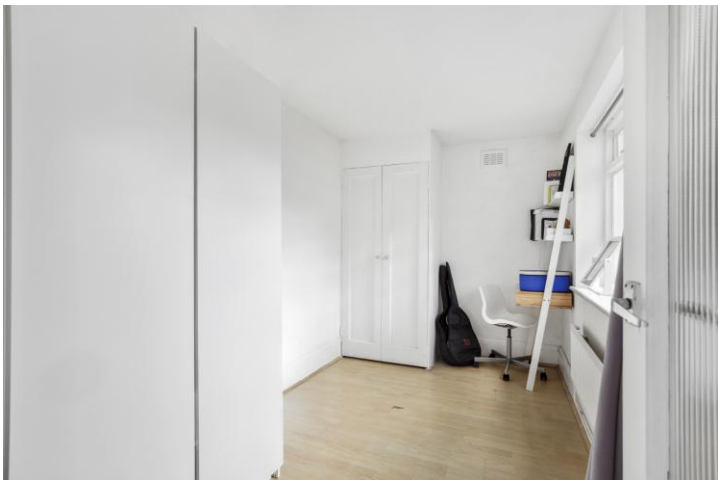
Asking Price: £550,000 Share of Freehold

2 Bedrooms | Open Plan Living/Dining Rooms | 1 Bathroom

A 2-bedroom lower ground floor converted flat in need of some updating. The flat features its own private street entrance and patio garden. Lyme Street is a quiet and desirable turning only minutes from Camden tube and Overground stations and within easy reach of Granary Square, The City & West End.

- Share of Freehold
- 2 Bedrooms
- Open Plan Living/Din Rooms
- Private Street Entrance
- Patio Garden
- Central Location
- Close to Parks and Tube
- Easy Access To City & W. End







LOWER GROUND FLOOR

APPROX. GROSS INTERNAL FLOOR AREA 629 sq. ft / 58.43 sq. m

Floorplan is for illustrative purposes only and is not to scale.
Every attempt has been made to ensure the accuracy of the floorplan shown, however all measurements, fixtures, fittings and data shown are an approximate interpretation for illustrative purposes only.
Liability for errors, omissions or mis-statement through negligence or otherwise is hereby excluded.

Whilst every attempt has been made to ensure the accuracy of the floor plans contained here, measurements of doors, windows and rooms are approximate and no responsibility is taken for any error, omission or mis-statement. These plans are for representation purposes only as defined by RICS Code of Measuring Practice and should be used as such by any prospective purchaser. The services, systems and appliances listed in this specification have not been tested and no guarantee as to their operating ability or their efficiency can be given.

Score	Energy rating	Current	Potential
92+	A		
81-91	B		
69-80	C	75 C	75 C
55-68	D		
39-54	E		
21-38	F		
1-20	G		

