



Highbury New Park, London, N5 2EU

Offers Over: £1,300,000 Share of Freehold

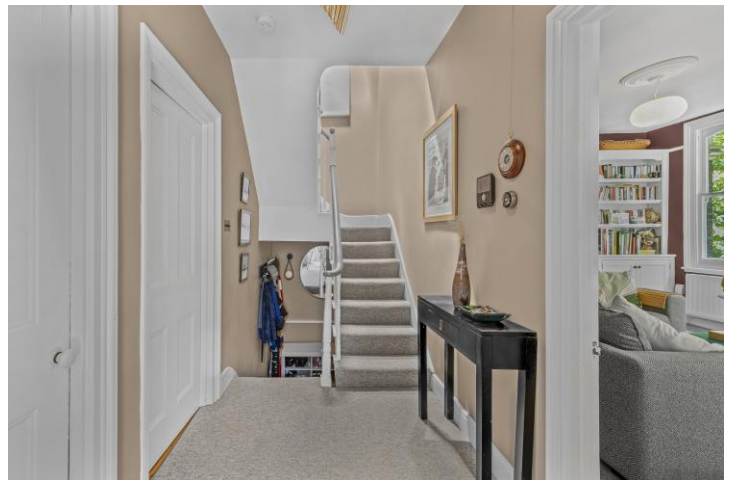
3 Bedrooms | 2 Reception Rooms | 2 Bathrooms

A fabulous, upper split level maisonette across both top floors of a glorious Victorian villa

- Share of Freehold 997 years



Highbury New Park, London, N5 2EU

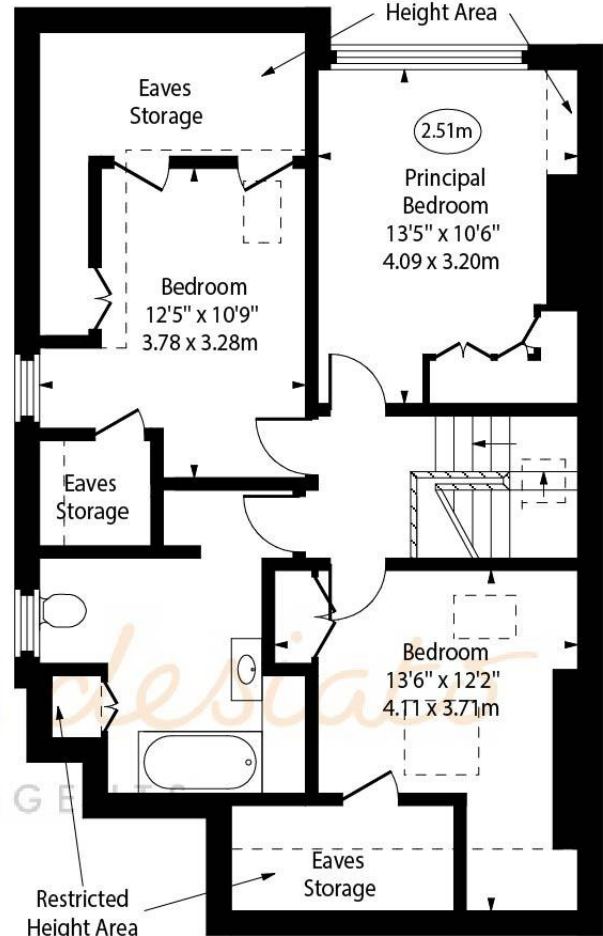


Highbury New Park, N5

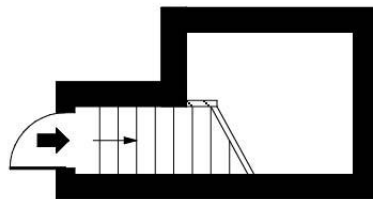
○ - Ceiling Height



Second Floor



Third Floor



First Floor

Approx Gross Internal Area 1437 Sq Ft - 133.50 Sq M

Approx. Floor Area Including Restricted Heights 1570 Sq Ft - 145.85 Sq M

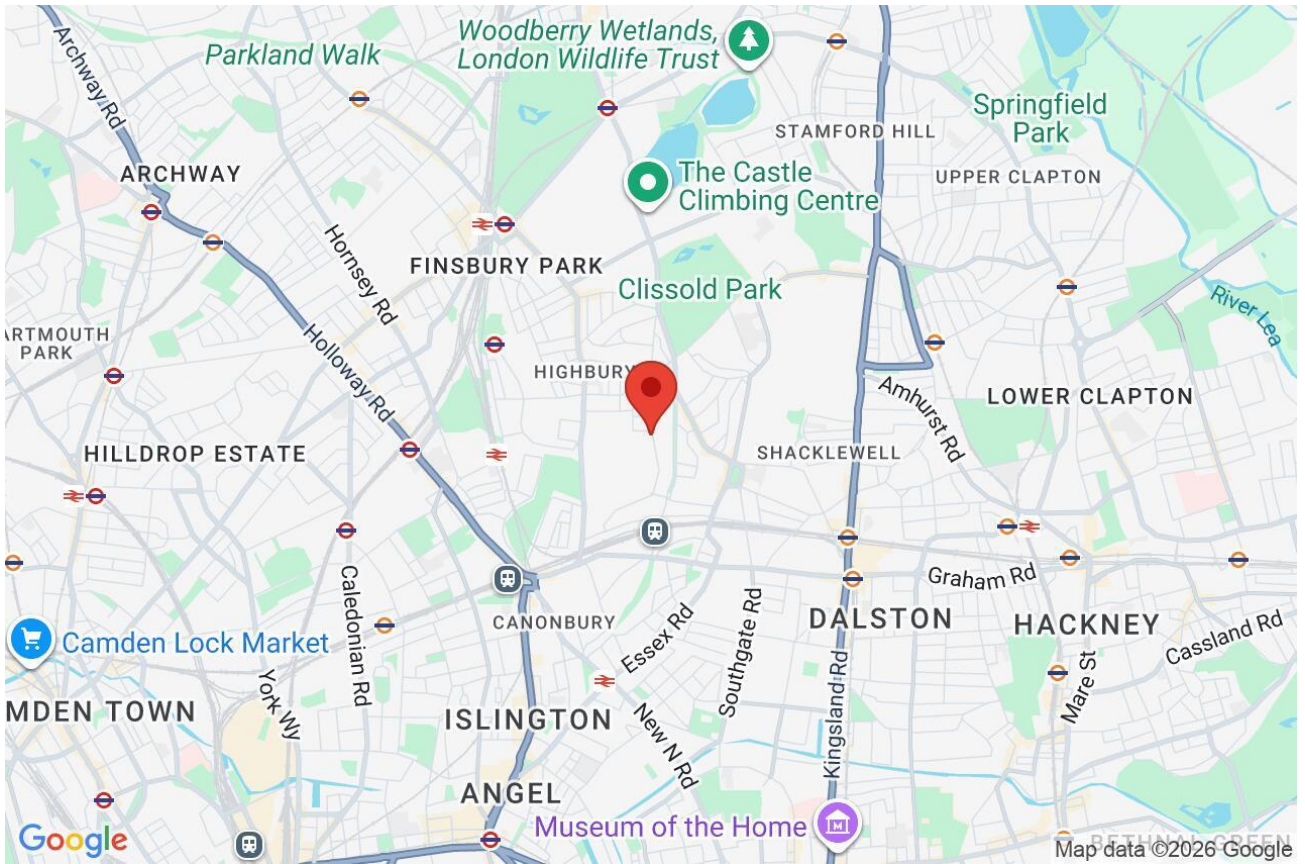
(Including Eaves Storage)

Every attempt has been made to ensure the accuracy of the floor plan shown. However, all measurements, fixtures, fittings, and data shown are approximate interpretations and for illustrative purposes only. Measured according to the RICS. Not To Scale.

www.goldlens.co.uk

Ref. No. 032081E

Whilst every attempt has been made to ensure the accuracy of the floor plans contained here, measurements of doors, windows and rooms are approximate and no responsibility is taken for any error, omission or mis-statement. These plans are for representation purposes only as defined by RICS Code of Measuring Practice and should be used as such by any prospective purchaser. The services, systems and appliances listed in this specification have not been tested and no guarantee as to their operating ability or their efficiency can be given.



Score	Energy rating	Current	Potential
92+	A		
81-91	B		
69-80	C		82 B
55-68	D		
39-54	E	48 E	
21-38	F		
1-20	G		