



Drayton Park, London, N5 1NF

Offers in excess of: £365,000 Leasehold

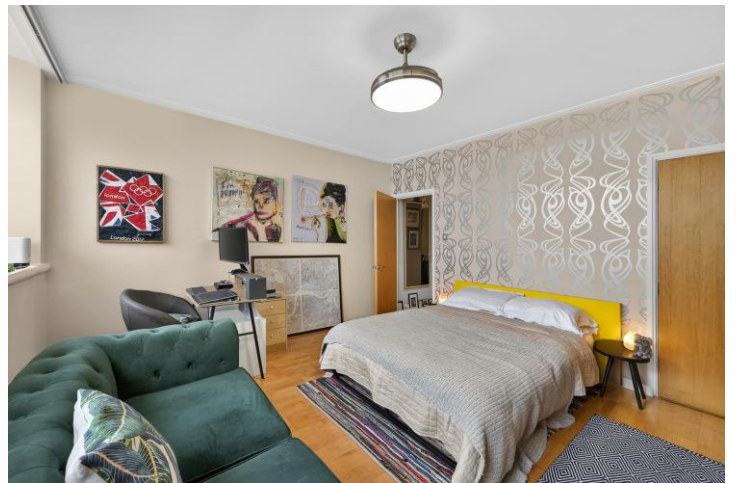
1 Total Bedrooms

A smart first floor flat in this well appointed modern block in Highbury. This flat is peaceful & quiet, also near plenty of convenience shops, gym, and excellent transport links

- Leasehold 973 years 9 months
- Service charge £3,000 pa
- Ground rent £400 pa

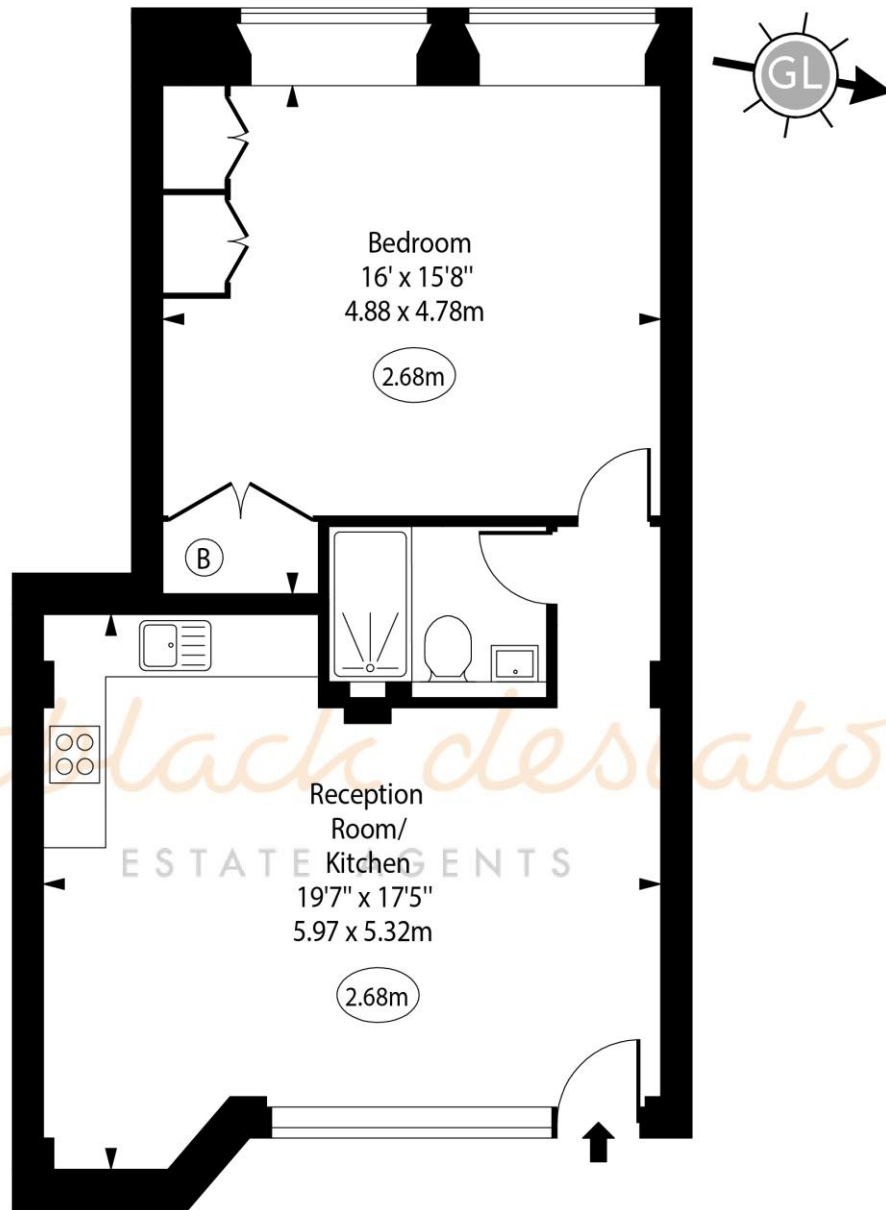


Drayton Park, London, N5 1NF



Drayton Park, N5

○ - Ceiling Height



First Floor

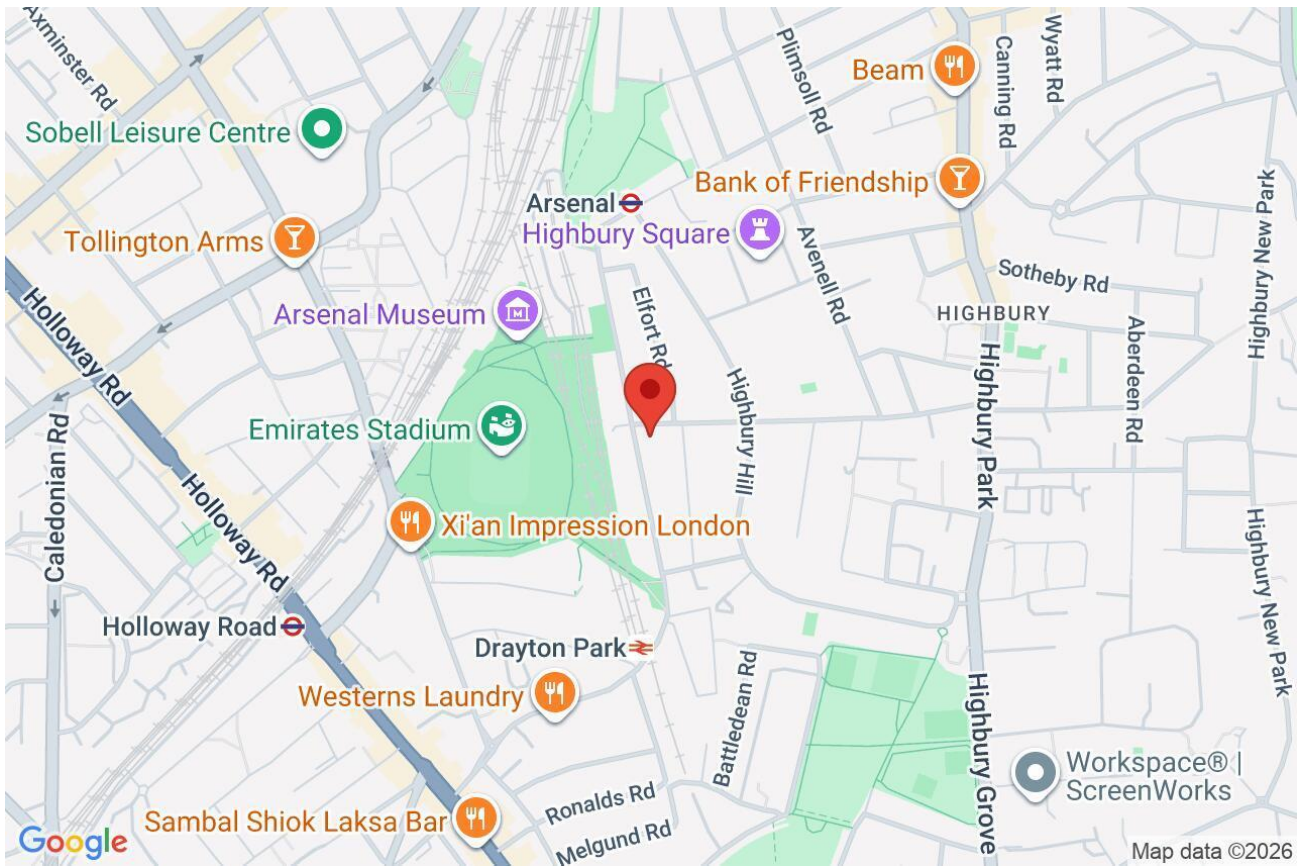
Approx Gross Internal Area 577 Sq Ft - 53.60 Sq M

Every attempt has been made to ensure the accuracy of the floor plan shown. However, all measurements, fixtures, fittings, and data shown are approximate interpretations and for illustrative purposes only. Measured according to the RICS. Not To Scale.

www.goldlens.co.uk

Ref. No. 030822J

Whilst every attempt has been made to ensure the accuracy of the floor plans contained here, measurements of doors, windows and rooms are approximate and no responsibility is taken for any error, omission or mis-statement. These plans are for representation purposes only as defined by RICS Code of Measuring Practice and should be used as such by any prospective purchaser. The services, systems and appliances listed in this specification have not been tested and no guarantee as to their operating ability or their efficiency can be given.



Score	Energy rating	Current	Potential
92+	A		
81-91	B		
69-80	C	80 C	84 B
55-68	D		
39-54	E		
21-38	F		
1-20	G		