



## 133 Highbury New Park, London, N5 2DS

Asking Price: £895,000 Share of Freehold

**2 Total Bedrooms | 2 Reception Rooms | 1  
Bathrooms**

A charming two-bedroom garden apartment set on a picturesque tree-lined road in the heart of Highbury, occupying the raised ground floor of an elegant Victorian residence. The property benefits from a private west-facing garden along with access to a beautifully maintained communal garden, offering a rare combination of outdoor space and period character.

- Share of Freehold 990 years
- Private west-facing garden plus access to a well-maintained communal garden
- Set on a desirable tree-lined road in the heart of Highbury
- Raised ground floor apartment within an elegant Victorian residence





## 133 Highbury New Park, London, N5 2DS

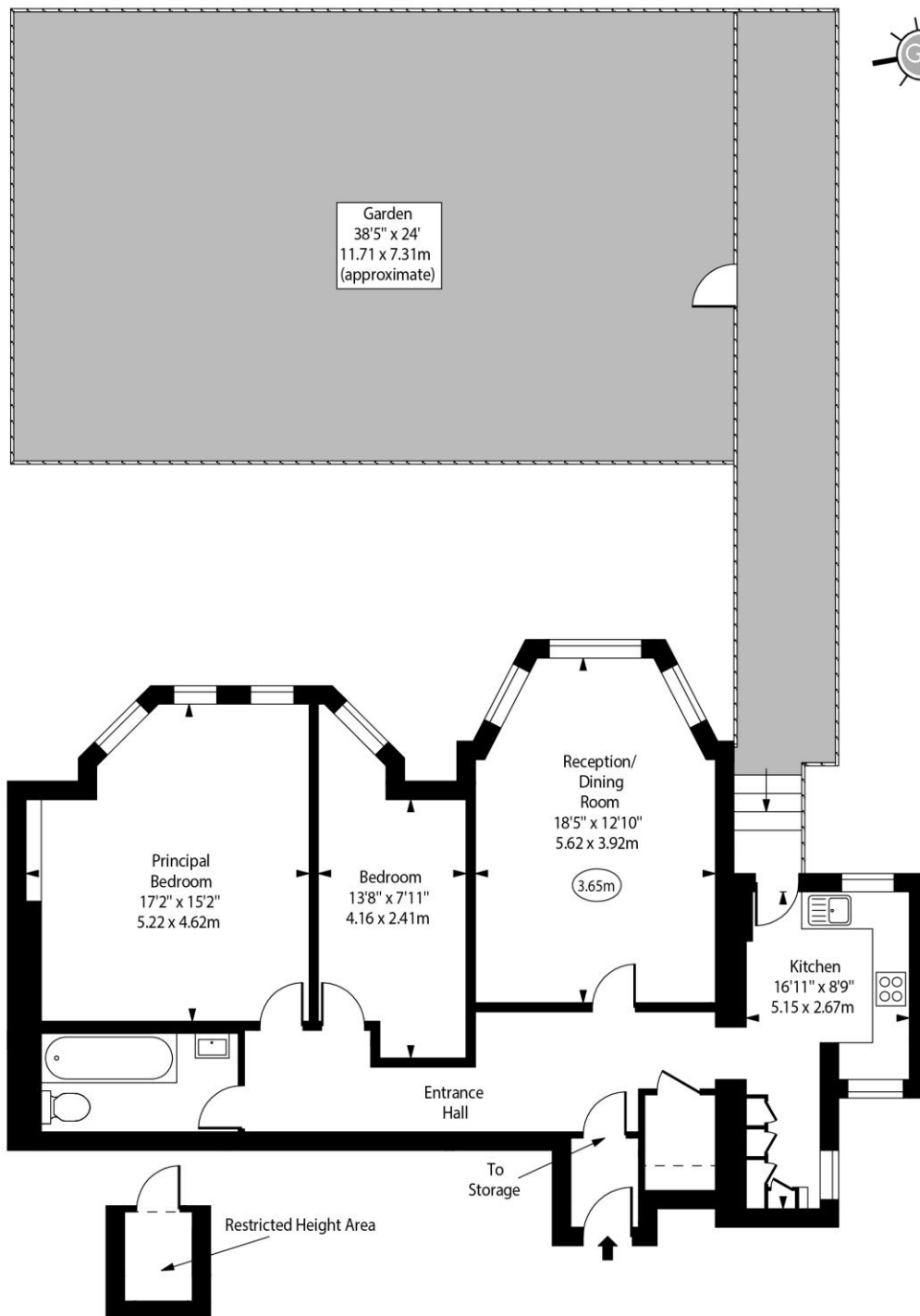
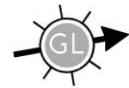
A beautifully presented two-bedroom garden apartment set within a highly desirable Highbury address.

Occupying the raised ground floor of an attractive semi-detached Victorian residence on Highbury New Park, this bright and generously proportioned home combines classic period charm with modern comfort. Original features include hardwood flooring and traditional shutters, while the accommodation comprises an impressive reception room with a large bay window, a spacious principal bedroom also featuring a bay window, a second bedroom, a contemporary bathroom with shower over bath, and a separate fitted kitchen with integrated appliances.



# Highbury New Park, N5

○ - Ceiling Height



Storage  
Above The Entrance

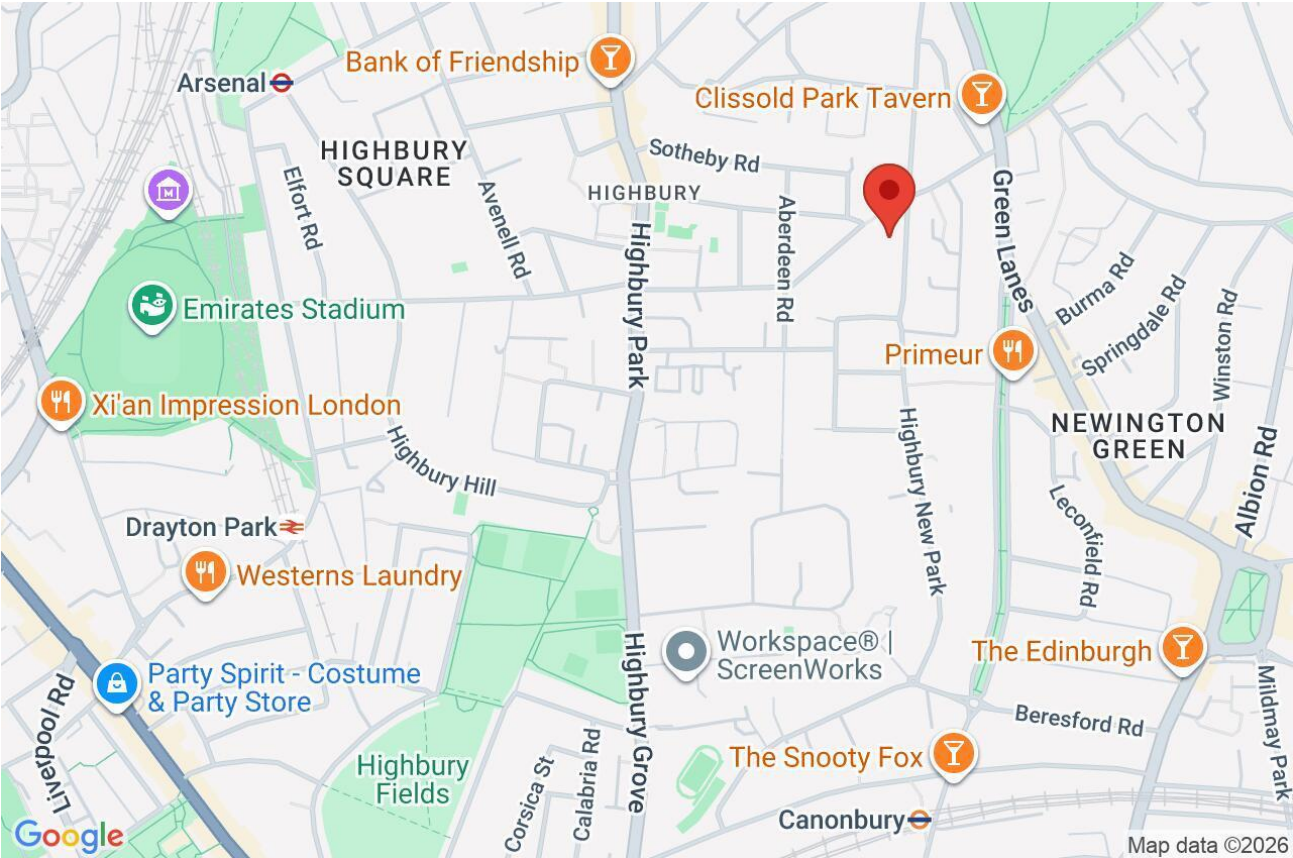
Raised Ground Floor

Approx Gross Internal Area 956 Sq Ft - 88.81 Sq M  
(Excluding Storage)

Every attempt has been made to ensure the accuracy of the floor plan shown.  
However, all measurements, fixtures, fittings, and data shown are approximate interpretations and  
for illustrative purposes only. Measured according to the RICS. Not To Scale.  
[www.goldlens.co.uk](http://www.goldlens.co.uk)  
Ref. No. 030556A

Whilst every attempt has been made to ensure the accuracy of the floor plans contained here, measurements of doors, windows and rooms are approximate and no responsibility is taken for any error, omission or mis-statement. These plans are for representation purposes only as defined by RICS Code of Measuring Practice and should be used as such by any prospective purchaser. The services, systems and appliances listed in this specification have not been tested and no guarantee as to their operating ability or their efficiency can be given.





Score	Energy rating	Current	Potential
92+	A		
81-91	B		
69-80	C		79 C
55-68	D	63 D	
39-54	E		
21-38	F		
1-20	G		