



178A, Downham Road, London, N1 3HL

Asking Price: £925,000 Leasehold

3 Total Bedrooms | 2 Bathrooms

A well-appointed 3/4-bedroom upper split-level maisonette located over the upper floors of a converted Victorian house. Situated in a peaceful Islington cul-de-sac, offering a private garden this property has heaps of potential.

- Upper Split-level maisonette
- 3 Total Bedrooms
- Private garden
- Period garden flat

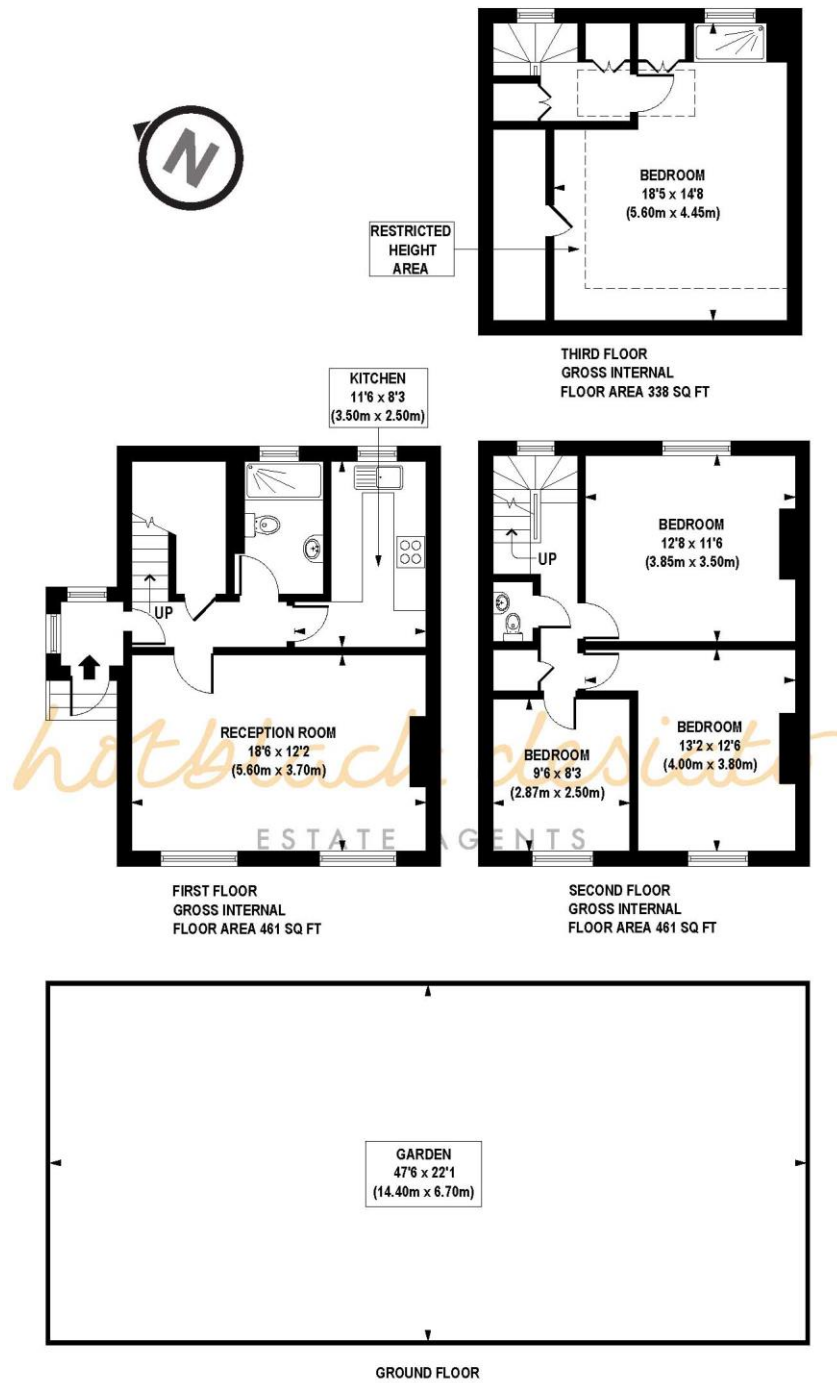


178A, Downham Road, London, N1 3HL

This dwelling is arranged over the upper floors of a converted Victorian house, located in a peaceful cul-de-sac in De Beauvoir. Presented with period features throughout, a split level three/four-bedroom apartment enjoying a large double fronted living area plus a private garden.

This property has a wealth of shops and amenities nearby as well as gyms, theatres and parks. The





APPROX. GROSS INTERNAL FLOOR AREA 1259 sq. ft / 116.99 sq. m (Including Restricted Height Area)
APPROX. GROSS INTERNAL FLOOR AREA 1164 sq. ft / 108.12 sq. m (Excluding Restricted Height Area)

Floorplan is for illustrative purposes only and is not to scale.
 Every attempt has been made to ensure the accuracy of the floorplan shown, however all measurements, fixtures, fittings and data shown are an approximate interpretation for illustrative purposes only.
 Liability for errors, omissions or mis-statement through negligence or otherwise is hereby excluded.

Whilst every attempt has been made to ensure the accuracy of the floor plans contained here, measurements of doors, windows and rooms are approximate and no responsibility is taken for any error, omission or mis-statement. These plans are for representation purposes only as defined by RICS Code of Measuring Practice and should be used as such by any prospective purchaser. The services, systems and appliances listed in this specification have not been tested and no guarantee as to their operating ability or their efficiency can be given.

