



## Plimsoll Road, London, N4 2EN

### 5 Total Bedrooms | 4 Reception Rooms

Perfectly situated and generously proportioned, this mid-terraced five double bedroom, four-bathroom house is positioned on the ever-popular Plimsoll Road, N4. This spacious property, spanning over 2100 square feet, offers a perfect blend of period charm and modern comfort.

- Double through reception
- 5 Total Bedrooms
- approx. 2100 square feet
- Catchment area
- Terraced Freehold



## 43 Plimsoll Road, London, N4 2EN

An outstanding family home, presented in a tasteful, contemporary and bespoke style.

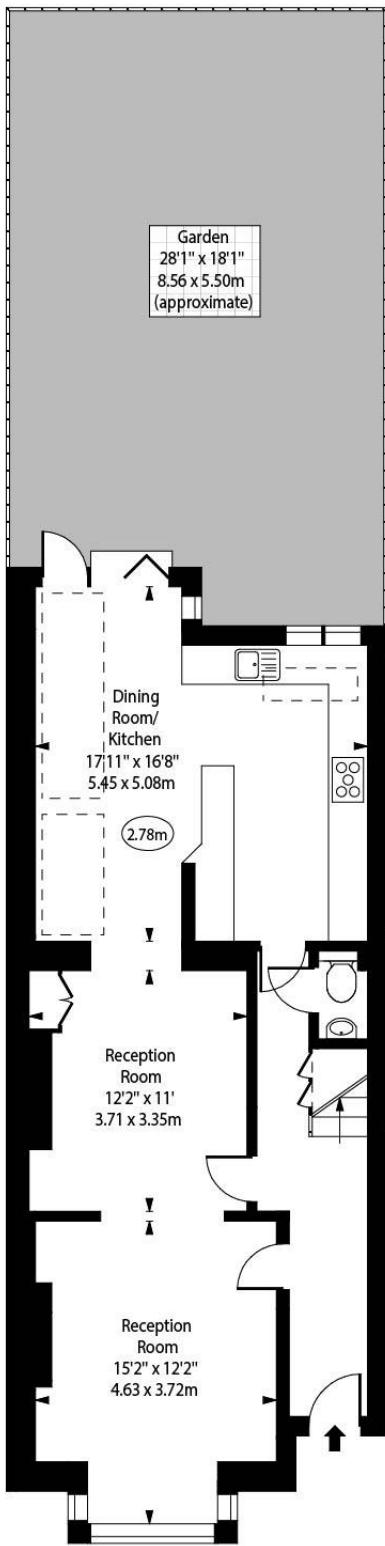
Step into this beautifully renovated 5-bedroom home on Plimsoll Road. This spacious property, spanning over 2100 square feet, offers a perfect blend of period charm and modern comfort.



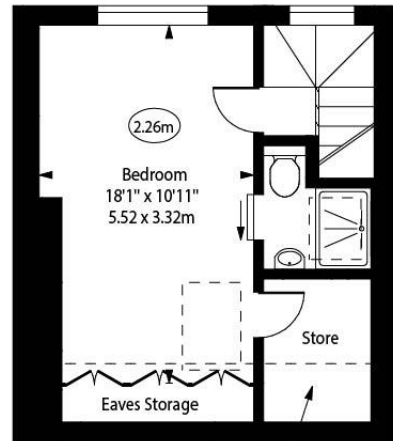
Plimsoll Road, N4



○ - Ceiling Height

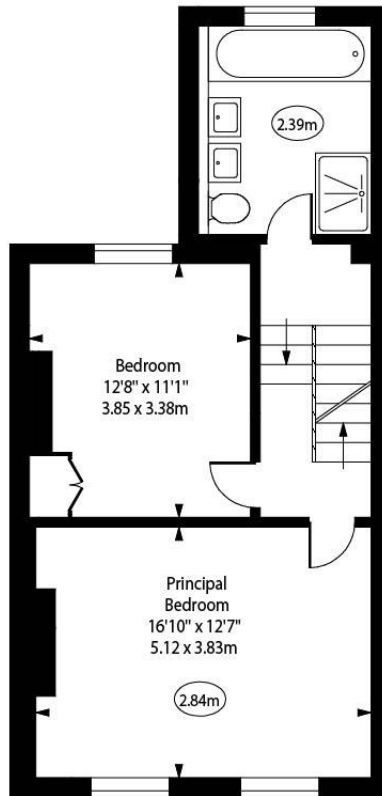


Ground Floor

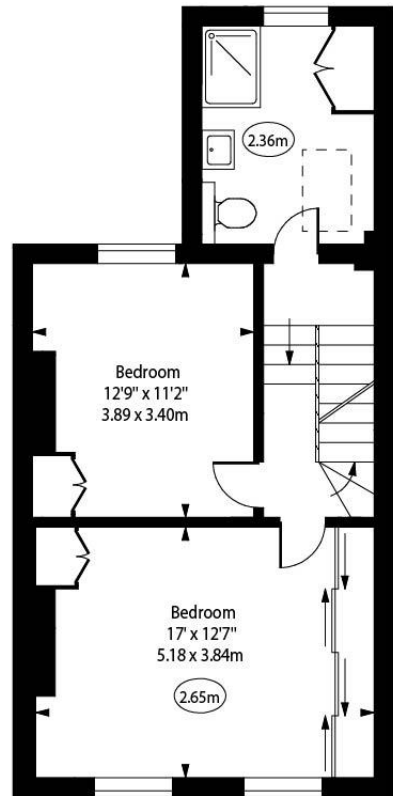


Restricted Height Area

Third Floor



First Floor



Second Floor

Approx Gross Internal Area 2095 Sq Ft - 194.63 Sq M

Approx. Floor Area Including Restricted Heights 2142 Sq Ft - 199.00 Sq M  
(Including Eaves Storage)

For Illustration Purposes Only - Not To Scale  
www.goldlens.co.uk  
Ref. No. 025486J

Whilst every attempt has been made to ensure the accuracy of the floor plans contained here, measurements of doors, windows and rooms are approximate and no responsibility is taken for any error, omission or mis-statement. These plans are for representation purposes only as defined by RICS Code of Measuring Practice and should be used as such by any prospective purchaser. The services, systems and appliances listed in this specification have not been tested and no guarantee as to their operating ability or their efficiency can be given.

