



## Highbury Grange, London, N5 2QF

Asking Price: £650,000 Leasehold

**2 Total Bedrooms | 1 Reception Room | 1 Bathroom**

Stunning, top floor apartment with panoramic views of London skyline

- Two bedroom penthouse apartment in the heart of Highbury, breathtaking views
- Bright and peaceful throughout, simple minimal decor and styling
- Leasehold, service charges £3500pa inc. heating & hot water
- Excellent transport links via Finsbury Park, Highbury & Islington
- Close to Highbury Fields and Clissold Park

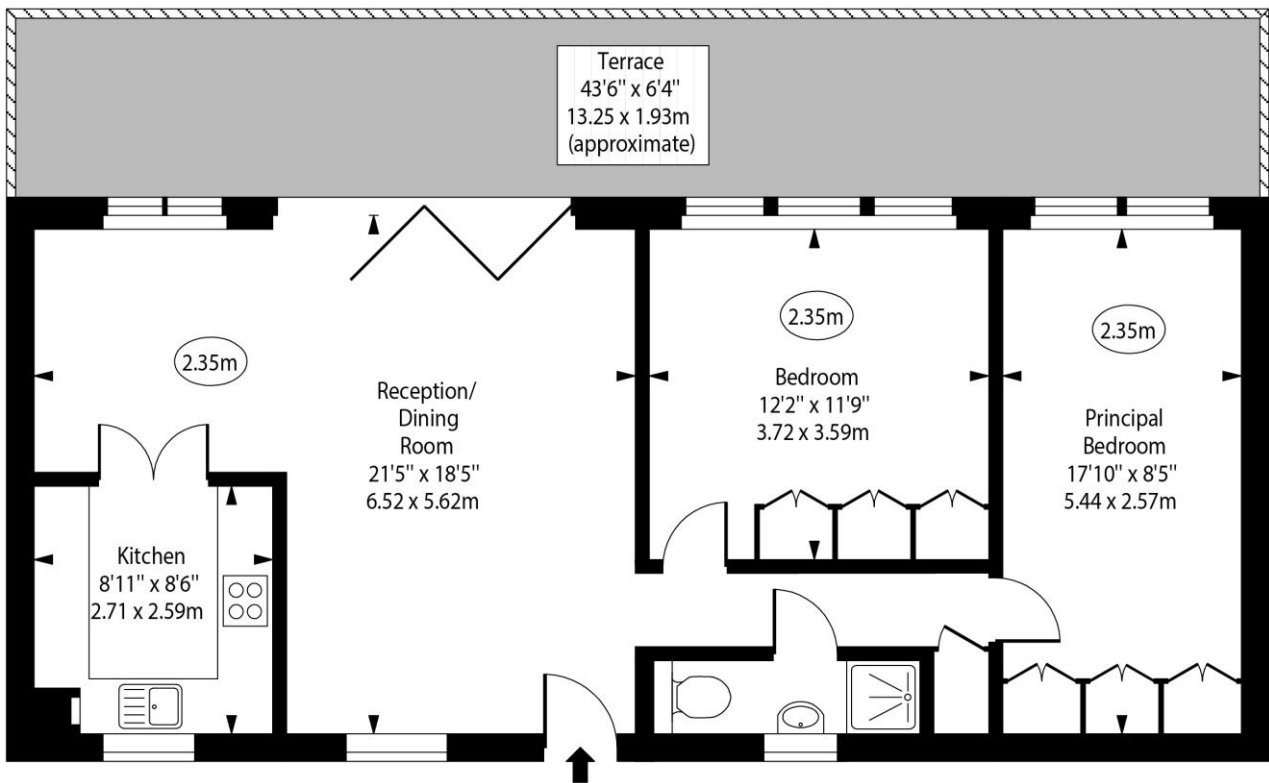
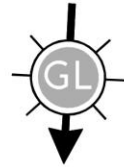


# Highbury Grange, London, N5 2QF



Woodstock House,  
Highbury Grange, N5

○ - Ceiling Height



Fifth Floor

Approx Gross Internal Area 780 Sq Ft - 72.46 Sq M

For Illustration Purposes Only - Not To Scale

[www.goldlens.co.uk](http://www.goldlens.co.uk)

Ref. No. 026275R

Whilst every attempt has been made to ensure the accuracy of the floor plans contained here, measurements of doors, windows and rooms are approximate and no responsibility is taken for any error, omission or mis-statement. These plans are for representation purposes only as defined by RICS Code of Measuring Practice and should be used as such by any prospective purchaser. The services, systems and appliances listed in this specification have not been tested and no guarantee as to their operating ability or their efficiency can be given.

