



Stoke Newington Church Street, London, N16 0AS

Offers Over: £650,000 Leasehold

2 Bedrooms | 2 Reception Rooms | 1 Bathroom

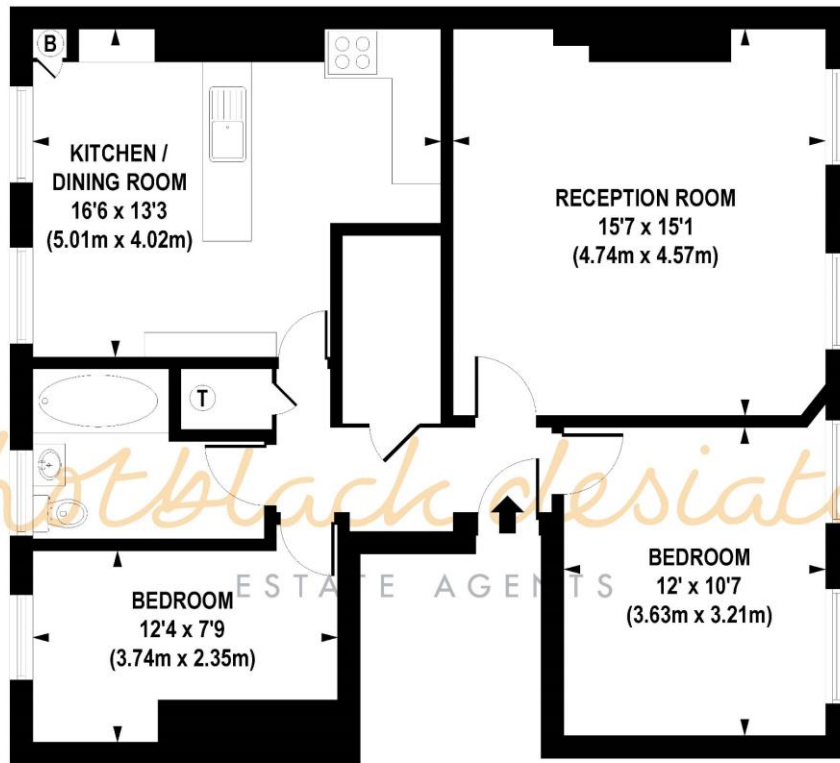
A fantastic, bright and spacious lateral two bedroom apartment on the top floor overlooking Stoke Newington Church Street.

- Bright, airy double aspect top floor apartment with study as well as living room and kitchen diner
- Lateral accommodation, no wasted space, spanning over 800 sq ft
- Potential to re-config and add another bathroom STP
- Prime Church St location, near Clissold Park



93b Stoke Newington Church Street, London, N16 0AS





SECOND FLOOR

APPROX. GROSS INTERNAL FLOOR AREA 828 sq. ft / 76.89 sq. m

Floorplan is for illustrative purposes only and is not to scale.
Every attempt has been made to ensure the accuracy of the floorplan shown, however all measurements, fixtures, fittings and data shown are an approximate interpretation for illustrative purposes only.
Liability for errors, omissions or mis-statement through negligence or otherwise is hereby excluded.

Whilst every attempt has been made to ensure the accuracy of the floor plans contained here, measurements of doors, windows and rooms are approximate and no responsibility is taken for any error, omission or mis-statement. These plans are for representation purposes only as defined by RICS Code of Measuring Practice and should be used as such by any prospective purchaser. The services, systems and appliances listed in this specification have not been tested and no guarantee as to their operating ability or their efficiency can be given.

