



## 27d Highbury Park, London, N5 1TH

Offers over: £900,000 Share of Freehold

**2 Bedrooms | 1 Reception Room | 2 Bathrooms**

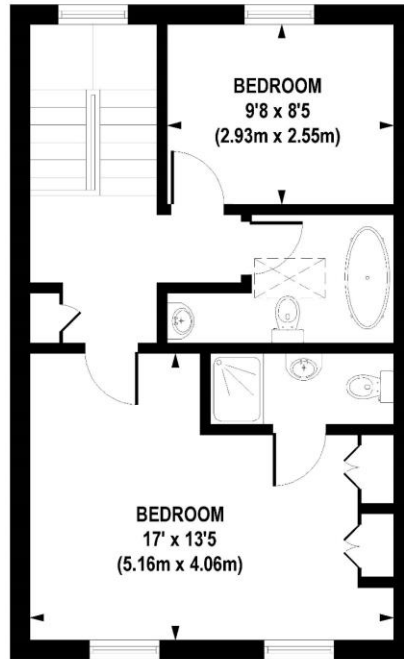
A well appointed upper split-level maisonette in this popular Georgian terrace. Set back from the road behind a screen of evergreen trees, this lovely two storey apartment is flooded with natural light, and at over 1000 sq ft, is extremely spacious.

- Split level flat in highly sought after Georgian conversion close to Highbury Barn
- High ceilings, period features, beautifully presented throughout
- Private road with two resident's parking permits
- En suite to main bedroom, stand alone Victorian-style bath tub in main bathroom



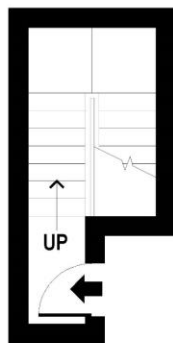
# Highbury Park, London, N5 1TH



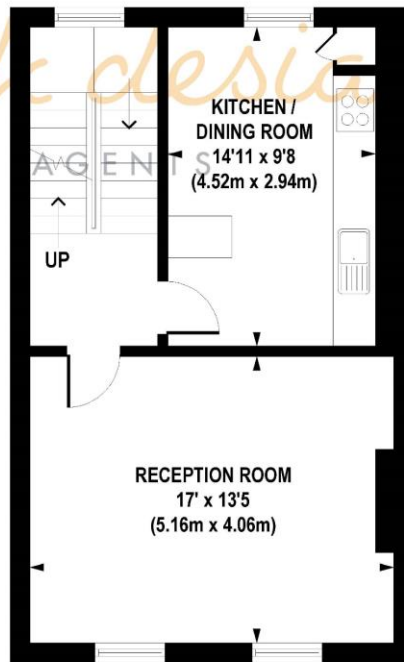


THIRD FLOOR  
GROSS INTERNAL  
FLOOR AREA 485 SQ FT

*hotblack designs*  
ESTATE AGENTS



FIRST FLOOR  
GROSS INTERNAL  
FLOOR AREA 65 SQ FT



SECOND FLOOR  
GROSS INTERNAL  
FLOOR AREA 485 SQ FT

**APPROX. GROSS INTERNAL FLOOR AREA 1035 sq. ft / 96.19 sq. m**

Floorplan is for illustrative purposes only and is not to scale.  
Every attempt has been made to ensure the accuracy of the floorplan shown, however all measurements, fixtures, fittings and data shown are an approximate interpretation for illustrative purposes only.  
Liability for errors, omissions or mis-statement through negligence or otherwise is hereby excluded.

Whilst every attempt has been made to ensure the accuracy of the floor plans contained here, measurements of doors, windows and rooms are approximate and no responsibility is taken for any error, omission or mis-statement. These plans are for representation purposes only as defined by RICS Code of Measuring Practice and should be used as such by any prospective purchaser. The services, systems and appliances listed in this specification have not been tested and no guarantee as to their operating ability or their efficiency can be given.

