



9b, Wharfdale Road, London, N1 9SB

Asking Price: £725,000 Leasehold

2 Total Bedrooms | 1 Bathroom

A bright, light and spacious two-bedroom, split level maisonette in moments away from Kings Cross station.

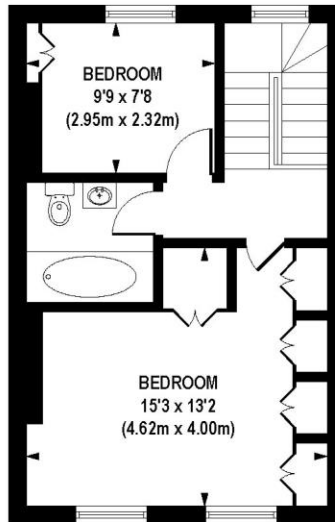
- Excellent location moments from Kings Cross station
- Bright, spacious upper maisonette on a quiet street
- Chain free
- Period property with modern twist
- Upper floors



9b, Wharfdale Road, London, N1 9SB

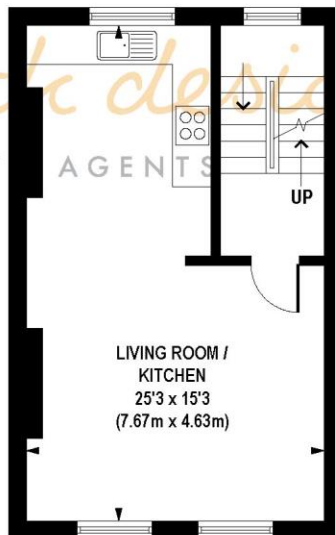
A beautiful two-bedroom upper maisonette arranged over the top floors of this charming period property on this quiet and sought after street, moments away from Kings Cross station. Offering approximately 780 sqf of accommodation, this property comprises a large and bright open plan kitchen/living room complete with two bedrooms and a family bathroom.



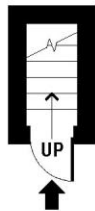


SECOND FLOOR
GROSS INTERNAL
FLOOR AREA 379 SQ FT

hotblack deposits
ESTATE AGENTS



FIRST FLOOR
GROSS INTERNAL
FLOOR AREA 385 SQ FT



GROUND FLOOR
GROSS INTERNAL
FLOOR AREA 14 SQ FT

APPROX. GROSS INTERNAL FLOOR AREA 778 sq. ft / 72.26 sq. m

Floorplan is for illustrative purposes only and is not to scale.
Every attempt has been made to ensure the accuracy of the floorplan shown, however all measurements, fixtures, fittings and data shown are an approximate interpretation for illustrative purposes only.
Liability for errors, omissions or mis-statement through negligence or otherwise is hereby excluded.

Whilst every attempt has been made to ensure the accuracy of the floor plans contained here, measurements of doors, windows and rooms are approximate and no responsibility is taken for any error, omission or mis-statement. These plans are for representation purposes only as defined by RIICS Code of Measuring Practice and should be used as such by any prospective purchaser. The services, systems and appliances listed in this specification have not been tested and no guarantee as to their operating ability or their efficiency can be given.

