



Montanaro Court, Coleman Fields, Islington N1 7AD

Asking Price: £675,000 Leasehold

- Chic brutalist/ industrial vibe with floor to ceiling windows, polished concrete ceilings
- Arlington Square location – quiet, but great access to Angel, Shoreditch, Old Street & the City
- Floor to ceiling Crittal style windows; bright and light throughout
- Leasehold: TBC years
- Service charge: TBC
- Ground rent: TBC



Montanaro Court, Coleman Fields, Islington, London, N1 7AD

Stylish and modern, this first floor flat is offered for sale with no onward chain in the heart of Islington. Sporting floor to ceiling windows, polished concrete ceilings, and very chic mid-mod styling, this dwelling will suit a young professional/ couple perfectly.



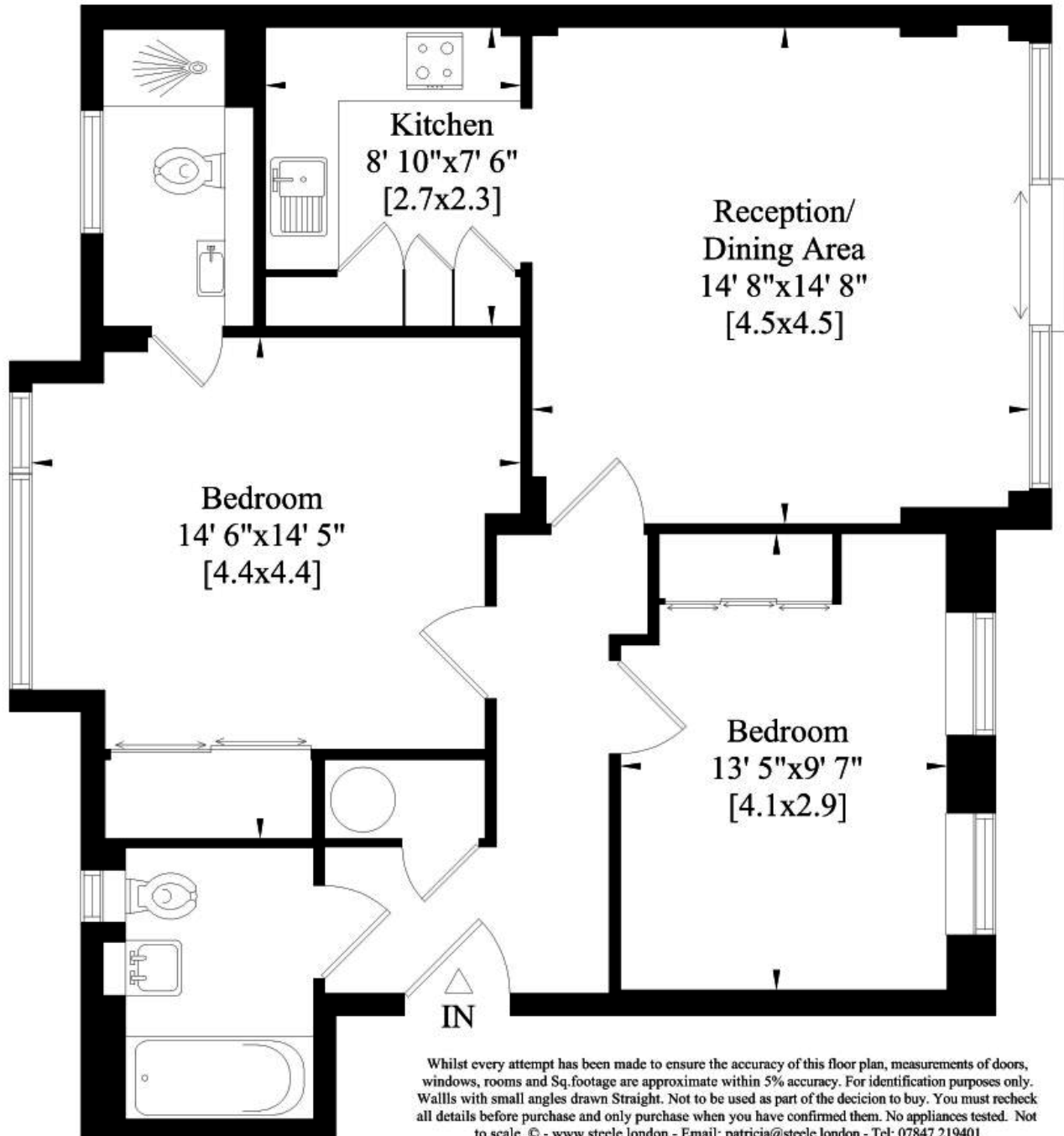
Montanaro Court N1

Gross Internal Area:

73 Sq. metres

788 Sq. feet

First
Floor



Whilst every attempt has been made to ensure the accuracy of the floor plans contained here, measurements of doors, windows and rooms are approximate and no responsibility is taken for any error, omission or mis-statement. These plans are for representation purposes only as defined by RICS Code of Measuring Practice and should be used as such by any prospective purchaser. The services, systems and appliances listed in this specification have not been tested and no guarantee as to their operating ability or their efficiency can be given.

