



Peckett Square, Highbury Grange, N5 2PB

Asking Price: £400,000 Leasehold

1 Bedroom | 1 Reception Room | 1 Bathroom

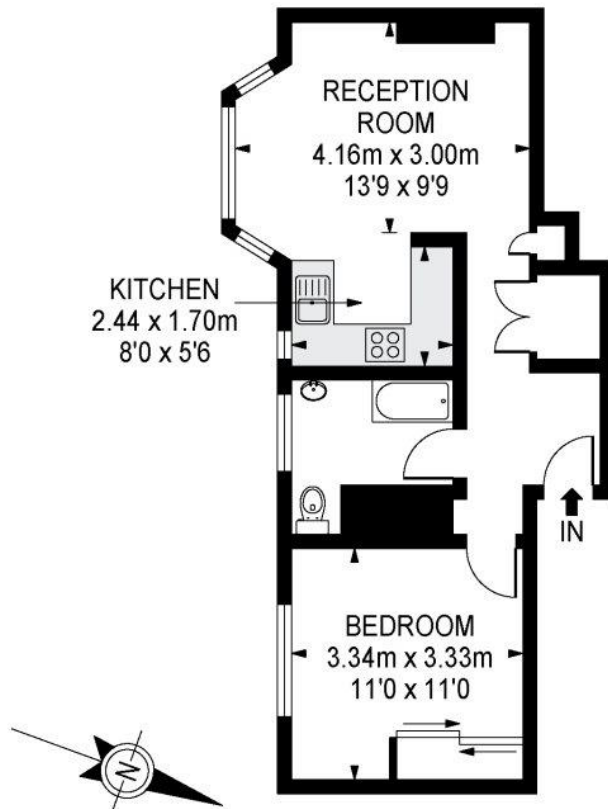
An exceptional one bedroom apartment within this red brick development in the heart of Highbury.

The property has been finished to a very good standard throughout and offers 446 sq. ft/ 41 sq. meters of accommodation comprising a lovely reception room with wooden flooring leading onto a modern fitted kitchen, a large and bright double bedroom with built in wardrobes and contemporary bathroom suite.

- Leasehold 176 years
- Service charge: £1453 per annum
- Ground rent: £10 per annum
- EPC - E



Peckett Square



2nd Floor

APPROX GROSS INTERNAL FLOOR AREA 446.60 SQ FT - 41.49 SQ M

Whilst every attempt has been made to ensure the accuracy of the floor plan contained here, measurements of doors, windows, rooms and any other items are approximates and no responsibility is taken for any error, omission or mis-statement. This plan is for illustrative purposes only and should be used as such by any prospective purchaser. The service, system and appliances shown have not been tested and no guarantee as to their operability or efficiency can be given.

**© SpacePhoto
Photography and Floor Plan**

Whilst every attempt has been made to ensure the accuracy of the floor plans contained here, measurements of doors, windows and rooms are approximate and no responsibility is taken for any error, omission or mis-statement. These plans are for representation purposes only as defined by RICS Code of Measuring Practice and should be used as such by any prospective purchaser. The services, systems and appliances listed in this specification have not been tested and no guarantee as to their operating ability or their efficiency can be given.

