



Southstand Apartments, Highbury Stadium Square, London, N5 1FB

Asking Price: £750,000 Leasehold

2 Total Bedrooms | 1 Reception Rooms

Over 900 sq ft, a stunning double aspect apartment with private parking space and terrace in the sought after Stadium development

- Leasehold 109 years
- 2 Total Bedrooms
- 1 Reception Rooms
- Flat/Apartment
- Ground Floor
- Balcony
- Resident Parking
- Off Street Parking

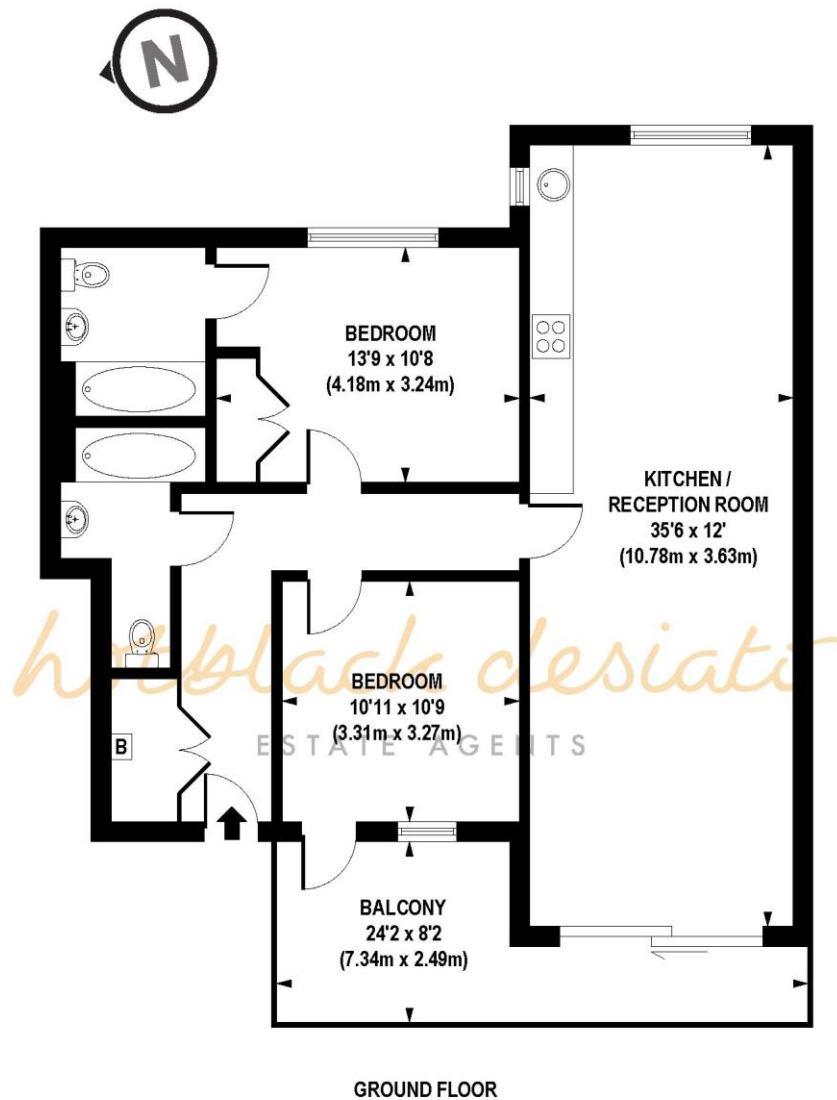


Southstand Apartments, Highbury Stadium Square, London,

This spacious, bright flat is offered for sale in a quiet corner of the vibrant Highbury Stadium development.

Larger than most, this lovely dwelling is double aspect spanning the whole floor area of the courtyard building in Southstand. This means that there are windows both sides of the apartment making it





APPROX. GROSS INTERNAL FLOOR AREA 946 sq. ft / 87.92 q. m

Floorplan is for illustrative purposes only and is not to scale.
 Every attempt has been made to ensure the accuracy of the floorplan shown, however all measurements, fixtures, fittings and data shown are an approximate interpretation for illustrative purposes only.
 Liability for errors, omissions or mis-statement through negligence or otherwise is hereby excluded.

Whilst every attempt has been made to ensure the accuracy of the floor plans contained here, measurements of doors, windows and rooms are approximate and no responsibility is taken for any error, omission or mis-statement. These plans are for representation purposes only as defined by RICS Code of Measuring Practice and should be used as such by any prospective purchaser. The services, systems and appliances listed in this specification have not been tested and no guarantee as to their operating ability or their efficiency can be given.

