



Flat 42, Terrace Apartments, 40 Drayton Park, Highbury, London, N5 1PW

Asking Price: £375,000 Leasehold

**1 Total Bedroom | 1 Reception Room | 1
Bathroom**

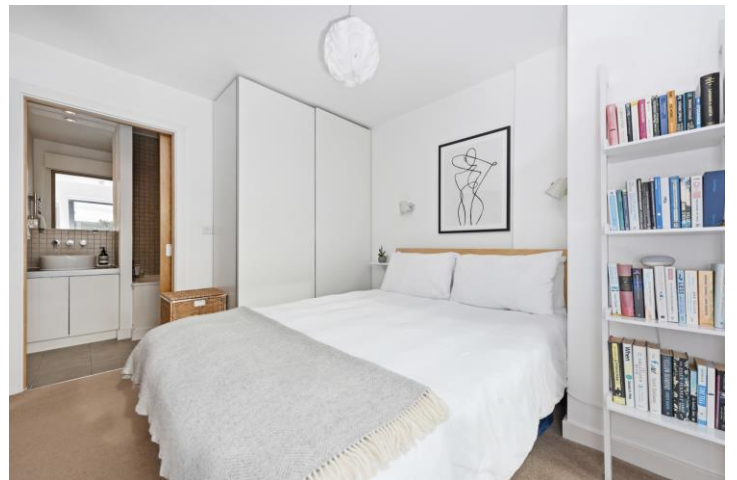
This bright and airy, smart executive one-bedroom apartment is located centrally in the Highbury area, affording excellent transport links as well as very secure

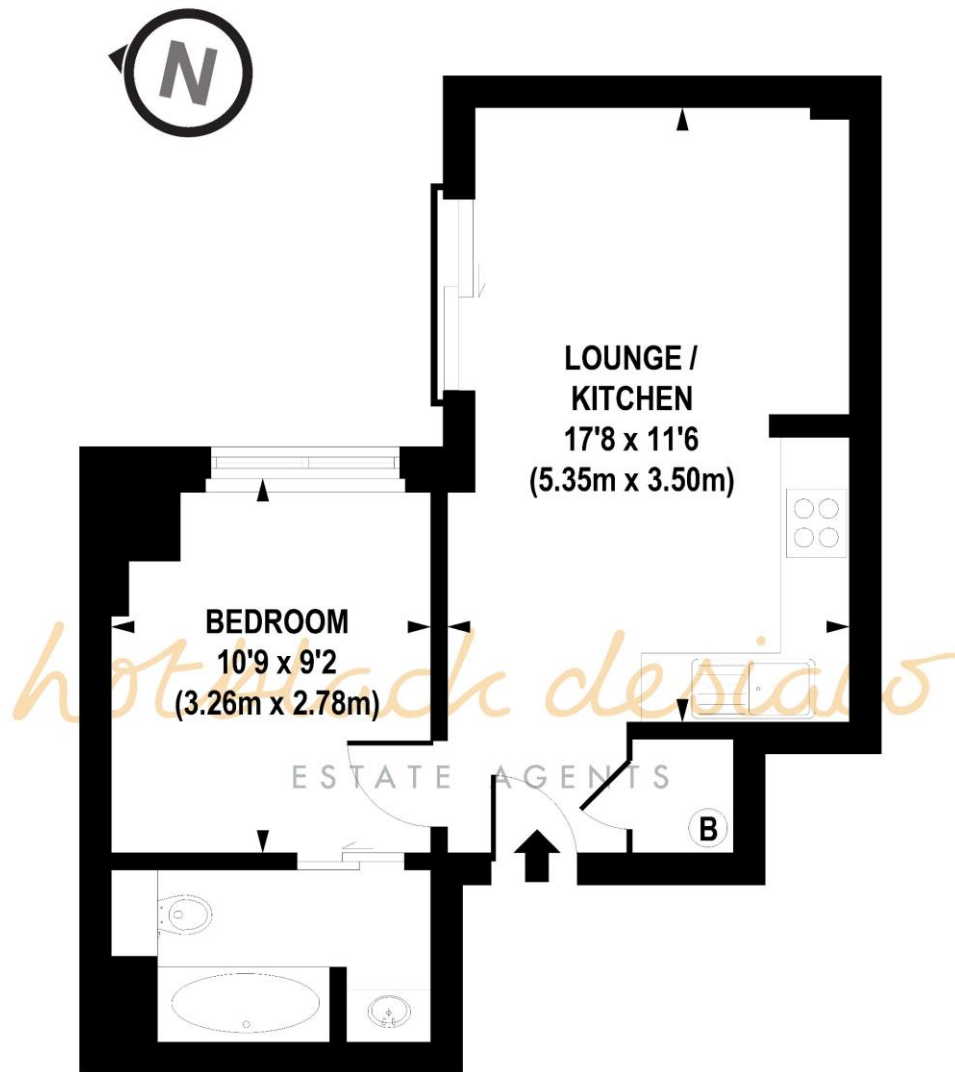
- Leasehold 137 years 5 months
- 1 Total Bedroom
- 1 Reception Room
- 1 Bathroom
- Flat/Apartment
- Upper Floor
- Modern



Flat 42, Terrace Apartments, 40 Drayton Park, Highbury,

Entrance to Terrace Apartments is via a smart entrance lobby where you can be greeted by the concierge before getting the lift to the third floor. There is an on-site gym and secure bike parking for all residents. The flat is very well presented in turnkey condition, offering convenient living and accommodation suiting a professional buyer.





THIRD FLOOR

APPROX. GROSS INTERNAL FLOOR AREA 396 sq. ft / 36.83 sq. m

Floorplan is for illustrative purposes only and is not to scale.
Every attempt has been made to ensure the accuracy of the floorplan shown, however all measurements, fixtures, fittings and data shown are an approximate interpretation for illustrative purposes only.
Liability for errors, omissions or mis-statement through negligence or otherwise is hereby excluded.

Whilst every attempt has been made to ensure the accuracy of the floor plans contained here, measurements of doors, windows and rooms are approximate and no responsibility is taken for any error, omission or mis-statement. These plans are for representation purposes only as defined by RICS Code of Measuring Practice and should be used as such by any prospective purchaser. The services, systems and appliances listed in this specification have not been tested and no guarantee as to their operating ability or their efficiency can be given.

