



## Highbury Park, London, N5 1TH

Offers Over: £800,000 Share of Freehold

**2 Total Bedrooms | 1 Reception Room | 2 Bathrooms**

A splendid two-bedroom, two-bathroom apartment located in a Grade II listed Georgian townhouse, in the heart of Highbury, with a private courtyard and no onward chain.

- Beautiful Georgian period property in the heart of Highbury
- Grade II listed
- Private Courtyard
- Private road with two resident's parking permits
- Share of freehold





## Highbury Park, London, N5 1TH

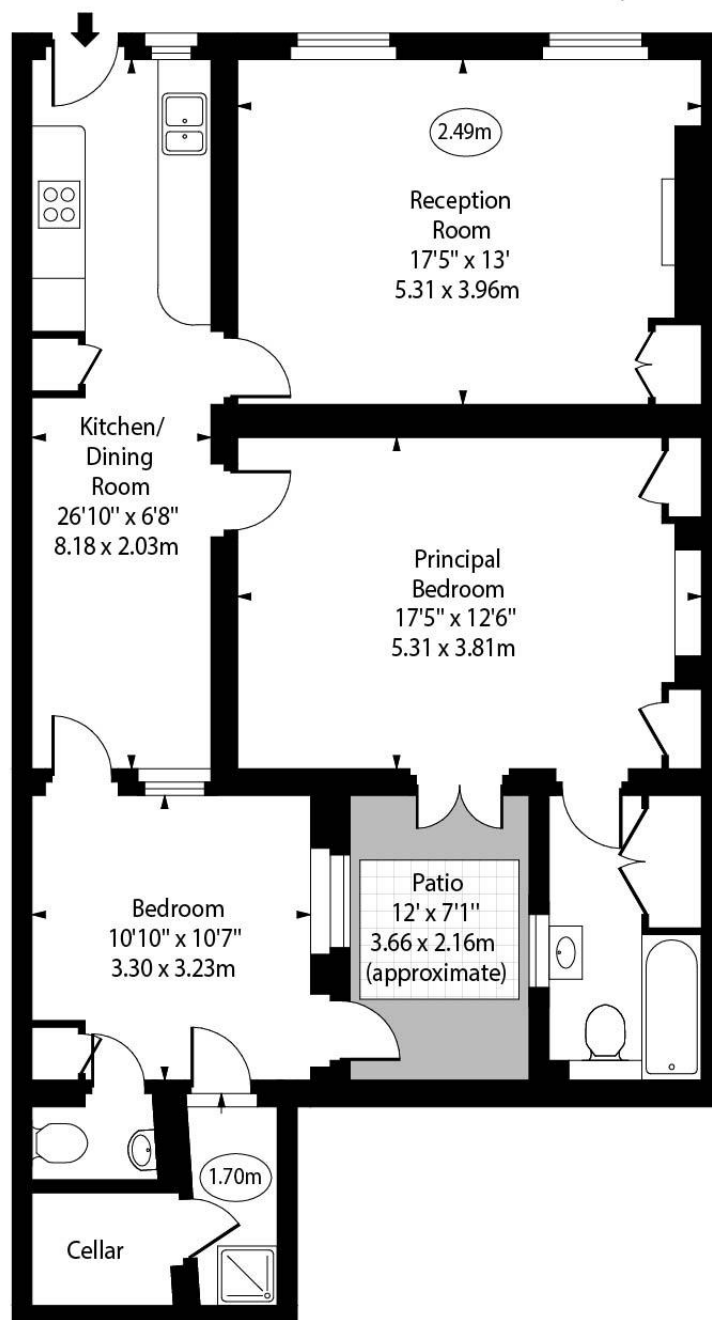
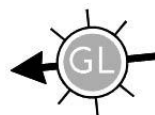
This splendid, two-bedroom, two-bathroom lower ground period property is located in a stunning Georgian terrace, set back off Highbury Park.

This share of freehold is presented beautifully throughout and is made up of a spacious reception room, a separate kitchen, two double bedrooms, two bathrooms and a charming courtyard garden



## Highbury Park, N5

○ - Ceiling Height



Lower Ground Floor

Approx Gross Internal Area 963 Sq Ft - 89.46 Sq M

Every attempt has been made to ensure the accuracy of the floor plan shown. However, all measurements, fixtures, fittings, and data shown are approximate interpretations and for illustrative purposes only.

Measured according to the RICS IPMS 2. Not To Scale.

[www.goldlens.co.uk](http://www.goldlens.co.uk)

Ref. No. 027798E

Whilst every attempt has been made to ensure the accuracy of the floor plans contained here, measurements of doors, windows and rooms are approximate and no responsibility is taken for any error, omission or mis-statement. These plans are for representation purposes only as defined by RICS Code of Measuring Practice and should be used as such by any prospective purchaser. The services, systems and appliances listed in this specification have not been tested and no guarantee as to their operating ability or their efficiency can be given.

